



FITTING INSTRUCTIONS FOR CP0210
CRASH PROTECTORS



THIS KIT CONTAINS THE ITEMS PICTURED AND LABELLED OVER PAGE.

SOME PARTS MAY BE SHOWN FOR CLARITY OF INSTRUCTIONS ONLY.

DO NOT PROCEED UNTIL YOU ARE SURE ALL PARTS ARE PRESENT.

PLEASE READ ALL INSTRUCTIONS BEFORE PROCEEDING.

**IF IN ANY DOUBT WHEN FITTING OUR PRODUCTS, CONSULT ONE OF OUR DEALERS OR
HAVE FITTED BY A QUALIFIED TECHNICIAN.**

PLEASE NOTE THAT THE WAY THE KIT IS PACKED DOES NOT NECESSARILY REPRESENT THE WAY OF
MOUNTING TO THE BIKE.

IN THE EVENT OF RUBBER WASHERS BEING USED TO HOLD COMPONENTS ONTO BOLTS,
THESE RUBBER WASHERS CAN BE THROWN AWAY.

DIGITAL COPIES OF THESE INSTRUCTIONS ARE AVAILABLE TO DOWNLOAD FROM

WWW.RG-RACING.COM

R&G

Unit 1, Shelley's Lane, East Worldham, Alton, Hampshire, GU34 3AQ

Tel: +44 (0)1420 89007 Fax: +44 (0)1420 87301 www.rg-racing.com Email: info@rg-racing.com

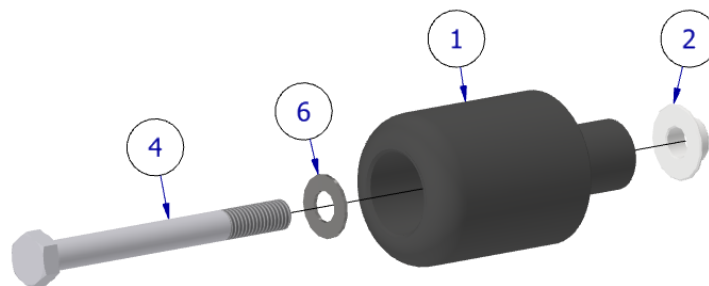


<u>TOOLS REQUIRED</u>	<u>GENERAL TORQUE SETTINGS</u>
<ul style="list-style-type: none"> • SET OF METRIC HEX BITS • 3/8" OR 1/2" RATCHET • 17mm AND 19mm SOCKET • TORQUE WRENCH CAPABLE OF 40Nm. • SUITABLE JACK WITH SOFT SUPPORT AREA (TO SUPPORT ENGINE WHILE MOUNTING BOLTS REMOVED). 	<p>M4 BOLT = 8Nm</p> <p>M5 BOLT = 12Nm</p> <p>M6 BOLT = 15Nm</p> <p>M8 BOLT = 20Nm</p> <p>M10 BOLT = 40Nm</p> <p>M12 BOLT = 40Nm</p>

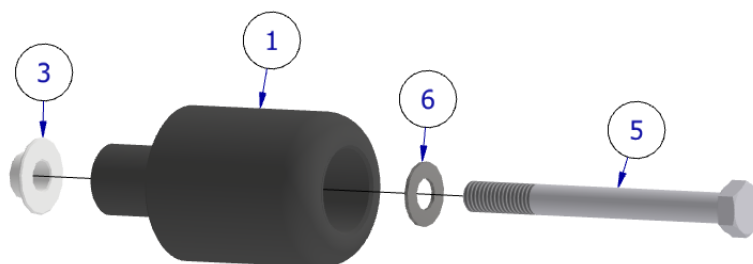
LEGEND

ITEM NO.	DESCRIPTION	QTY
ITEM 1	B0003 WITH CS005 (BOBBIN)	2
ITEM 2	S0236 (LHS SPACER) (8mm LONG)	1
ITEM 3	S0237 (RHS SPACER) (6.5mm LONG)	1
ITEM 4	M10 x 1.25 x 100mm HEX HEAD BOLT (LHS BOBBIN BOLT)	1
ITEM 5	M10 x 1.25 x 110mm HEX HEAD BOLT (LHS BOBBIN BOLT)	1
ITEM 6	M10 WASHER	2

ASSEMBLY DIAGRAM – LHS



ASSEMBLY DIAGRAM – RHS



R&G



FITTING PICTURE



Picture 1



FITTING INSTRUCTIONS

PLEASE NOTE THAT BEFORE BEGINNING, YOU WILL NEED A SUITABLE JACK TO SUPPORT THE ENGINE WHEN REMOVING OEM ENGINE BOLTS. IF YOU ARE NOT COMFORTABLE CARRYING OUT THIS PROCEDURE, HAVE FITTED BY A QUALIFIED TECHNICIAN. READ ALL STEPS BEFORE PROCEEDING.

- Place the jack underneath the engine in a central position and apply a light pressure to the underside of the engine **NOT** the exhaust or any other tubing (Please use a semi soft material (rubber/wood etc) as a bumper between the jack support area & the engine to cushion/spread the load which will prevent any damage to the under-side of the engine).
- As shown in **Picture 1** please remove the LHS OEM engine bolt.
- Construct the LHS assembly as shown above in **ASSEMBLY DIAGRAM – LHS**.
- Attach the LHS assembly using the M10 x 1.25 x 100mm bolt provided (**Item 4**), tightening to the torque spec noted above.
- Repeat the steps above for the RHS OEM engine bolt and attach using the M10 x 1.25 x 110mm bolt (**Item 5**), tightening to the torque spec noted above.

See more R&G products for your Motorcycle in the link below:

[R&G Racing | All Products for Yamaha - FZR400RR \(All Years\) \(rg-racing.com\)](http://rg-racing.com)

ISSUE 1 - 19/12/2022 (AO)

CONSUMER NOTICE

The catalogue description and any exhibition of samples are only broad indications of the Products and R&G may make design changes which do not diminish their performance or visual appeal and supplying them in such state shall conform to the order. The Buyer acknowledges no representation or warranty (other than as to title) has been given or will apply to the Products other than those in R&G's order or confirmation and the Buyer confirms it has chosen the Products as being of merchantable quality and suitable for its particular purposes. Where R&G fits the Products or undertakes other services it shall exercise reasonable skill and care and rectify any fault free of charge unless the workmanship has been disturbed. The Buyer is responsible for ensuring that the warranty on the motorcycle is not affected by the fitting of the Products. On return of any defective Products R&G shall at its option either supply a replacement or refund the purchase money but shall not be liable if the Products have been modified or used or maintained otherwise than in accordance with R&G's or manufacturer's instructions and good engineering practice or if the defect arises from accident or neglect. Other than identified above and subject to R&G not limiting its liability for causing death and personal injury, it shall not be liable for indirect or consequential loss and otherwise its liability shall be limited to the amounts paid by the Buyer for the Products or the fitting or service concerned. These terms do not affect the Buyer's statutory rights.

R&G RETURNS POLICY (NON-FAULTY GOODS)

Returns must be pre-authorized (if not pre-authorized the return will be rejected). Goods may only be returned direct to us if they were purchased direct from us (customer must prove if necessary). Otherwise to be returned to original vendor. Goods must be in re-sellable condition, in the opinion of R&G. All returns are subject to a 25% restocking and handling fee (25% of the gross value exc. P&P – at the prevailing price at time of purchase). The customer must pay any and all carriage charges. No returns of discontinued products, unless within 14 days of purchase. This policy does not affect your statutory rights and does not refer to faulty goods.

R&G

Unit 1, Shelley's Lane, East Worldham, Alton, Hampshire, GU34 3AQ

Tel: +44 (0)1420 89007 Fax: +44 (0)1420 87301 www.rg-racing.com Email: info@rg-racing.com



NOTICE DE MONTAGE POUR CP0210
PROTECTIONS CRASH



CE KIT CONTIENT LES ARTICLES ILLUSTRÉS ET ÉTIQUETES SUR LA PAGE.

CERTAINES PARTIES PEUVENT ÊTRE PRÉSENTES UNIQUEMENT POUR LA CLARTÉ DES INSTRUCTIONS.

NE PAS PROCÉDER AU MONTAGE TANT QUE VOUS N'ÊTES PAS SÛR QUE TOUTES LES PIÈCES SOIENT PRÉSENTES.

VEUILLEZ LIRE TOUTES LES INSTRUCTIONS AVANT DE CONTINUER.

**EN CAS DE DOUTE LORS DU MONTAGE DE NOS PRODUITS, CONSULTEZ UN DE NOS
REVENDEURS OU FAITES APPEL À UN TECHNICIEN QUALIFIÉ.**

VEUILLEZ NOTER QUE LA FAÇON DONT LE KIT EST EMBALLÉ NE REPRÉSENTE PAS NECESSAIREMENT LA
MANIÈRE DE LE MONTER SUR LA MOTO.

SI DES RONDELLES EN CAOUTCHOUC SONT UTILISÉES POUR MAINTENIR LES COMPOSANTS SUR LES
BOULONS, ELLES PEUVENT ÊTRE JETÉES.

NOTICE DISPONIBLE AU TÉLÉCHARGEMENT SUR :
WWW.RG-RACING.COM

R&G

Unit 1, Shelley's Lane, East Worldham, Alton, Hampshire, GU34 3AQ
Tel: +44 (0)1420 89007 Fax: +44 (0)1420 87301 www.rg-racing.com Email: info@rg-racing.com

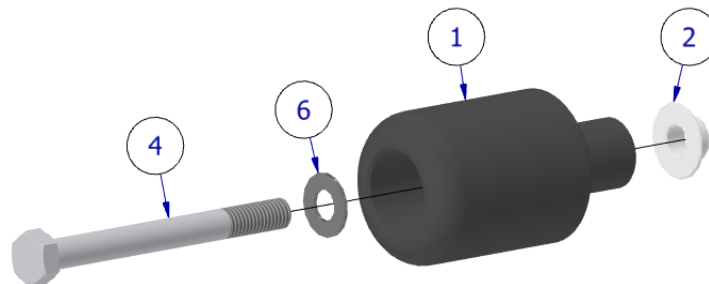


<u>TOOLS REQUIRED</u>	<u>GENERAL TORQUE SETTINGS</u>
<ul style="list-style-type: none"> • CLÉS MÉTRIQUES • CLE À CLIQUET + DOUILLES 3/8" OU 1/2" • CLÉ À CLIQUET + DOUILLES 17mm ET 19mm • CLÉ DYNAMOMÉTRIQUE 40Nm. • PRISE ADAPTÉE POUR SUPPORTER LE MOTEUR DURANT LE MONTAGE (POUR SUPPORT LE MOTEUR TOUT EN ENLEVANT LES BOULONS DE FIXATION). 	<ul style="list-style-type: none"> • M4 BOLT = 8Nm • M5 BOLT = 12Nm • M6 BOLT = 15Nm • M8 BOLT = 20Nm • M10 BOLT = 40Nm • M12 BOLT = 40Nm

LÉGENDE

ARTICLE NO.	DESCRIPTION	QTÉ
ARTICLE 1	B0003 AVEC CS005 (BOBINE)	2
ARTICLE 2	S0236 (ENTRETOISE CÔTÉ GAUCHE) (8mm DE LONG)	1
ARTICLE 3	S0237 (ENTRETOISE CÔTÉ DROIT) (6.5mm DE LONG)	1
ARTICLE 4	M10 x 1.25 x 100mm BOULON (BOULON DE PROTECTION CÔTÉ GAUCHE)	1
ARTICLE 5	M10 x 1.25 x 110mm BOULON (BOULON DE PROTECTION CÔTÉ DROIT)	1
ARTICLE 6	M10 RONDELLE	2

SCHÉMA D'ENSEMBLE – CÔTÉ GAUCHE



R&G

Unit 1, Shelley's Lane, East Worldham, Alton, Hampshire, GU34 3AQ

Tel: +44 (0)1420 89007 Fax: +44 (0)1420 87301 www.rg-racing.com Email: info@rg-racing.com



SCHÉMA D'ENSEMBLE - CÔTÉ DROIT

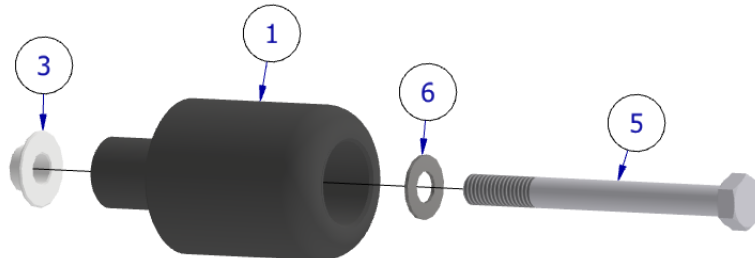


PHOTO DE MONTAGE



Photo 1



NOTICE DE MONTAGE

VEUILLEZ NOTER QU'AVANT DE COMMENCER, VOUS AUREZ BESOIN D'UN CRIC APPROPRIÉ POUR SOUTENIR LE MOTEUR LORS DU DÉMONTAGE DES BOULONS DE MOTEUR D'ORIGINE. SI VOUS N'ÊTES PAS À L'AISE, FAITES L'INSTALLATION PAR UN TECHNICIEN QUALIFIÉ. LISEZ TOUTES LES ÉTAPES AVANT DE CONTINUER.

- Placez le cric sous le moteur dans une position centrale et appliquez une légère pression sur le dessous du moteur PAS sur l'échappement ou tout autre partie de la moto (veuillez utiliser un matériau semi-souple (caoutchouc/bois, etc.) comme protection entre la zone de support du cric & le moteur pour amortir/répartir la charge ce qui évitera tout dommage au-dessous du moteur).
- Comme indiqué sur l'image 1, veuillez retirer le boulon du moteur d'origine côté gauche.
- Construisez l'ensemble côté gauche comme indiqué ci-dessus sur le SCHÉMA D'ASSEMBLAGE – CÔTÉ GAUCHE
- Fixez l'ensemble côté gauche à l'aide du boulon M10 x 1,25 x 100 mm fourni (article 4), en serrant au couple indiqué ci-dessus.
- Répétez les étapes ci-dessus pour le boulon du moteur d'origine côté droit et fixez-le à l'aide du boulon M10 x 1,25 x 110 mm (article 5), en serrant au couple spécifié ci-dessus.

Voir plus de produits R&G pour votre moto via ce lien :
[R&G Racing | All Products for Yamaha - FZR400RR \(All Years\) \(rg-racing.com\)](http://www.rg-racing.com)

ISSUE 1 - 19/12/2022 (AO)

CONSUMER NOTICE

The catalogue description and any exhibition of samples are only broad indications of the Products and R&G may make design changes which do not diminish their performance or visual appeal and supplying them in such state shall conform to the order. The Buyer acknowledges no representation or warranty (other than as to title) has been given or will apply to the Products other than those in R&G's order or confirmation and the Buyer confirms it has chosen the Products as being of merchantable quality and suitable for its particular purposes. Where R&G fits the Products or undertakes other services it shall exercise reasonable skill and care and rectify any fault free of charge unless the workmanship has been disturbed. The Buyer is responsible for ensuring that the warranty on the motorcycle is not affected by the fitting of the Products. On return of any defective Products R&G shall at its option either supply a replacement or refund the purchase money but shall not be liable if the Products have been modified or used or maintained otherwise than in accordance with R&G's or manufacturer's instructions and good engineering practice or if the defect arises from accident or neglect. Other than identified above and subject to R&G not limiting its liability for causing death and personal injury, it shall not be liable for indirect or consequential loss and otherwise its liability shall be limited to the amounts paid by the Buyer for the Products or the fitting or service concerned. These terms do not affect the Buyer's statutory rights.

R&G RETURNS POLICY (NON-FAULTY GOODS)

Returns must be pre-authorized (if not pre-authorized the return will be rejected). Goods may only be returned direct to us if they were purchased direct from us (customer must prove if necessary). Otherwise to be returned to original vendor. Goods must be in re-sellable condition, in the opinion of R&G. All returns are subject to a 25% restocking and handling fee (25% of the gross value exc. P&P – at the prevailing price at time of purchase). The customer must pay any and all carriage charges. No returns of discontinued products, unless within 14 days of purchase. This policy does not affect your statutory rights and does not refer to faulty goods.

R&G

Unit 1, Shelley's Lane, East Worldham, Alton, Hampshire, GU34 3AQ

Tel: +44 (0)1420 89007 Fax: +44 (0)1420 87301 www.rg-racing.com Email: info@rg-racing.com