



FITTING INSTRUCTIONS FOR CP0520 AERO CRASH PROTECTORS
YAMAHA MT-125 2020-



THIS KIT CONTAINS THE ITEMS PICTURED AND LABELLED OVER PAGE.

SOME PARTS MAY BE SHOWN FOR CLARITY OF INSTRUCTIONS ONLY.

DO NOT PROCEED UNTIL YOU ARE SURE ALL PARTS ARE PRESENT.

PLEASE READ ALL INSTRUCTIONS BEFORE PROCEEDING.

**IF IN ANY DOUBT WHEN FITTING OUR PRODUCTS, CONSULT ONE OF OUR DEALERS
OR HAVE FITTED BY A QUALIFIED TECHNICIAN.**

PLEASE NOTE THAT THE WAY THE KIT IS PACKED DOES NOT NECESSARILY REPRESENT THE WAY OF
MOUNTING TO THE BIKE.

IN THE EVENT OF RUBBER WASHERS BEING USED TO HOLD COMPONENTS ONTO BOLTS,
THESE RUBBER WASHERS CAN BE THROWN AWAY.

DIGITAL COPIES OF THESE INSTRUCTIONS ARE AVAILABLE FROM:

WWW.RG-RACING.COM



<u>TOOLS REQUIRED</u>	<u>GENERAL TORQUE SETTINGS</u>
<ul style="list-style-type: none"> • SOCKET & WRENCH SET INCLUDING 15mm and 17mm SOCKETS. • TORQUE WRENCH (UP TO 50Nm) • SUITABLE SUPPORT JACK 	<p>M4 BOLT = 8Nm M5 BOLT = 12Nm M6 BOLT = 15Nm M8 BOLT = 20Nm M10 BOLT = 40Nm M12 BOLT = 40Nm</p>

LEGEND

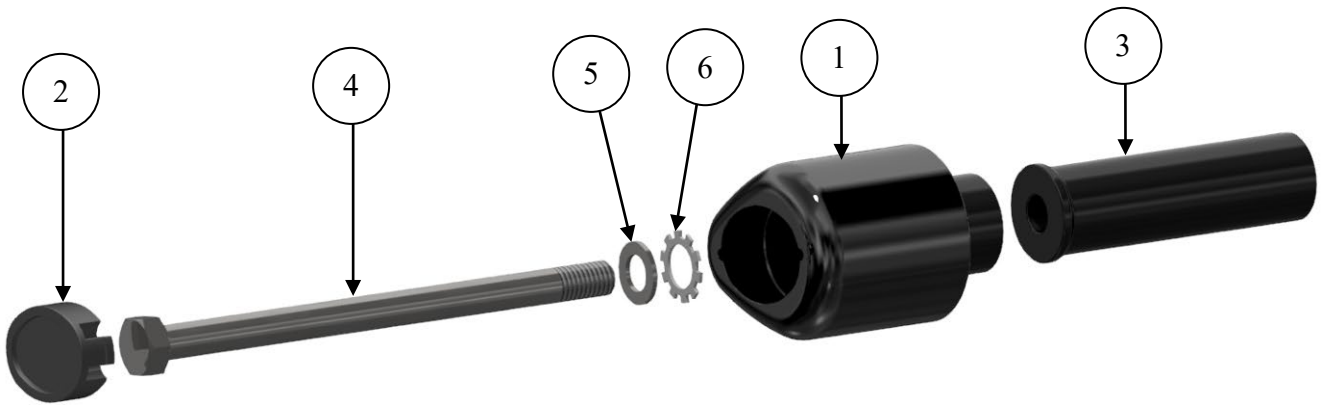
ITEM NO.	DESCRIPTION	QTY
ITEM 1	B0431 AERO BOBBINS	2
ITEM 2	BC0002 BOBBIN CAPS (BOTH SIDES)	2
ITEM 3	S0689 TWO Ø SPACER 85mm LONG (BLACK)	2
ITEM 4	M10x1.25x150 HEX HEAD BOLT	2
ITEM 5	M10x19mm O/D PENNY WASHER (BOTH SIDES)	2
ITEM 6	LW0001 LOCKING WASHERS (BOTH SIDES)	2

AERO-STYLE CRASH PROTECTOR ORIENTATION





LHS & RHS EXPLODED ASSEMBLY VIEW



FITTING PICTURES



Picture 1



Picture 2



Picture 3



FITTING INSTRUCTIONS

Before removing engine bolts, ensure the bike is upright and supported by a suitable engine stand or jack placed under the sump of the motorbike to support the partial weight of the engine, this will prevent the engine from moving during fitting. DO NOT REMOVE MORE THAN 1 ENGINE BOLT AT ANY TIME.

PREPARATION:

- Place a suitable jack beneath the engine in a central position using a piece of wood or plastic between the jack and engine.
- Apply very light pressure to the underside of the engine to support the engine during the fitment process.

Assemble the crash protectors before removing the engine bolts to limit the amount of time the engine is partially un-supported.

- Place one of the penny washers (**ITEM 5**) over the bolt (**ITEM 4**) followed by the shake proof washer (**ITEM 6**).
- Insert the 150mm bolt (**ITEM 4**) with washers into the aero bobbin (**ITEM 1**) followed by the 85mm long spacer (**ITEM 3**) as shown in **Picture 2**.

INSTALLATION:

- Remove the OEM engine mounting bolt shown in **Picture 1**.
- Install the bobbin and bolt assembly pre-prepared into the engine mount. Screw the M10x150mm bolt into the thread which will hold the assembly in position.
NOTE: To avoid cross threading apply forward pressure to the bolt and rotate counter-clockwise until a click is heard then begin to turn clockwise & tighten.
- Using a torque wrench with 17mm socket fitted, tighten the bolt to 45 Nm. You may need to hold the bobbin in position to prevent it turning while tightening the bolt.
- Repeat the same process for the other side, ensuring that the bobbin faces the correct way.
- Once completed, double check torque settings & the position/orientation of the bobbins then push the bobbin caps (**ITEM2**) into place then remove the jack.

ISSUE 1 - 29/07/2021 (WW)

CONSUMER NOTICE

The catalogue description and any exhibition of samples are only broad indications of the Products and R&G may make design changes which do not diminish their performance or visual appeal and supplying them in such state shall conform to the order. The Buyer acknowledges no representation or warranty (other than as to title) has been given or will apply to the Products other than those in R&G's order or confirmation and the Buyer confirms it has chosen the Products as being of merchantable quality and suitable for its particular purposes. Where R&G fits the Products or undertakes other services it shall exercise reasonable skill and care and rectify any fault free of charge unless the workmanship has been disturbed. The Buyer is responsible for ensuring that the warranty on the motorcycle is not affected by the fitting of the Products. On return of any defective Products R&G shall at its option either supply a replacement or refund the purchase money but shall not be liable if the Products have been modified or used or maintained otherwise than in accordance with R&G's or manufacturer's instructions and good engineering practice or if the defect arises from accident or neglect. Other than identified above and subject to R&G not limiting its liability for causing death and personal injury, it shall not be liable for indirect or consequential loss and otherwise its liability shall be limited to the amounts paid by the Buyer for the Products or the fitting or service concerned. These terms do not affect the Buyer's statutory rights.

R&G Racing

Unit 1, Shelley's Lane, East Worldham, Alton, Hampshire, GU34 3AQ

Tel: +44 (0)1420 89007 Fax: +44 (0)1420 87301 www.rg-racing.com Email: info@rg-racing.com

**R&G RACING RETURNS POLICY (NON-FAULTY GOODS)**

Returns must be pre-authorized (if not pre-authorized the return will be rejected). Goods may only be returned direct to us if they were purchased direct from us (customer must prove if necessary). Otherwise to be returned to original vendor. Goods must be in re-sellable condition, in the opinion of R&G Racing. All returns are subject to a 25% restocking and handling fee (25% of the gross value exc. P&P – at the prevailing price at time of purchase). The customer must pay any and all carriage charges. No returns of discontinued products, unless within 14 days of purchase. This policy does not affect your statutory rights and does not refer to faulty goods.

R&G Racing

Unit 1, Shelley's Lane, East Worldham, Alton, Hampshire, GU34 3AQ

Tel: +44 (0)1420 89007 Fax: +44 (0)1420 87301 www.rg-racing.com Email: info@rg-racing.com



NOTICE DE MONTAGE POUR CP0520 PROTECTIONS CRASH
YAMAHA MT-125 2020-



CE KIT CONTIENT LES ARTICLES ILLUSTRÉS ET ÉTIQUETÉS SUR LA PAGE.

CERTAINES PARTIES PEUVENT ÊTRE PRÉSENTES UNIQUEMENT POUR LA CLARTÉ DES INSTRUCTIONS.

NE PAS PROCÉDER AU MONTAGE TANT QUE VOUS N'ÊTES PAS SÛR QUE TOUTES LES PIÈCES SOIENT PRÉSENTES.

VEUILLEZ LIRE TOUTES LES INSTRUCTIONS AVANT DE CONTINUER.

EN CAS DE DOUTE LORS DU MONTAGE DE NOS PRODUITS, CONSULTEZ UN DE NOS REVENDEURS OU FAITES APPEL À UN TECHNICIEN QUALIFIÉ.

VEUILLEZ NOTER QUE LA FAÇON DONT LE KIT EST EMBALLÉ NE REPRÉSENTE PAS NECESSAIREMENT LA MANIÈRE DE LE MONTER SUR LA MOTO.

SI DES RONDELLES EN CAOUTCHOUC SONT UTILISÉES POUR MAINTENIR LES COMPOSANTS SUR LES BOULONS, ELLES PEUVENT ÊTRE JETÉES.

NOTICE DISPONIBLE AU TÉLÉCHARGEMENT SUR : WWW.RG-RACING.COM



<u>OUTILS REQUIS</u>	<u>VALEURS DE SERRAGE</u>
<ul style="list-style-type: none"> • CLÉ À CLIQUET + DOUILLES 15mm et 17mm. • CLÉ DYNAMOMÉTRIQUE (À 50Nm) • PRISE/SANGLE ADAPTÉE 	M4 BOULON = 8Nm M5 BOULON = 12Nm M6 BOULON = 15Nm M8 BOULON = 20Nm M10 BOULON = 40Nm M12 BOULON = 40Nm

LÉGENDE

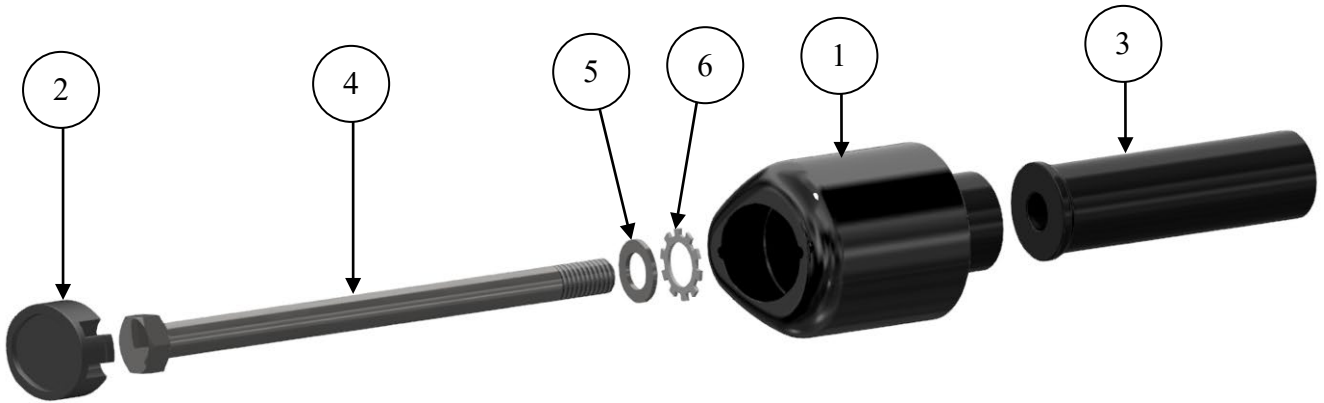
ARTICLE NO.	DESCRIPTION	QTÉ
ARTICLE 1	B0431 BOBINES	2
ARTICLE 2	BC0002 CAPUCHONS DE BOBINE (DES 2 CÔTÉS)	2
ARTICLE 3	S0689 2 ENTRETOISES 85mm DE LONG (NOIR)	2
ARTICLE 4	M10x1.25x150 BOULONS	2
ARTICLE 5	M10x19mm O/D RONDELLES (DES 2 CÔTÉS)	2
ARTICLE 6	LW0001 RONDELLES DE BLOCAGE (DES 2 CÔTÉS)	2

ORIENTATION DE LA PROTECTION CRASH





SCHÉMA D'ENSEMBLE CÔTÉ GAUCHE ET DROIT



PHOTOS DE MONTAGE



Photo 1

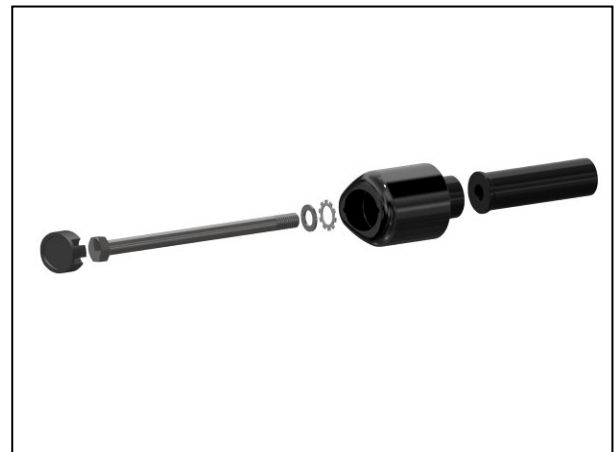


Photo 2



Photo 3



NOTICE DE MONTAGE

Avant de retirer les boulons du moteur, assurez-vous que la moto soit bien droite et soutenue par un support moteur ou un cric approprié placé sous le carter de la moto pour supporter le poids partiel du moteur, cela empêchera le moteur de bouger pendant le montage. NE PAS ENLEVER PLUS D'1 BOULON DE MOTEUR EN MÊME TEMPS.

PRÉPARATION:

- Placez un cric approprié sous le moteur dans une position centrale en utilisant un morceau de bois ou de plastique entre le cric et le moteur.
- Appliquez une très légère pression sur le dessous du moteur pour soutenir le moteur pendant le processus de montage.
Assemblez les protections crash avant de retirer les boulons du moteur pour limiter la durée pendant laquelle le moteur est partiellement non soutenu.
- Placer une des rondelles (ARTICLE 5) sur le boulon (ARTICLE 4) suivie de la rondelle anti-vibration (ARTICLE 6).
- Insérez le boulon de 150 mm (ARTICLE 4) avec des rondelles dans la bobine aérodynamique (ARTICLE 1) suivi de l'entretoise de 85 mm de long (ARTICLE 3) comme indiqué sur la photo 2.

INSTALLATION:

- Retirez le boulon de fixation du moteur d'origine illustré sur la photo 1.
- Installez l'ensemble de la bobine et le boulon préalablement préparé dans le support du moteur. Vissez le boulon M10x150mm dans le filetage qui maintiendra l'ensemble en position.
REMARQUE: Pour éviter un filetage croisé, appliquez une pression vers l'avant sur le boulon et tournez dans le sens inverse des aiguilles d'une montre jusqu'à ce qu'un clic se fasse entendre, puis commencez à tourner dans le sens des aiguilles d'une montre et serrez.
- À l'aide d'une clé dynamométrique munie d'une douille de 17 mm, serrez le boulon à 45 Nm. Vous devrez peut-être maintenir la protection en position pour l'empêcher de tourner pendant le serrage du boulon.
- Répétez le même processus de l'autre côté, en vous assurant que la bobine soit orientée dans le bon sens.
- Une fois terminé, vérifiez les réglages de couple et la position/orientation des bobines, puis poussez les capuchons des protections (ARTICLE2) en place, puis retirez le cric.

ISSUE 1 - 29/07/2021 (WW)

CONSUMER NOTICE

The catalogue description and any exhibition of samples are only broad indications of the Products and R&G may make design changes which do not diminish their performance or visual appeal and supplying them in such state shall conform to the order. The Buyer acknowledges no representation or warranty (other than as to title) has been given or will apply to the Products other than those in R&G's order or confirmation and the Buyer confirms it has chosen the Products as being of merchantable quality and suitable for its particular purposes. Where R&G fits the Products or undertakes other services it shall exercise reasonable skill and care and rectify any fault free of charge unless the workmanship has been disturbed. The Buyer is responsible for ensuring that the warranty on the motorcycle is not affected by the fitting of the Products. On return of any defective Products R&G shall at its option either supply a replacement or refund the purchase money but shall not be liable if the Products have been modified or used or maintained otherwise than in accordance with R&G's or manufacturer's instructions and good engineering practice or if the defect arises from accident or neglect. Other than identified above and subject to R&G not limiting its liability for causing death and personal injury, it shall not be liable for indirect or consequential

R&G Racing

Unit 1, Shelley's Lane, East Worldham, Alton, Hampshire, GU34 3AQ

Tel: +44 (0)1420 89007 Fax: +44 (0)1420 87301 www.rg-racing.com Email: info@rg-racing.com



loss and otherwise its liability shall be limited to the amounts paid by the Buyer for the Products or the fitting or service concerned. These terms do not affect the Buyer's statutory rights.

R&G RACING RETURNS POLICY (NON-FAULTY GOODS)

Returns must be pre-authorized (if not pre-authorized the return will be rejected). Goods may only be returned direct to us if they were purchased direct from us (customer must prove if necessary). Otherwise to be returned to original vendor. Goods must be in re-sellable condition, in the opinion of R&G Racing. All returns are subject to a 25% restocking and handling fee (25% of the gross value exc. P&P – at the prevailing price at time of purchase). The customer must pay any and all carriage charges. No returns of discontinued products, unless within 14 days of purchase. This policy does not affect your statutory rights and does not refer to faulty goods.

R&G Racing

Unit 1, Shelley's Lane, East Worldham, Alton, Hampshire, GU34 3AQ

Tel: +44 (0)1420 89007 Fax: +44 (0)1420 87301 www.rg-racing.com Email: info@rg-racing.com



MONTAGEANLEITUNG FÜR CP0520 AERO STURZPADS
YAMAHA MT-125 2020-



ALLE KIT-TEILE SIND AUF DEN NACHFOLGENDEN SEITEN ABGEBILDET UND GEKENNZEICHNET.

DIE ABGEBILDETEN TEILE DIENEN LEDIGLICH ZUR ERKLÄRUNG.

ÜBERPRÜFEN SIE ZUERST, DASS ALLE TEILE VORHANDEN SIND.

LESEN SIE DIE MONTAGEANLEITUNG KOMPLETT DURCH, BEVOR SIE ANFANGEN.

WENN SIE BEI DER MONTAGE DIESES PRODUKTES UNSICHER SIND, BITTE EINEN UNSERER HÄNDLER KONTAKTIEREN ODER DAS KIT VON EINEM QUALIFIZIERTEN ZWEIRAD-MECHANIKER MONTIEREN LASSEN.

DIE VERPACKUNG DER TEILE STELLT NICHT DIE REIHENFOLGE DER MONTAGE DAR.

HINWEIS FÜR KITS MIT PLASTIKUNTERLEGSCHLEIBEN AN DEN SCHRAUBEN –
DIESE PLASTIK-UNTERLEGSCHLEIBEN WERDEN NICHT FÜR DEN EINBAU BENÖTIGT!

EINE DIGITALE VERSION DIESER MONTAGEANLEITUNG KANN AUF FOLGENDER SEITE HERUNTERGELADEN WERDEN:

[WWW.RG-RACING.COM](http://www.rg-racing.com)

R&G Racing

Unit 1, Shelley's Lane, East Worldham, Alton, Hampshire, GU34 3AQ

Tel: +44 (0)1420 89007 Fax: +44 (0)1420 87301 www.rg-racing.com Email: info@rg-racing.com



<u>SIE BENÖTIGEN FOLGENDES WERKZEUG</u>	<u>ALLGEM. ANZUGSDREHMOMENT</u>
<ul style="list-style-type: none"> SATZ STECKSCHLÜSSEL INKL. 15mm und 17mm STECKSCHLÜSSEL DREHMOMENTSCHLÜSSEL (BIS 50Nm) MONTAGESTÄNDER / HEBER 	M4 SCHRAUBE = 8Nm M5 SCHRAUBE = 12Nm M6 SCHRAUBE = 15Nm M8 SCHRAUBE = 20Nm M10 SCHRAUBE = 40Nm M12 SCHRAUBE = 40Nm

LIEFERUMFANG

ARTIKEL NR.	BESCHREIBUNG	MENGE
ARTIKEL 1	B0431 AERO STURZPADS	2
ARTIKEL 2	BC0002 STURZPAD-KAPPEN (BEIDE SEITEN)	2
ARTIKEL 3	S0689 ZWEI Ø DISTANZHALTER 85mm LÄNGE (SCHWARZ)	2
ARTIKEL 4	M10x1.25x150 SECHSKANTSCHRAUBE	2
ARTIKEL 5	M10x19mm O/D UNTERLEGSCHEIBE (BEIDE SEITEN)	2
ARTIKEL 6	LW0001 ZAHNSCHEIBE (BEIDE SEITEN)	2

AERO-STYLE STURZPAD - ORIENTIERUNG

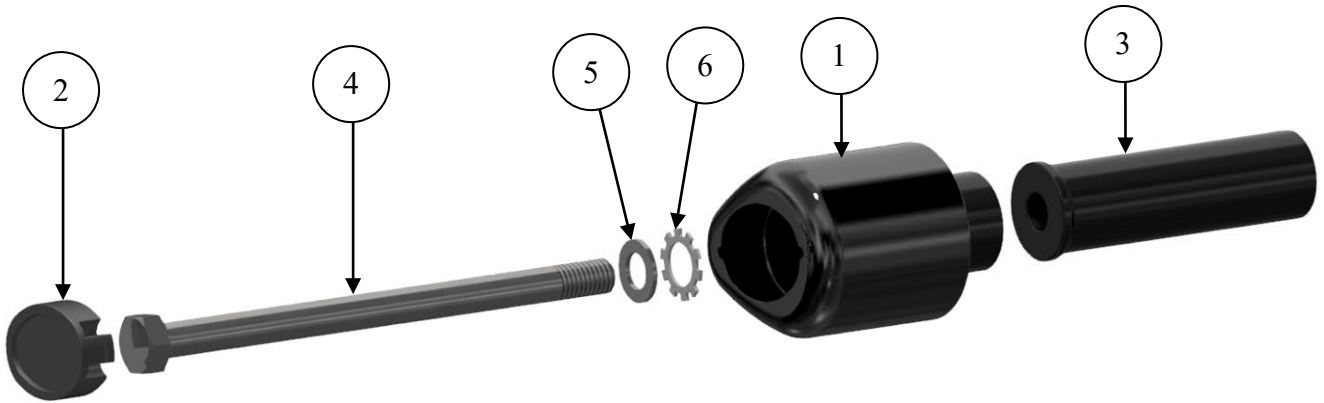


LINKE SEITE & RECHTE SEITE EXPLOSIONSZEICHUNG

R&G Racing

Unit 1, Shelley's Lane, East Worldham, Alton, Hampshire, GU34 3AQ

Tel: +44 (0)1420 89007 Fax: +44 (0)1420 87301 www.rg-racing.com Email: info@rg-racing.com



MONTAGE ABILDUNGEN



Abbildung 1

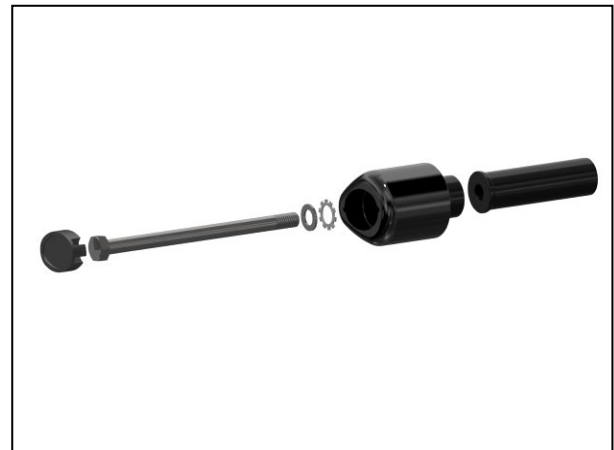


Abbildung 2



Abbildung 3



MONTAGEANLEITUNG

Bevor Sie die Schrauben für den Motor entfernen, stellen Sie sicher, dass das Motorrad aufrecht steht und der Motor mit einem geeigneten Ständer/Heber unterhalb der Ölwanne gestützt wird. Dies verhindert, dass der Motor sich bei der Entfernung von Motorschrauben bewegt. WÄHREND DER INSTALLATION DÜRFEN DIE SCHRAUBEN FÜR DEN MOTOR NUR EINZELN UND NIE GLEICHZEITIG ENTFERNT WERDEN.

VORBEREITUNG:

- Einen passenden Motorradheber oder Montageständer mittig unter den Motor stellen mit einem Stück Holz oder Kunststoff zwischen dem Motor und dem Ständer.
- Ein kleines bisschen Druck an der Unterseite des Motors anwenden, um den Motor während der Montage zu stützen

Die Sturz pads zusammenbauen, bevor Sie die Motorschrauben entfernen, sodass der Motor nur für eine kurze Zeit nicht vollständig gestützt ist.

- Eine Unterlegscheibe (**ARTIKEL 5**) gefolgt von einer Zahnscheibe (**ARTIKEL 6**) an der Schraube (**ARTIKEL 4**) anbringen.
- Die 150mm Schraube (**ARTIKEL 4**) mit den Unterlegscheiben gefolgt vom 85 mm Distanzhalter (**ARTIKEL 3**) in das Sturzpad (**ARTIKEL 1**) einführen wie in **Abbildung 2** abgebildet.

MONTAGE:

- Entfernen Sie die Motorschraube wie in (**Abbildung 1**) abgebildet.
- Die Sturzpad-/Schraubeneinheit, die Sie vorher zusammengebaut haben, in die Montagehalterung einsetzen. Die M10x150mm Schraube in das Einschraubgewinde eindrehen, welches die Schraube festhalten wird.

HINWEIS: Um zu vermeiden, dass die Schraube sich verkantet, etwas Druck anwenden und die Schraube entgegen dem Uhrzeiger drehen bis Sie einen Klick hören, dann die Schraube rechtsherum drehen und befestigen.

- Benutzen Sie einen Drehmomentschlüssel mit einem 17mm Steckschlüssel montiert, um die Schraube mit 45 NM zu befestigen. Eventuell müssen Sie das Sturzpad in Position halten, um zu verhindern, dass es sich während des Festziehens dreht.
- Wiederholen Sie diese Schritte an der anderen Seite des Motorrads und stellen Sie sicher, dass die Sturz pads ordnungsgemäß ausgerichtet sind.
- Wenn alles montiert ist, überprüfen Sie erneut die Drehmoment-Einstellungen und die Position/Orientierung der Sturz pads. Die Sturzpad-Kappen (**ARTIKEL 2**) anbringen und anschließend den Heber entfernen.

AUSGABE 1 - 29/07/2021 (WW)

CONSUMER NOTICE

The catalogue description and any exhibition of samples are only broad indications of the Products and R&G may make design changes which do not diminish their performance or visual appeal and supplying them in such state shall conform to the order. The Buyer acknowledges no representation or warranty (other than as to title) has been given or will apply to the Products other than those in R&G's order or confirmation and the Buyer confirms it has chosen the Products as being of merchantable quality and suitable for its particular purposes. Where R&G fits the Products or undertakes other services it shall exercise reasonable skill and care and rectify any fault free of charge unless the workmanship has been disturbed. The Buyer is responsible for ensuring that the warranty on the motorcycle is not affected by the fitting of the Products. On return of any defective Products R&G shall at its option either supply a replacement or refund the purchase money but shall not be liable if the Products have been modified or used or maintained otherwise than in accordance with R&G's or manufacturer's instructions and good engineering practice or if the defect arises from accident or neglect. Other than identified above and subject to

R&G Racing

Unit 1, Shelley's Lane, East Worldham, Alton, Hampshire, GU34 3AQ

Tel: +44 (0)1420 89007 Fax: +44 (0)1420 87301 www.rg-racing.com Email: info@rg-racing.com



R&G not limiting its liability for causing death and personal injury, it shall not be liable for indirect or consequential loss and otherwise its liability shall be limited to the amounts paid by the Buyer for the Products or the fitting or service concerned. These terms do not affect the Buyer's statutory rights.

R&G RACING RETURNS POLICY (NON-FAULTY GOODS)

Returns must be pre-authorized (if not pre-authorized the return will be rejected). Goods may only be returned direct to us if they were purchased direct from us (customer must prove if necessary). Otherwise to be returned to original vendor. Goods must be in re-sellable condition, in the opinion of R&G Racing. All returns are subject to a 25% restocking and handling fee (25% of the gross value exc. P&P – at the prevailing price at time of purchase). The customer must pay any and all carriage charges. No returns of discontinued products, unless within 14 days of purchase. This policy does not affect your statutory rights and does not refer to faulty goods.

R&G Racing

Unit 1, Shelley's Lane, East Worldham, Alton, Hampshire, GU34 3AQ

Tel: +44 (0)1420 89007 Fax: +44 (0)1420 87301 www.rg-racing.com Email: info@rg-racing.com