



**AB0029**

**FITTING INSTRUCTIONS FOR AB0029BK ADVENTURE BARS**  
**KAWASAKI VERSYS-X 300 2017**

Page | 1



**THIS KIT CONTAINS THE ITEMS PICTURED AND LABELLED BELOW.**  
**DO NOT PROCEED UNTIL YOU ARE SURE ALL PARTS ARE PRESENT.**

Please note that the way the kit is packed does not necessarily represent the way of mounting to the bike  
Please note that in cases where kits are packed with rubber washers holding the components onto the bolt – *the rubber washers should be thrown away!*

THE PARTS SHOWN MAY BE REPRESENTATIVE ONLY (FOR CLARITY OF INSTRUCTIONS ONLY)

Digital copies of these instructions are available to download from [www.rg-racing.com](http://www.rg-racing.com)

**GENERAL TORQUE SETTINGS**

- M4 BOLT = 8Nm
- M5 BOLT = 12Nm
- M6 BOLT = 15Nm
- M8 BOLT = 20Nm
- M10 BOLT = 40Nm

R&G

Unit 1, Shelley's Lane, East Worldham, Alton, Hampshire, GU34 3AQ  
Tel: +44 (0)1420 89007 Fax: +44 (0)1420 87301 [www.rg-racing.com](http://www.rg-racing.com) Email: [info@rg-racing.com](mailto:info@rg-racing.com)



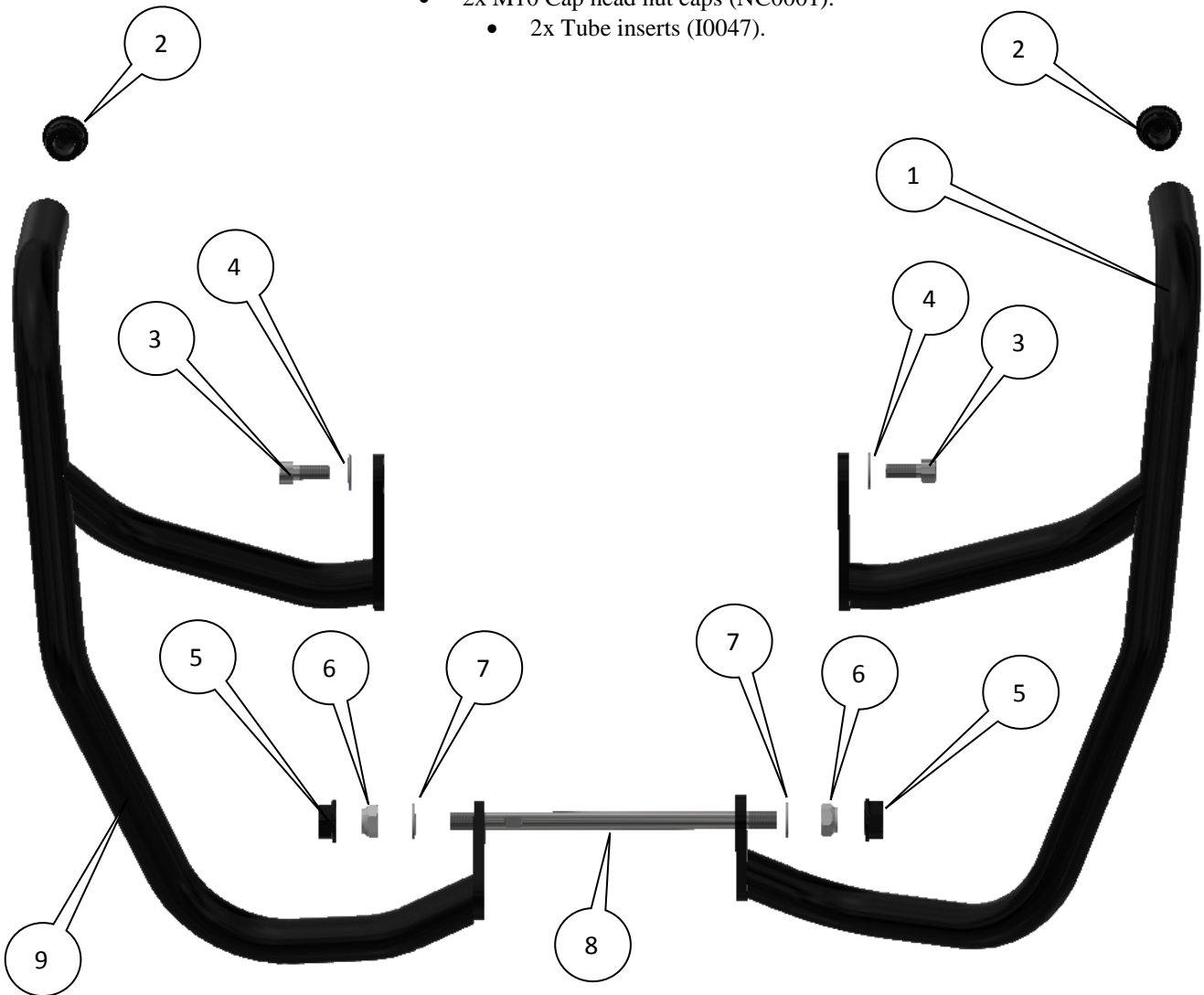
**AB0029**

**TOOLS REQUIRED**

- Socket set to include 14 (x2) and 17mm (x2) sockets and wrench.
- Set of Allen keys to include 5mm A/F (or socket bit and wrench).
  - Torque wrench (up to 40Nm).
  - Soft faced mallet.

**In This Kit, There Should Be**

- 1x Left Hand Side Adventure Bar (AB0029 LHS ASSY).
- 1x Right Hand Side Adventure Bar (AB0029 RHS ASSY).
- 1x Replacement engine bar (EB024=M10x180mm long).
- 2x M8x1.25x20mm long cap head bolts (upper mounts both sides).
  - 2x M8 Washers.
  - 2x M10 Nyloc Nuts.
  - 2x M10 Washers.
- 2x M10 Cap head nut caps (NC0001).
  - 2x Tube inserts (I0047).



R&G

Unit 1, Shelley's Lane, East Worldham, Alton, Hampshire, GU34 3AQ  
Tel: +44 (0)1420 89007 Fax: +44 (0)1420 87301 [www.rg-racing.com](http://www.rg-racing.com) Email: [info@rg-racing.com](mailto:info@rg-racing.com)

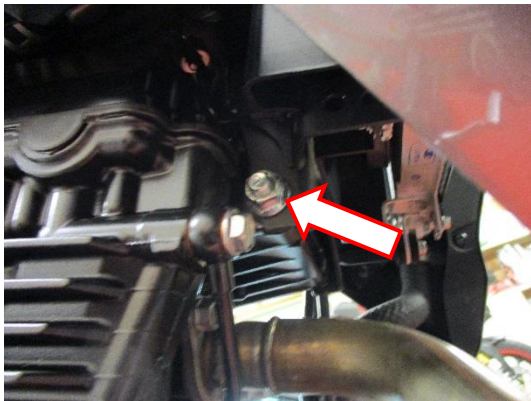


**AB0029**

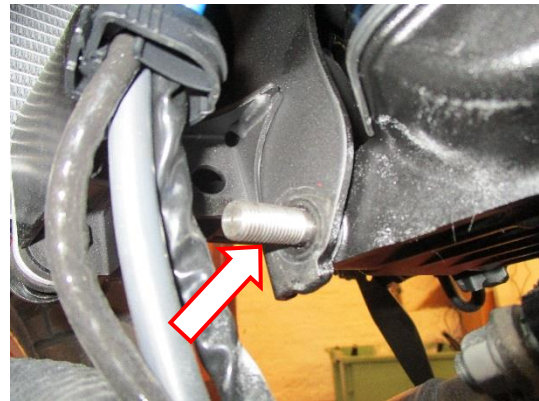
**LEGEND**

Page | 3

- ITEM 1 = ADVENTURE BAR LEFT-HAND SIDE (AB0029 LHS ASSY) (x1).
- ITEM 2 = TUBE INSERTS (I0047) (x2).
- ITEM 3 = M8x1.25x20mm LONG CAP HEAD BOLTS (x2).
- ITEM 4 = M8 WASHERS (x2).
- ITEM 5 = M10 NUT CAPS (NC0001) (x2).
- ITEM 6 = M10 NYLOC NUTS (x2).
- ITEM 7 = M10 WASHERS (x2)
- ITEM 8 = M10 ENGINE BAR (EB024=180mm LONG) (x1).
- ITEM 9 = ADVENTURE BAR RIGHT-HAND SIDE (AB0029 RHS ASSY) (x1).



PICTURE 1



PICTURE 2



PICTURE 3



PICTURE 4

R&G

Unit 1, Shelley's Lane, East Worldham, Alton, Hampshire, GU34 3AQ  
Tel: +44 (0)1420 89007 Fax: +44 (0)1420 87301 [www.rg-racing.com](http://www.rg-racing.com) Email: [info@rg-racing.com](mailto:info@rg-racing.com)



**AB0029**

## **FITTING INSTRUCTIONS**

### **Off side (right side as you sit on bike)**

- Remove the nut from the original engine bolt arrowed in picture 1.

Page | 4

### **Near side (left side as you sit on bike)**

- It is a good idea to support the engine at this point to prevent the engine moving to aid assembly.
- Use the new engine bar (item 8) to push the original bolt out (a soft mallet may be carefully used).
- Leave equal amounts of the engine bar protruding from either side of the engine mounting brackets.
- Carefully offer the left-hand side adventure bar (item 1) into position shown in top picture and secure the upper bracket in position using one of the M8 bolts (item 3) and one of the M8 washers (item 4) as shown in picture 4.
- Secure the lower bracket in position using one of the M10 nyloc nuts (item 6) with one of the M10 washers (item 7) as shown in picture 3 (please ensure the nut is fully engaged).

### **Off side (right side as you sit on bike)**

- Repeat the above procedure for the opposite side using the right-hand side adventure bar (item 9).
- Tighten all nuts (please ensure both nuts are fully engaged), tighten all bolts.
- Push the two tube inserts (item 2) into the open ends of the adventure bars.
- Finally fit the two rubber nut caps (item 5) onto the lower mounting nuts.

ISSUE 1 19/06/2017 (NSY)

## **CONSUMER NOTICE**

The catalogue description and any exhibition of samples are only broad indications of the Products and R&G may make design changes which do not diminish their performance or visual appeal and supplying them in such state shall conform to the order. The Buyer acknowledges no representation or warranty (other than as to title) has been given or will apply to the Products other than those in R&G's order or confirmation and the Buyer confirms it has chosen the Products as being of merchantable quality and suitable for its particular purposes. Where R&G fits the Products or undertakes other services it shall exercise reasonable skill and care and rectify any fault free of charge unless the workmanship has been disturbed. The Buyer is responsible for ensuring that the warranty on the motorcycle is not affected by the fitting of the Products. On return of any defective Products R&G shall at its option either supply a replacement or refund the purchase money but shall not be liable if the Products have been modified or used or maintained otherwise than in accordance with R&G's or manufacturer's instructions and good engineering practice or if the defect arises from accident or neglect. Other than identified above and subject to R&G not limiting its liability for causing death and personal injury, it shall not be liable for indirect or consequential loss and otherwise its liability shall be limited to the amounts paid by the Buyer for the Products or the fitting or service concerned. These terms do not affect the Buyer's statutory rights.

## **R&G RETURNS POLICY (NON-FAULTY GOODS)**

Returns must be pre-authorized (if not pre-authorized the return will be rejected). Goods may only be returned direct to us if they were purchased direct from us (customer must prove if necessary). Otherwise to be returned to original vendor. Goods must be in re-sellable condition, in the opinion of R&G. All returns are subject to a 25% restocking and handling fee (25% of the gross value exc. P&P – at the prevailing price at time of purchase). The customer must pay any and all carriage charges. No returns of discontinued products, unless within 14 days of purchase. This policy does not affect your statutory rights and does not refer to faulty goods.

**R&G**

Unit 1, Shelley's Lane, East Worldham, Alton, Hampshire, GU34 3AQ

Tel: +44 (0)1420 89007 Fax: +44 (0)1420 87301 [www.rg-racing.com](http://www.rg-racing.com) Email: [info@rg-racing.com](mailto:info@rg-racing.com)





**AB0029**

**NOTICE DE MONTAGE POUR AB0029BK BARRES AVENTURE  
KAWASAKI VERSYS-X 300 2017**

Page | 5



**Le kit contient les articles exposés ci-dessous, vérifier que toutes les pièces soient présentes avant de procéder au montage.**

**La façon dont le kit est emballé ne correspond pas forcément à la façon de monter les pièces sur la moto.**

**Notez que si les kits sont emballés avec des rondelles en caoutchouc servant à tenir les composants, ces rondelles doivent être jetées.**

**LES PARTIES PRESENTEES PEUVENT ETRE UNIQUEMENT REPRESENTATIVES (POUR LA CLARTE DES INSTRUCTIONS UNIQUEMENT)**

**Notice disponible au téléchargement sur [www.rg-racing.com](http://www.rg-racing.com)**

**VALEURS DE SERRAGE RECOMMANDEES**

M4 BOULON = 8Nm  
M5 BOULON = 12Nm  
M6 BOULON = 15Nm  
M8 BOULON = 20Nm  
M10 BOULON = 40Nm

R&G

Unit 1, Shelley's Lane, East Worldham, Alton, Hampshire, GU34 3AQ  
Tel: +44 (0)1420 89007 Fax: +44 (0)1420 87301 [www.rg-racing.com](http://www.rg-racing.com) Email: [info@rg-racing.com](mailto:info@rg-racing.com)



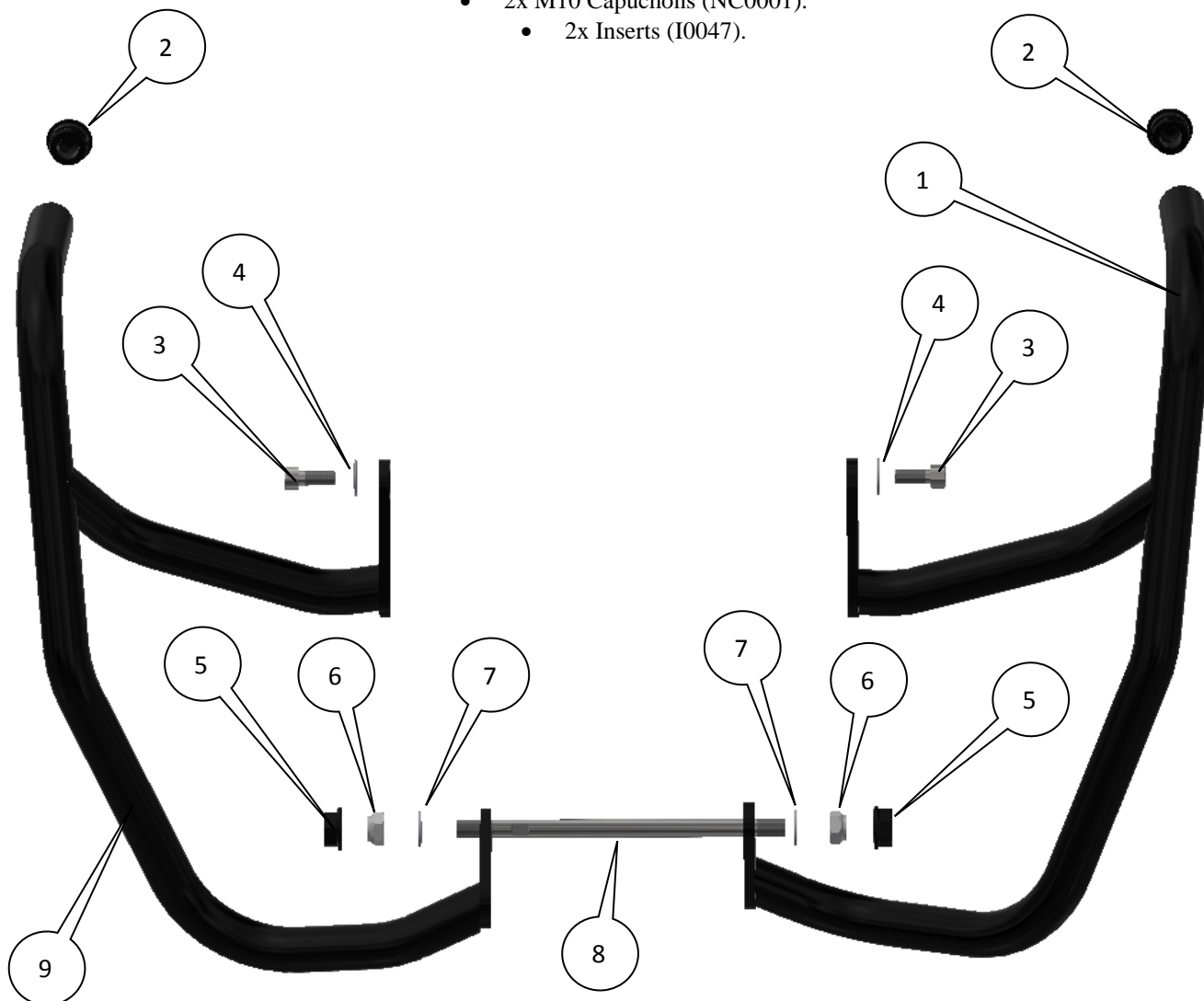
**AB0029**

**OUTILS REQUIS**

- Jeu de Clé à cliquet + douille de 14 (x2) et 17mm (x2).
- Jeu de clés Allen 5mm A/F (ou Clé à cliquet + douille).
  - Clé dynamométrique (à 40Nm).
  - Maillet (doux).

**Le kit doit contenir:**

- 1x Barre Aventure Gauche (AB0029 Assemblage gauche).
- 1x Barre Aventure du côté droit (AB0029 Assemblage droit).
- 1x Axe moteur de remplacement (EB024=M10x180mm de long).
- 2x M8x1.25x20mm Boulons (supports supérieurs des 2 côtés).
  - 2x M8 Rondelles.
  - 2x M10 Écrous.
  - 2x M10 Rondelles.
- 2x M10 Capuchons (NC0001).
  - 2x Inserts (I0047).



R&G



**AB0029**

Page | 7

### **LÉGENDE**

ARTICLE 1 = BARRE AVENTURE CÔTÉ GAUCHE (AB0029 Assemblage gauche) (x1).

ARTICLE 2 = INSERTS CYLINDRIQUES (I0047) (x2).

ARTICLE 3 = M8x1.25x20mm BOULONS (x2).

ARTICLE 4 = M8 RONDELLES (x2).

ARTICLE 5 = M10 CAPUCHONS D'ÉCROUS (NC0001) (x2).

ARTICLE 6 = M10 ÉCROUS (x2).

ARTICLE 7 = M10 RONDELLES (x2)

ARTICLE 8 = M10 AXE MOTEUR (EB024=180mm DE LONG) (x1).

ARTICLE 9 = BARRE AVENTURE CÔTÉ DROIT (AB0029 Assemblage droit) (x1).

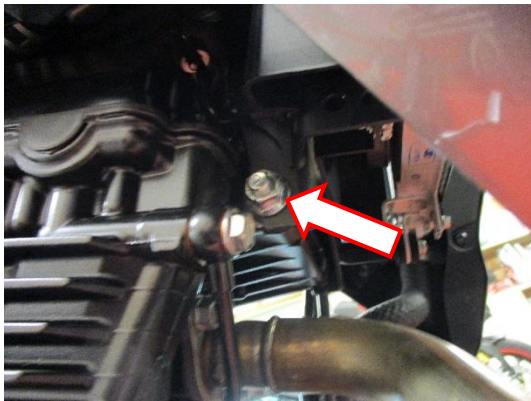


PHOTO 1

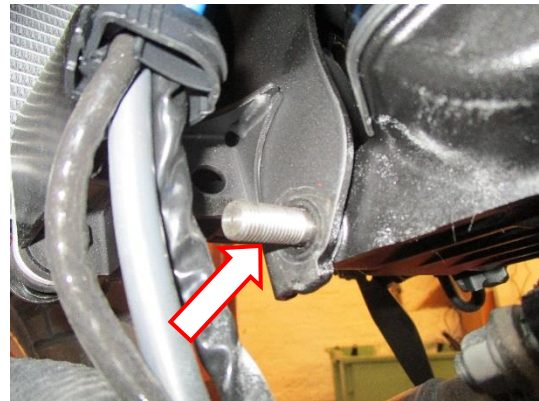


PHOTO 2



PHOTO 3



PHOTO 4

R&G

Unit 1, Shelley's Lane, East Worldham, Alton, Hampshire, GU34 3AQ

Tel: +44 (0)1420 89007 Fax: +44 (0)1420 87301 [www.rg-racing.com](http://www.rg-racing.com) Email: [info@rg-racing.com](mailto:info@rg-racing.com)



**AB0029**

## **NOTICE DE MONTAGE**

### **Côté droit (lorsqu'on est assis sur la moto)**

- Enlever l'écrou du boulon moteur d'origine, voir photo 1.

### **Côté gauche (lorsqu'on est assis sur la moto)**

- Il est judicieux de supporter le moteur pour éviter au moteur de bouger l'ensemble.
- Utiliser le nouvel axe moteur (article 8) pour extraire le boulon d'origine (un maillet doux peut être utilisé).
- Laisser des longueurs équivalentes d'axe moteur dépasser de chaque côté des supports de fixation moteur.
- Monter la barre Aventure du côté gauche (article 1) en position, voir photo, puis fixer le support supérieur en position en utilisant un boulon M8 (article 3) et une rondelle M8 (article 4), voir photo 4.
- Fixer le support inférieur en position en utilisant un écrou M10 (article 6) avec une rondelle M10 (article 7) voir photo 3 (veiller à ce que l'écrou soit complètement engagé).

### **Côté droit (lorsqu'on est assis sur la moto)**

- Répéter l'opération du dessus pour le côté opposé en utilisant la barre Aventure du côté droit (article 9).
- Serrer tous les écrous (Veiller à ce que les 2 écrous soient complètement engagés), serrer tous les boulons.
- Pousser les 2 inserts cylindriques (article 2) dans les ouvertures des barres Aventure.
- Placer les 2 capuchons d'écrou en caoutchouc (article 5) sur les écrous de fixation inférieurs.

ISSUE 1 19/06/2017 (NSY)

## **CONSUMER NOTICE**

The catalogue description and any exhibition of samples are only broad indications of the Products and R&G may make design changes which do not diminish their performance or visual appeal and supplying them in such state shall conform to the order. The Buyer acknowledges no representation or warranty (other than as to title) has been given or will apply to the Products other than those in R&G's order or confirmation and the Buyer confirms it has chosen the Products as being of merchantable quality and suitable for its particular purposes. Where R&G fits the Products or undertakes other services it shall exercise reasonable skill and care and rectify any fault free of charge unless the workmanship has been disturbed. The Buyer is responsible for ensuring that the warranty on the motorcycle is not affected by the fitting of the Products. On return of any defective Products R&G shall at its option either supply a replacement or refund the purchase money but shall not be liable if the Products have been modified or used or maintained otherwise than in accordance with R&G's or manufacturer's instructions and good engineering practice or if the defect arises from accident or neglect. Other than identified above and subject to R&G not limiting its liability for causing death and personal injury, it shall not be liable for indirect or consequential loss and otherwise its liability shall be limited to the amounts paid by the Buyer for the Products or the fitting or service concerned. These terms do not affect the Buyer's statutory rights.

## **R&G RETURNS POLICY (NON-FAULTY GOODS)**

Returns must be pre-authorized (if not pre-authorized the return will be rejected). Goods may only be returned direct to us if they were purchased direct from us (customer must prove if necessary). Otherwise to be returned to original vendor. Goods must be in re-sellable condition, in the opinion of R&G. All returns are subject to a 25% restocking and handling fee (25% of the gross value exc. P&P – at the prevailing price at time of purchase). The customer must pay any and all carriage charges. No returns of discontinued products, unless within 14 days of purchase. This policy does not affect your statutory rights and does not refer to faulty goods.

R&G

Unit 1, Shelley's Lane, East Worldham, Alton, Hampshire, GU34 3AQ

Tel: +44 (0)1420 89007 Fax: +44 (0)1420 87301 [www.rg-racing.com](http://www.rg-racing.com) Email: [info@rg-racing.com](mailto:info@rg-racing.com)





**AB0029**

**MONTAGEANLEITUNG FÜR AB0029BK ADVENTURE STURZBÜGEL**  
**KAWASAKI VERSYS-X 300 2017**

Page | 9



**ALLE TEILE SIND UNTEN ABGEBILDET UND GEKENNZEICHNET. BEVOR SIE MIT DER MONTAGE BEGINNEN, ÜBERPRÜFEN SIE, DASS ALLE TEILE VORHANDEN SIND.**

**Hinweis:** Die Verpackung der Teile stellt nicht die Reihenfolge der Montage dar.

Hinweis für Kits mit Plastikunterlegscheiben an den Schrauben – *Diese Plastikunterlegscheiben werden nicht für den Einbau benötigt!*

DIE UNTEN ABGEBILDETEN TEILE DIENEN LEDIGLICH ZUR ERKLÄRUNG.

**Eine digitale Version dieser Montageanleitung kann auf folgender Seite heruntergeladen werden:**  
[www.rg-racing.com](http://www.rg-racing.com)

**ANZUGSDREHMOMENTE:**

M4 SCHRAUBE = 8 Nm  
M5 SCHRAUBE = 12 Nm  
M6 SCHRAUBE = 15 Nm  
M8 SCHRAUBE = 20 Nm  
M10 SCHRAUBE = 40 Nm

R&G

Unit 1, Shelley's Lane, East Worldham, Alton, Hampshire, GU34 3AQ  
Tel: +44 (0)1420 89007 Fax: +44 (0)1420 87301 [www.rg-racing.com](http://www.rg-racing.com) Email: [info@rg-racing.com](mailto:info@rg-racing.com)



**AB0029**

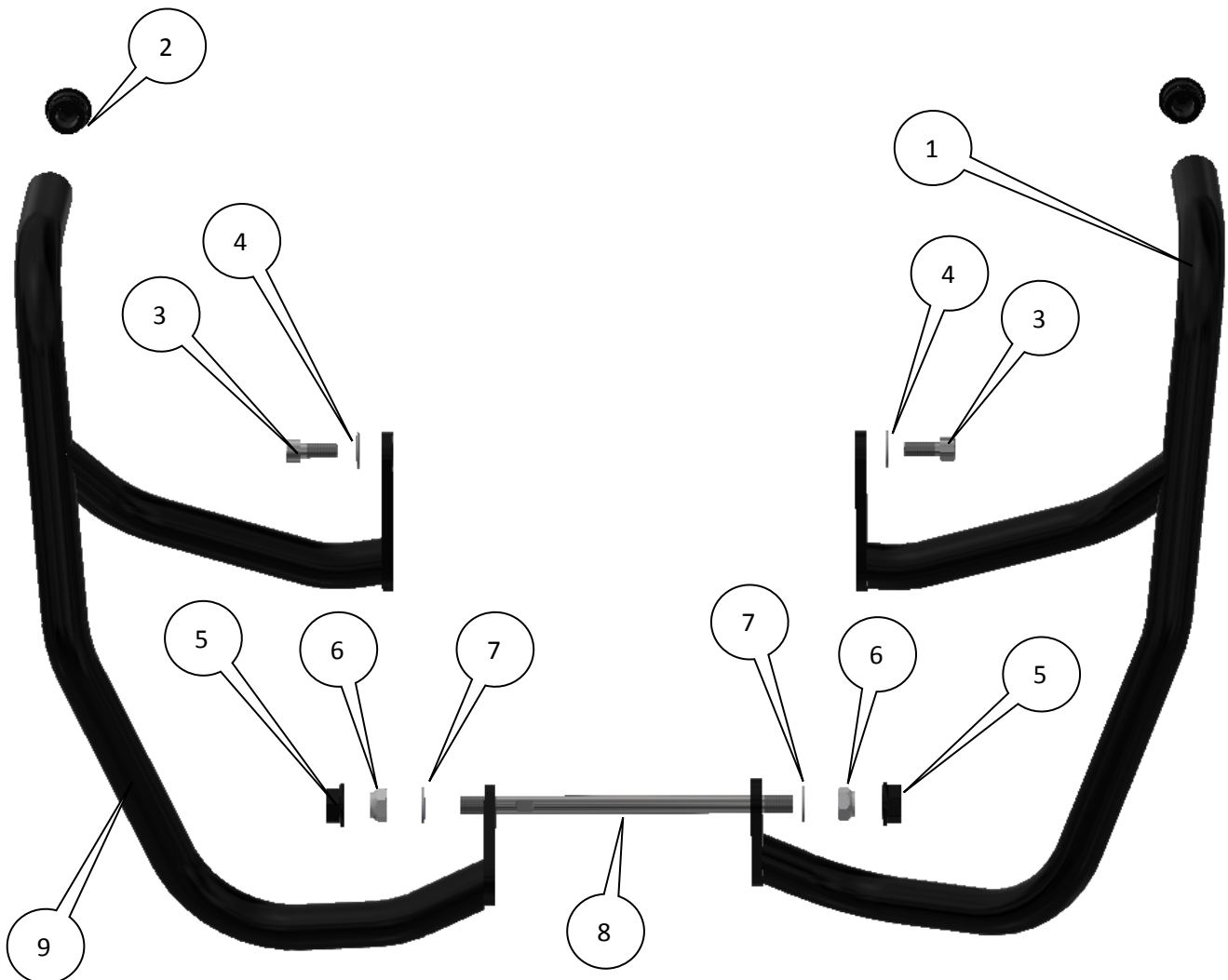
**SIE BENÖTIGEN FOLGENDES WERKZEUG**

- Steckschlüsselsatz mit 2 x 14mm und 2 x 17mm Steckschlüsseln und Verlängerungen
  - Satz Inbusschlüssel mit 5mm Inbusschlüssel
  - Drehmomentschlüssel (bis 40Nm)
  - Schonhammer

Page | 10

**Inhalt des Kits:**

- 1x Adventure Sturzbügel, linke Seite (AB0029 LHS ASSY)
- x Adventure Sturzbügel, rechte Seite (AB0029 RHS ASSY)
- 1x Austausch Verbindungsstange ((EB024=M10x180mm Länge)
- 2x M8x1,25x20mm Inbusschrauben (obere Halterungen an beiden Seiten)
  - 2x M8 Unterlegscheibe
  - 2x M12 selbstsichernde Mutter
  - 2x M10 Unterlegscheibe
  - 2x M12 Hutmutter (NC0001)
  - 2x Verschlussstopfen (I0047)



R&G

Unit 1, Shelley's Lane, East Worldham, Alton, Hampshire, GU34 3AQ  
Tel: +44 (0)1420 89007 Fax: +44 (0)1420 87301 [www.rg-racing.com](http://www.rg-racing.com) Email: [info@rg-racing.com](mailto:info@rg-racing.com)



**AB0029**

## **LIEFERUMFANG**

Page | 11

- ARTIKEL 1 = ADVENTURE STURZBÜGEL LINKE SEITE (AB0029 LHS ASSY) (x1)
- ARTIKEL 2 = VERSCHLUSSSTOPFEN (I0047) (x2)
- ARTIKEL 3 = M8x1,25x20mm INBUSSCHRAUBE (x2)
- ARTIKEL 4 = M8 UNTERLEGSSCHEIBE (x2)
- ARTIKEL 5 = M10 KAPPEN FÜR DIE MUTTERN (NC0001) (x2)
- ARTIKEL 6 = M10 SELBSTSICHERNDE MUTTER (x2)
- ARTIKEL 7 = M10 UNTERLEGSSCHEIBE (x2)
- ARTIKEL 8 = M10 VERBINDUNGSSTANGE (EB024=180mm LÄNGE) (x1)
- ARTIKEL 9 = ADVENTURE STURZBÜGEL RECHTE SEITE (AB0029 RHS ASSY) (x1)

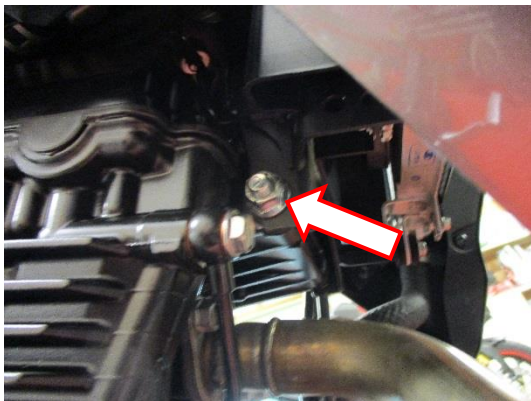


ABBILDUNG 1

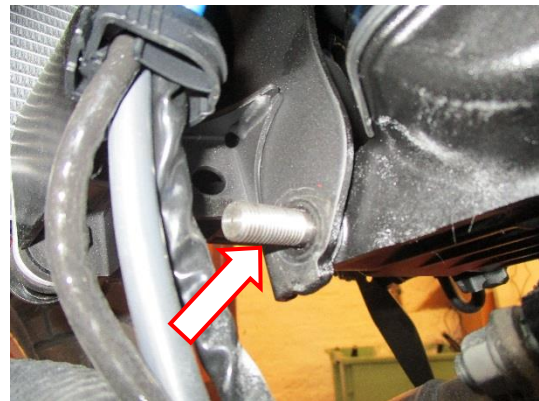


ABBILDUNG 2

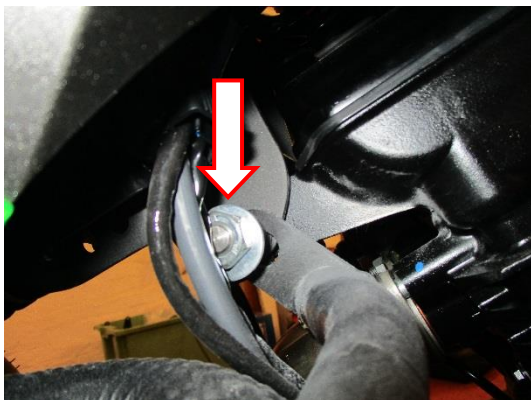


ABBILDUNG 3



ABBILDUNG 4

R&G

Unit 1, Shelley's Lane, East Worldham, Alton, Hampshire, GU34 3AQ  
Tel: +44 (0)1420 89007 Fax: +44 (0)1420 87301 [www.rg-racing.com](http://www.rg-racing.com) Email: [info@rg-racing.com](mailto:info@rg-racing.com)



**AB0029**

## **MONTAGEANLEITUNG**

### **Rechte Seite (in Fahrtrichtung)**

- Entfernen Sie die Mutter von der original Motorschraube, die in Abbildung 1 gekennzeichnet ist.

### **Linke Seite (in Fahrtrichtung)**

- Es empfiehlt sich, den Motor zu diesem Zeitpunkt zu stützen, um zu verhindern, dass der Motor sich während der Montage bewegt.
- Benutzen Sie die neue Verbindungsstange (Artikel 8), um die original Schraube rauszuschieben (evtl. einen Schonhammer hierbei vorsichtig anwenden).
- Die Verbindungsstange sollte dann gleichmäßig an beiden Seiten der Motor-Montagehalterungen hervorstehen.
- Den Adventure Sturzbügel für die linke Seite (Artikel 1) vorsichtig in Position bringen, wie in der oberen Abbildung abgebildet, und die obere Halterung mit einer M8 Schraube (Artikel 3) und einer M8 Unterlegscheibe (Artikel 4) in Position befestigen - siehe Abbildung 4.
- Die untere Halterung mit einer M10 selbstsichernden Mutter (Artikel 6) und einer M10 Unterlegscheibe (Artikel 7) in Position befestigen – siehe Abbildung 3. Bitte stellen Sie sicher, dass die Mutter komplett eingerastet ist.

### **Rechte Seite (in Fahrtrichtung)**

- Wiederholen Sie den Vorgang an der rechten Seite mit dem Adventure Sturzbügel für die rechte Seite (Artikel 9).
- Ziehen Sie alle Muttern und alle Schrauben fest (bitte stellen Sie sicher, dass beide Muttern komplett eingerastet sind).
- Die zwei Verschlussstopfen (Artikel 2) an den offenen Enden der Adventure Sturzbügel anbringen.
- Montieren Sie die zwei Kappen für die Muttern (Artikel 5) an den unteren Befestigungsmuttern.

AUSGABE 1 19/06/2017 (NSY)

#### **CONSUMER NOTICE**

The catalogue description and any exhibition of samples are only broad indications of the Products and R&G may make design changes which do not diminish their performance or visual appeal and supplying them in such state shall conform to the order. The Buyer acknowledges no representation or warranty (other than as to title) has been given or will apply to the Products other than those in R&G's order or confirmation and the Buyer confirms it has chosen the Products as being of merchantable quality and suitable for its particular purposes. Where R&G fits the Products or undertakes other services it shall exercise reasonable skill and care and rectify any fault free of charge unless the workmanship has been disturbed. The Buyer is responsible for ensuring that the warranty on the motorcycle is not affected by the fitting of the Products. On return of any defective Products R&G shall at its option either supply a replacement or refund the purchase money but shall not be liable if the Products have been modified or used or maintained otherwise than in accordance with R&G's or manufacturer's instructions and good engineering practice or if the defect arises from accident or neglect. Other than identified above and subject to R&G not limiting its liability for causing death and personal injury, it shall not be liable for indirect or consequential loss and otherwise its liability shall be limited to the amounts paid by the Buyer for the Products or the fitting or service concerned. These terms do not affect the Buyer's statutory rights.

#### **R&G RETURNS POLICY (NON-FAULTY GOODS)**

Returns must be pre-authorized (if not pre-authorized the return will be rejected). Goods may only be returned direct to us if they were purchased direct from us (customer must prove if necessary). Otherwise to be returned to original vendor. Goods must be in re-sellable condition, in the opinion of R&G. All returns are subject to a 25% restocking and handling fee (25% of the gross value exc. P&P – at the prevailing price at time of purchase). The customer must pay any and all carriage charges. No returns of discontinued products, unless within 14 days of purchase. This policy does not affect your statutory rights and does not refer to faulty goods.

**R&G**

Unit 1, Shelley's Lane, East Worldham, Alton, Hampshire, GU34 3AQ

Tel: +44 (0)1420 89007 Fax: +44 (0)1420 87301 [www.rg-racing.com](http://www.rg-racing.com) Email: [info@rg-racing.com](mailto:info@rg-racing.com)