



FP0201BK

**FITTING INSTRUCTIONS FOR FP0201BK FORK PROTECTORS**  
**BMW R NINE T SCRAMBLER, RACER, PURE, URBAN G/S 2017-**



*LEFT SIDE*

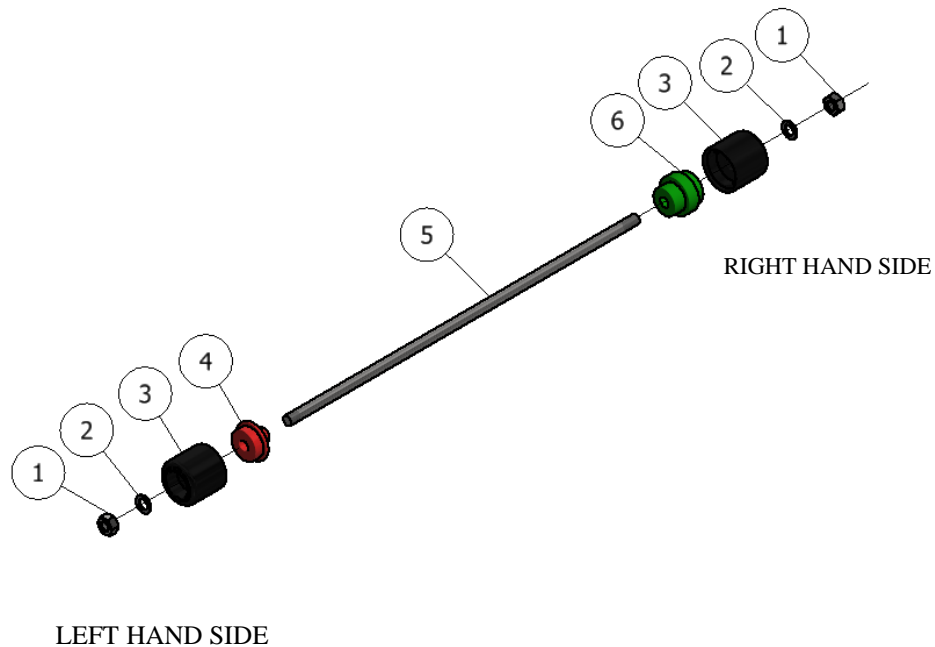


*RIGHT SIDE*

**THIS KIT CONTAINS THE ITEMS PICTURED AND LABELLED BELOW.**  
**DO NOT PROCEED UNTIL YOU ARE SURE ALL PARTS ARE PRESENT.**

**Please note that the way the kit is packed does not necessarily represent the way of mounting to the bike.**

Please note that in cases where kits are packed with a plastic tube separating components on the spindle bar (this tube  
THE PARTS SHOWN MAY BE REPRESENTATIVE ONLY (FOR CLARITY OF INSTRUCTIONS ONLY)





FP0201BK

## **LEGEND**

- ITEM 1 = M8 NYLOC NUTS (x2)
- ITEM 2 = M8 WASHERS (x2)
- ITEM 3 = R&G CRASH BOBBINS (B0445) (x2)
- ITEM 4 = L/H SPACER (S01079) (x1)
- ITEM 5 = SPINDLE BAR (SB126) (x1)
- ITEM 6 = R/H SPACER (S0768) (x1)

## **TOOLS REQUIRED**

- Socket set to include 2x 13mm sockets and wrenches

## **FITTING INSTRUCTIONS**

- From the kit, fit one nyloc nut (item 1) and a washer (item 2) onto the shorter thread of the spindle bar (item 5). Engage the nyloc nut so the plastic insert of nut is fully engaged.
- Insert one bobbin (item 3) to the spindle bar so that the nyloc nut and washer just fitted sit in the counter-bore of the bobbin. This is the counter-bore closest to the logo.
- Insert the left hand side spacer (item 4) to the spindle bar so the spacer sits inside the other counter-bore on the other side of the bobbin.
- Insert the whole assembly into the front wheel spindle from the left hand side (as you sit on the bike)
- Insert the right hand side spacer (item 6) into the protruded end of the spindle on the right hand side. Ensure that the spacer also sits inside the hex head OEM front wheel spindle head.
- Insert the remaining bobbin (item 3) through the protruded end of the spindle bar (item 5) follow by the remaining washer (item 2) and nyloc nut (item 1).
- Tighten both nuts on both sides evenly and ensure that the plastic insert of both nuts are fully engaged.
- Do not overtighten – the nyloc nuts will hold it tight
- Ensure that the assembled components match the exploded diagram shown on page 1.

ISSUE 1 03/10/2017 (HB)

## **CONSUMER NOTICE**

The catalogue description and any exhibition of samples are only broad indications of the Products and R&G may make design changes which do not diminish their performance or visual appeal and supplying them in such state shall conform to the order. The Buyer acknowledges no representation or warranty (other than as to title) has been given or will apply to the Products other than those in R&G's order or confirmation and the Buyer confirms it has chosen the Products as being of merchantable quality and suitable for its particular purposes. Where R&G fits the Products or undertakes other services it shall exercise reasonable skill and care and rectify any fault free of charge unless the workmanship has been disturbed. The Buyer is responsible for ensuring that the warranty on the motorcycle is not affected by the fitting of the Products. On return of any defective Products R&G shall at its option either supply a replacement or refund the purchase money but shall not be liable if the Products have been modified or used or maintained otherwise than in accordance with R&G's or manufacturer's instructions and good engineering practice or if the defect arises from accident or neglect. Other than identified above and subject to R&G not limiting its liability for causing death and personal injury, it shall not be liable for indirect or consequential loss and otherwise its liability shall be limited to the amounts paid by the Buyer for the Products or the fitting or service concerned. These terms do not affect the Buyer's statutory rights.

## **R&G RACING RETURNS POLICY (NON-FAULTY GOODS)**

Returns must be pre-authorized (if not pre-authorized the return will be rejected). Goods may only be returned direct to us if they were purchased direct from us (customer must prove if necessary). Otherwise to be returned to original vendor. Goods must be in resellable condition, in the opinion of R&G Racing. All returns are subject to a 25% restocking and handling fee (25% of the gross value exc. P&P – at the prevailing price at time of purchase). The customer must pay any and all carriage charges. No returns of discontinued products, unless within 14 days of purchase. This policy does not affect your statutory rights and does not refer to faulty goods.

R&G Racing

Unit 1, Shelley's Lane, East Worldham, Alton, Hampshire, GU34 3AQ

Tel: +44 (0)1420 89007 Fax: +44 (0)1420 87301 [www.rg-racing.com](http://www.rg-racing.com) Email: [info@rg-racing.com](mailto:info@rg-racing.com)



FP0201BK

**NOTICE DE MONTAGE POUR FP0200BK PROTECTIONS FOURCHE**  
**BMW R NINE T SCRAMBLER, RACER, PURE, URBAN G/S 2017-**

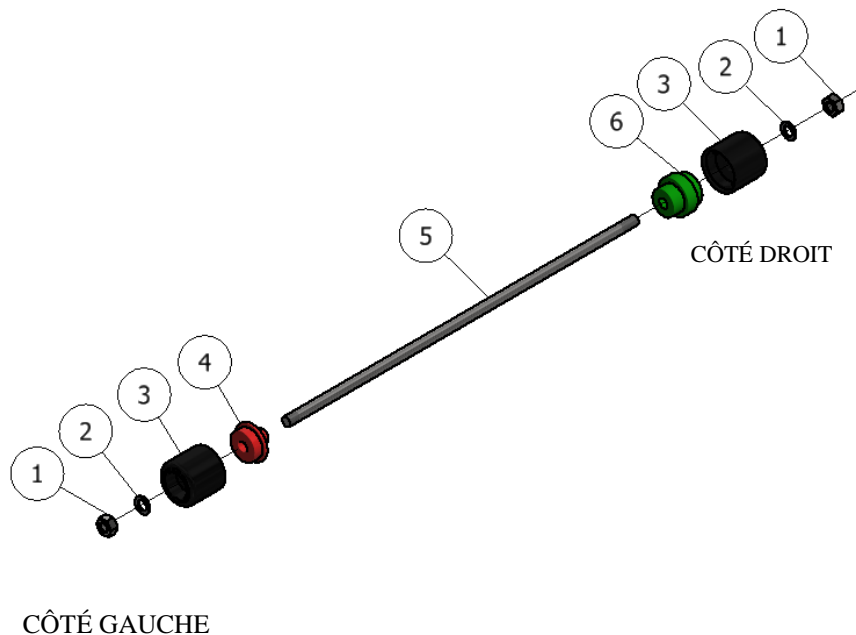


*COTE GAUCHE*



*COTE DROIT*

**LE KIT CONTIENT LES ARTICLES EXPOSES CI-DESSOUS, VERIFIER QUE TOUTES LES PIECES SOIENT PRESENTES AVANT DE PROCEDER AU MONTAGE.**  
**LA FAÇON DONT LE KIT EST EMBALLE NE CORRESPOND PAS FORCEMENT A LA FAÇON DE MONTER LES PIECES SUR LA MOTO.**  
**NOTEZ QUE SI LES KITS SONT EMBALLES AVEC UN TUBE EN PLASTIQUE QUI SEPRE LES COMPOSANTS SUR L'AXE, CE TUBE DOIT ETRE JETE.**



**LÉGENDE**



FP0201BK

ARTICLE 1 = M8 ÉCROUS (x2)  
ARTICLE 2 = M8 RONDELLES (x2)  
ARTICLE 3 = BOBINES R&G (B0445) (x2)  
ARTICLE 4 = ENTRETOISE GAUCHE (S1079) (x1)  
ARTICLE 5 = AXE (SB126) (x1)  
ARTICLE 6 = ENTRETOISE DROITE (S0768) (x1)

### **OUTILS REQUIS**

- Clé à cliquet 2x 13mm + douilles

### **NOTICE DE MONTAGE:**

- Insérer un écrou du kit (article 1) et une rondelle (article 2) sur le filetage le plus court de l'axe (article 5). Engager l'écrou de façon à ce que l'insert en plastique de l'écrou soit complètement engagé.
- Insérer une bobine (article 3) sur l'axe de façon à ce que l'écrou et la rondelle se placent dans le contre alésage de la bobine. C'est le contre alésage le plus proche du logo.
- Insérer l'entretoise gauche (article 4) sur l'axe de façon à ce que l'entretoise se place à l'intérieur de l'autre contre alésage de l'autre côté de la bobine.
- Insérer l'ensemble sur l'axe de roue avant du côté gauche (lorsqu'on est assis sur la moto).
- Insérer l'entretoise du côté droit (article 6) sur l'extrémité dépassant de l'axe du côté droit. Veiller à ce que l'entretoise se place à l'intérieur de la tête d'axe de roue avant d'origine.
- Insérer la bobine restante (article 3) à travers l'extrémité dépassant de l'axe (article 5) suivi de la rondelle restante (article 2) et de l'écrou (article 1).
- Serrer les 2 écrous des 2 côtés de façon identique et veiller à ce que l'insert en plastique des 2 écrous soient complètement engagés.
- Ne pas trop bloquer – les écrous fixent l'ensemble.
- Veiller ce que l'ensemble corresponde au schéma situé en page 1.

ISSUE 1 03/10/2017 (HB)

### **CONSUMER NOTICE**

The catalogue description and any exhibition of samples are only broad indications of the Products and R&G may make design changes which do not diminish their performance or visual appeal and supplying them in such state shall conform to the order. The Buyer acknowledges no representation or warranty (other than as to title) has been given or will apply to the Products other than those in R&G's order or confirmation and the Buyer confirms it has chosen the Products as being of merchantable quality and suitable for its particular purposes. Where R&G fits the Products or undertakes other services it shall exercise reasonable skill and care and rectify any fault free of charge unless the workmanship has been disturbed. The Buyer is responsible for ensuring that the warranty on the motorcycle is not affected by the fitting of the Products. On return of any defective Products R&G shall at its option either supply a replacement or refund the purchase money but shall not be liable if the Products have been modified or used or maintained otherwise than in accordance with R&G's or manufacturer's instructions and good engineering practice or if the defect arises from accident or neglect. Other than identified above and subject to R&G not limiting its liability for causing death and personal injury, it shall not be liable for indirect or consequential loss and otherwise its liability shall be limited to the amounts paid by the Buyer for the Products or the fitting or service concerned. These terms do not affect the Buyer's statutory rights.

### **R&G RACING RETURNS POLICY (NON-FAULTY GOODS)**

Returns must be pre-authorized (if not pre-authorized the return will be rejected). Goods may only be returned direct to us if they were purchased direct from us (customer must prove if necessary). Otherwise to be returned to original vendor. Goods must be in resellable condition, in the opinion of R&G Racing. All returns are subject to a 25% restocking and handling fee (25% of the gross value exc. P&P – at the prevailing price at time of purchase). The customer must pay any and all carriage charges. No returns of discontinued products, unless within 14 days of purchase. This policy does not affect your statutory rights and does not refer to faulty goods.

R&G Racing

Unit 1, Shelley's Lane, East Worldham, Alton, Hampshire, GU34 3AQ

Tel: +44 (0)1420 89007 Fax: +44 (0)1420 87301 [www.rg-racing.com](http://www.rg-racing.com) Email: [info@rg-racing.com](mailto:info@rg-racing.com)