



**FITTING INSTRUCTIONS FOR LP0304BK LICENCE PLATE BRACKET
FOR HONDA CRF300L/CRF300 RALLY 2021-**



THIS KIT CONTAINS THE ITEMS PICTURED AND LABELLED OVER PAGE.

SOME PARTS MAY BE SHOWN FOR CLARITY OF INSTRUCTIONS ONLY.

DO NOT PROCEED UNTIL YOU ARE SURE ALL PARTS ARE PRESENT.

PLEASE READ ALL INSTRUCTIONS BEFORE PROCEEDING.

**IF IN ANY DOUBT WHEN FITTING OUR PRODUCTS, CONSULT ONE OF
OUR DEALERS OR HAVE FITTED BY A QUALIFIED TECHNICIAN.**

PLEASE NOTE THAT THE WAY THE KIT IS PACKED DOES NOT NECESSARILY REPRESENT THE
WAY OF MOUNTING TO THE BIKE.

IN THE EVENT OF RUBBER WASHERS BEING USED TO HOLD COMPONENTS ONTO BOLTS,
THESE RUBBER WASHERS CAN BE THROWN AWAY.

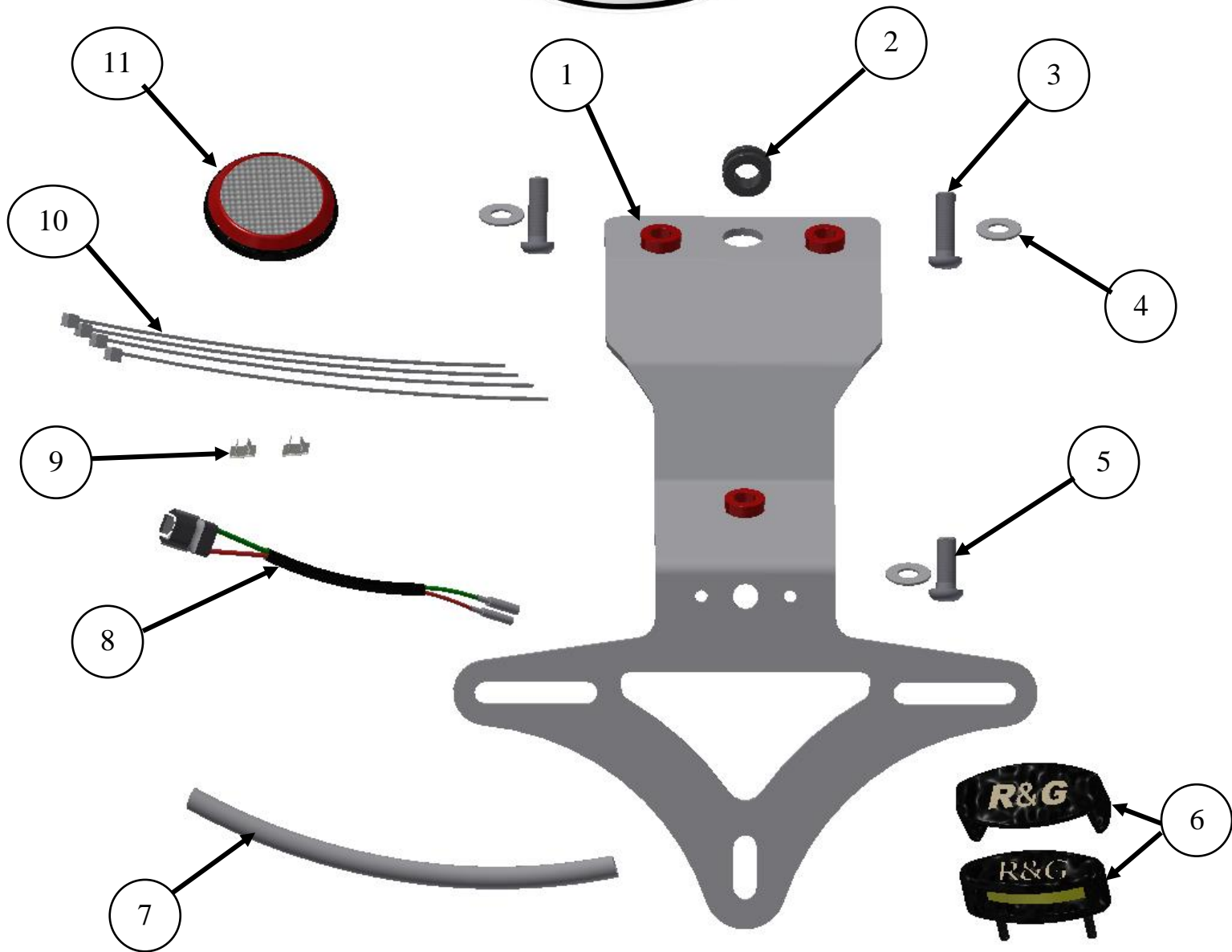
DIGITAL COPIES OF THESE INSTRUCTIONS ARE AVAILABLE FROM:

WWW.RG-RACING.COM



<u>TOOLS REQUIRED</u>	<u>GENERAL TORQUE SETTINGS</u>
<ul style="list-style-type: none"> • Set of metric Allen keys. • Cable cutters/ Electrical wire crimps. • Small amount of adhesive 	<p>M4 BOLT = 8Nm</p> <p>M5 BOLT = 12Nm</p> <p>M6 BOLT = 15Nm</p> <p>M8 BOLT = 20Nm</p> <p>M10 BOLT = 40Nm</p> <p>M12 BOLT = 40Nm</p>

ITEM NO.	LEGEND	QTY
ITEM 1	LICENCE PLATE BRACKET (TB0304)	1
ITEM 2	WIRING GROMMET (RB0008)	1
ITEM 3	M6 x 20mm LONG BUTTON HEAD BOLTS	2
ITEM 4	M6 WASHERS	3
ITEM 5	M6 x 15mm LONG BUTTON HEAD BOLT	1
ITEM 6	LICENCE PLATE ILLUMINATOR ASSEMBLY (LA0002)	1
ITEM 7	180mm LENGTHS OF HEATSHRINK	1
ITEM 8	R&G LICENCE PLATE ILLUMINATOR CONNECTOR (CON0053)	1
ITEM 9	CABLE CLIPS (CLIP 1)	2
ITEM 10	2.5mm CABLE TIES (CT0220)	4
ITEM 11	REFLECTOR (REFL 3)	1



Assembly Diagram



PICTURE 1



PICTURE 2



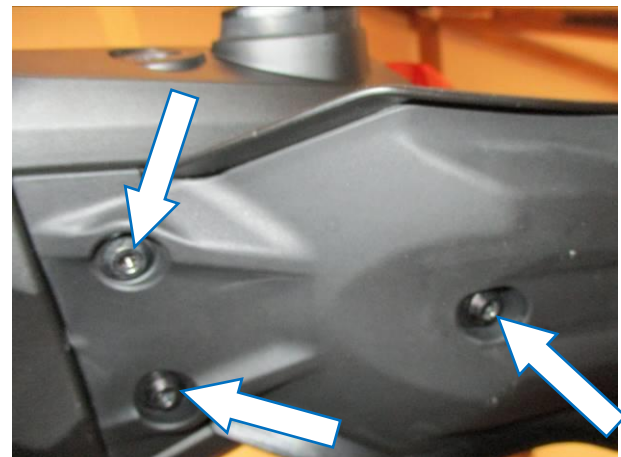
PICTURE 3



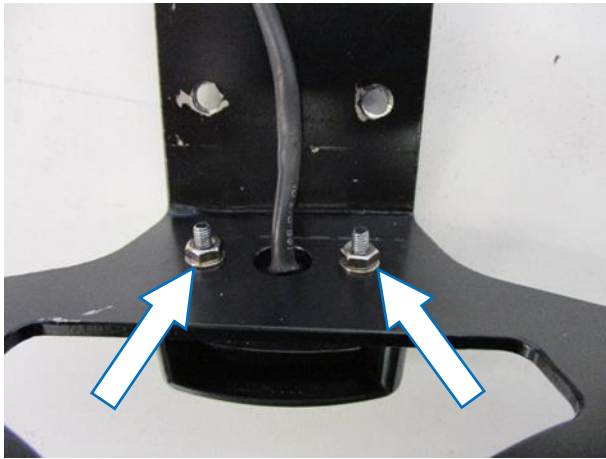
PICTURE 4



PICTURE 5



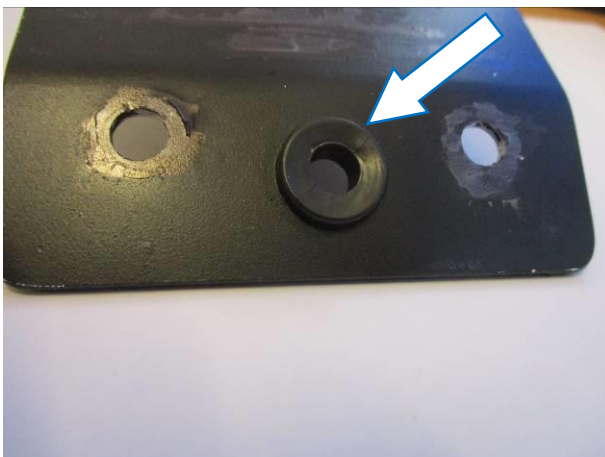
PICTURE 6



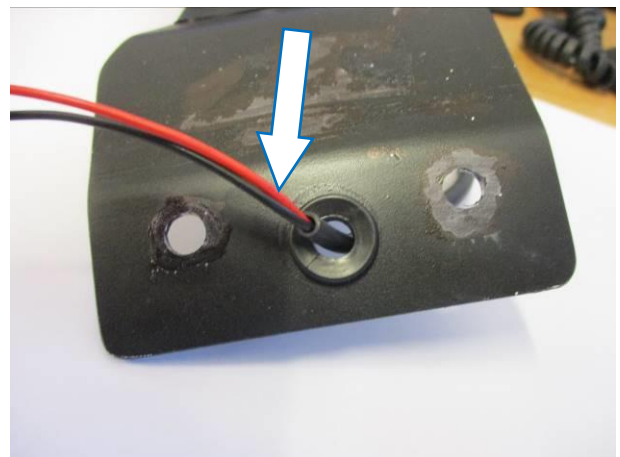
PICTURE 7



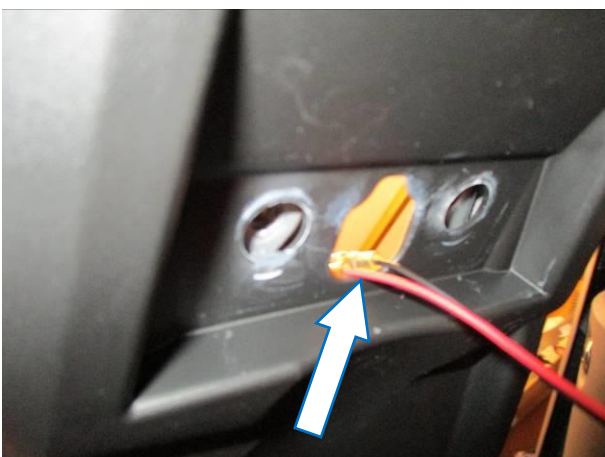
PICTURE 8



PICTURE 9



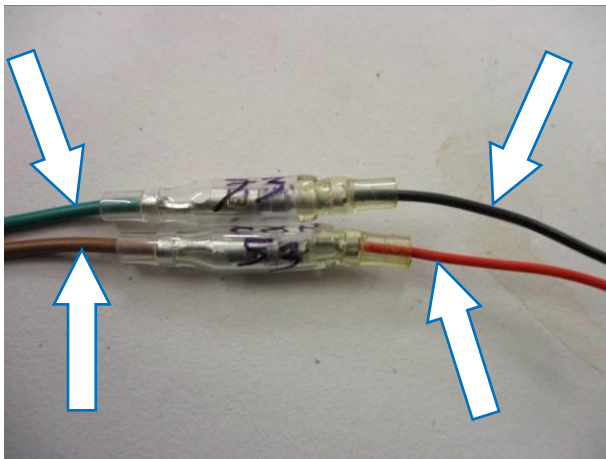
PICTURE 10



PICTURE 11



PICTURE 12



PICTURE 13



PICTURE 14

FITTING INSTRUCTIONS

- To fit the R&G tail tidy, first remove the two forward bungee hooks/bolts arrowed in **pictures 1 and 2** then remove the seat.
- Remove the two rearward bungee hooks/bolts arrowed in **pictures 3 and 4**, then remove the rear cowl to allow access to the wiring.
- Trace the licence plate illuminator light wiring and disconnect the wiring plug socket as shown in **picture 5**.
- Remove the three bolts arrowed in **picture 6** and carefully remove the original licence plate bracket while feeding the wiring through the hole in the under-tray.
- Feed the wires of the new R&G licence plate illuminator (**item 6**) through the central hole in the new licence plate bracket (**item 1**) as shown in **pictures 7 and 8**.
- Secure using the washers and nut supplied as shown in **picture 7**.
- Fit the light shroud and use a small amount of adhesive to hold it in position as shown in **picture 8**.
- Fit one length of heat-shrink (**item 7**) to the wires and heat gently to shrink to fit.
- Fit the rubber wiring grommet (**item 2**) into the central hole as shown in **picture 9**, then feed the wiring through the grommet as shown in **picture 10**.
- Offer the new licence plate bracket into position on the under-tray while feeding the wiring through the slot in the under-tray as shown in **picture 11** and secure using the two longer bolts with washers (**items 3 and 4**) in position shown in **picture 12** (shown with solid arrows), use the shorter bolt with washer (**items 5 and 4**) through the rear most hole as shown in **picture 12** (please ensure the wires are not crushed).
- Route the wiring as original and reconnect the licence plate illuminator using the supplied connector (**item 8**) to the original plug socket, the wiring should be as shown below.

Original wiring colours-----R&G licence plate illuminator wiring colours
 GREEN-----BLACK
 BROWN-----RED

R&G

Unit 1, Shelley's Lane, East Worldham, Alton, Hampshire, GU34 3AQ
 Tel: +44 (0)1420 89007 Fax: +44 (0)1420 87301 www.rg-racing.com Email: info@rg-racing.com



- It is a good idea to check the licence plate illuminator at this stage if illumination fails, please swap the bullet connections around.
- Use the supplied cable ties and self-adhesive clips (**items 9 and 10**) to neaten and tidy the wiring.
- Refit and secure the rear cowl as original.
- Refit the seat as original and licence plate (it may require drilling).
- **IMPORTANT: IF FITTING A FULL-SIZE LICENCE PLATE AND PLACING IT FAR DOWN ON THE LICENCE PLATE HANGER, THERE IS A SMALL CHANCE OF THE LICENCE PLATE HITTING THE BACK WHEEL UNDER HEAVY LOAD AND OVER LARGE BUMPS IN THE ROAD. IT IS YOUR RESPONSIBILITY TO CHECK FOR THIS POSSIBILITY AND TAKE AVOIDING ACTION. FAILURE TO CHECK THIS COULD RESULT IN SERIOUS INJURY.**
- Depending on local laws, attach enclosed reflector (**item 11**) in an appropriate location.
- Retest the licence plate illuminator and all lights before riding.

ISSUE 1 21/05/2021 (NSY)

CONSUMER NOTICE

The catalogue description and any exhibition of samples are only broad indications of the Products and R&G may make design changes which do not diminish their performance or visual appeal and supplying them in such state shall conform to the order. The Buyer acknowledges no representation or warranty (other than as to title) has been given or will apply to the Products other than those in R&G's order or confirmation and the Buyer confirms it has chosen the Products as being of merchantable quality and suitable for its particular purposes. Where R&G fits the Products or undertakes other services it shall exercise reasonable skill and care and rectify any fault free of charge unless the workmanship has been disturbed. The Buyer is responsible for ensuring that the warranty on the motorcycle is not affected by the fitting of the Products. On return of any defective Products R&G shall at its option either supply a replacement or refund the purchase money but shall not be liable if the Products have been modified or used or maintained otherwise than in accordance with R&G's or manufacturer's instructions and good engineering practice or if the defect arises from accident or neglect. Other than identified above and subject to R&G not limiting its liability for causing death and personal injury, it shall not be liable for indirect or consequential loss and otherwise its liability shall be limited to the amounts paid by the Buyer for the Products or the fitting or service concerned. These terms do not affect the Buyer's statutory rights.

R&G RETURNS POLICY (NON-FAULTY GOODS)

Returns must be pre-authorized (if not pre-authorized the return will be rejected). Goods may only be returned direct to us if they were purchased direct from us (customer must prove if necessary). Otherwise to be returned to original vendor. Goods must be in re-sellable condition, in the opinion of R&G. All returns are subject to a 25% restocking and handling fee (25% of the gross value exc. P&P – at the prevailing price at time of purchase). The customer must pay any and all carriage charges. No returns of discontinued products, unless within 14 days of purchase. This policy does not affect your statutory rights and does not refer to faulty goods.

R&G

Unit 1, Shelley's Lane, East Worldham, Alton, Hampshire, GU34 3AQ
Tel: +44 (0)1420 89007 Fax: +44 (0)1420 87301 www.rg-racing.com Email: info@rg-racing.com



**NOTICE DE MONTAGE LP0304BK SUPPORT DE PLAQUE
POUR HONDA CRF300L/CRF300 RALLY 2021-**



CE KIT CONTIENT LES ARTICLES ILLUSTRÉS ET ÉTIQUETÉS SUR LA PAGE.

CERTAINES PARTIES PEUVENT ÊTRE PRÉSENTES UNIQUEMENT POUR LA CLARTE DES INSTRUCTIONS.

NE PAS PROCÉDER AU MONTAGE TANT QUE VOUS N'ÊTES PAS SÛR QUE TOUTES LES PIÈCES SOIENT PRÉSENTES.

VEUILLEZ LIRE TOUTES LES INSTRUCTIONS AVANT DE CONTINUER.

EN CAS DE DOUTE LORS DU MONTAGE DE NOS PRODUITS, CONSULTEZ UN DE NOS REVENDEURS OU FAITES APPEL À UN TECHNICIEN QUALIFIÉ.

VEUILLEZ NOTER QUE LA FAÇON DONT LE KIT EST EMBALLÉ NE REPRÉSENTE PAS NECESSAIREMENT LA MANIÈRE DE LE MONTER SUR LA MOTO.

SI DES RONDELLES EN CAOUTCHOUC SONT UTILISÉES POUR MAINTENIR LES COMPOSANTS SUR LES BOULONS, ELLES PEUVENT ÊTRE JETÉES.

NOTICE DISPONIBLE AU TÉLÉCHARGEMENT SUR :

WWW.RG-RACING.COM



<u>OUTILS REQUIS</u>	<u>VALEURS DE SERRAGE</u>
<ul style="list-style-type: none"> • Clés Allen. • Coupe câble/ Pincés électriques. • Un peu d'adhésif 	<p>M4 BOULON = 8Nm</p> <p>M5 BOULON = 12Nm</p> <p>M6 BOULON = 15Nm</p> <p>M8 BOULON = 20Nm</p> <p>M10 BOULON = 40Nm</p> <p>M12 BOULON = 40Nm</p>

ARTICLE NO.	LÉGENDE	QTÉ
ARTICLE 1	SUPPORT DE PLAQUE (TB0304)	1
ARTICLE 2	PASSE FIL (RB0008)	1
ARTICLE 3	M6 x 20mm BOULONS	2
ARTICLE 4	M6 RONDELLES	3
ARTICLE 5	M6 x 15mm BOULON	1
ARTICLE 6	ASSEMBLAGE FEU DE PLAQUE(LA0002)	1
ARTICLE 7	180mm LONGUEUR DE MANCHON THERMO RÉTRACTABLE	1
ARTICLE 8	R&G CONNECTEUR DE FEU DE PLAQUE (CON0053)	1
ARTICLE 9	CLIPS CÂBLE (CLIP 1)	2
ARTICLE 10	2.5mm COLLIERS DE SERRAGE (CT0220)	4
ARTICLE 11	RÉFLECTEUR (REFL 3)	1

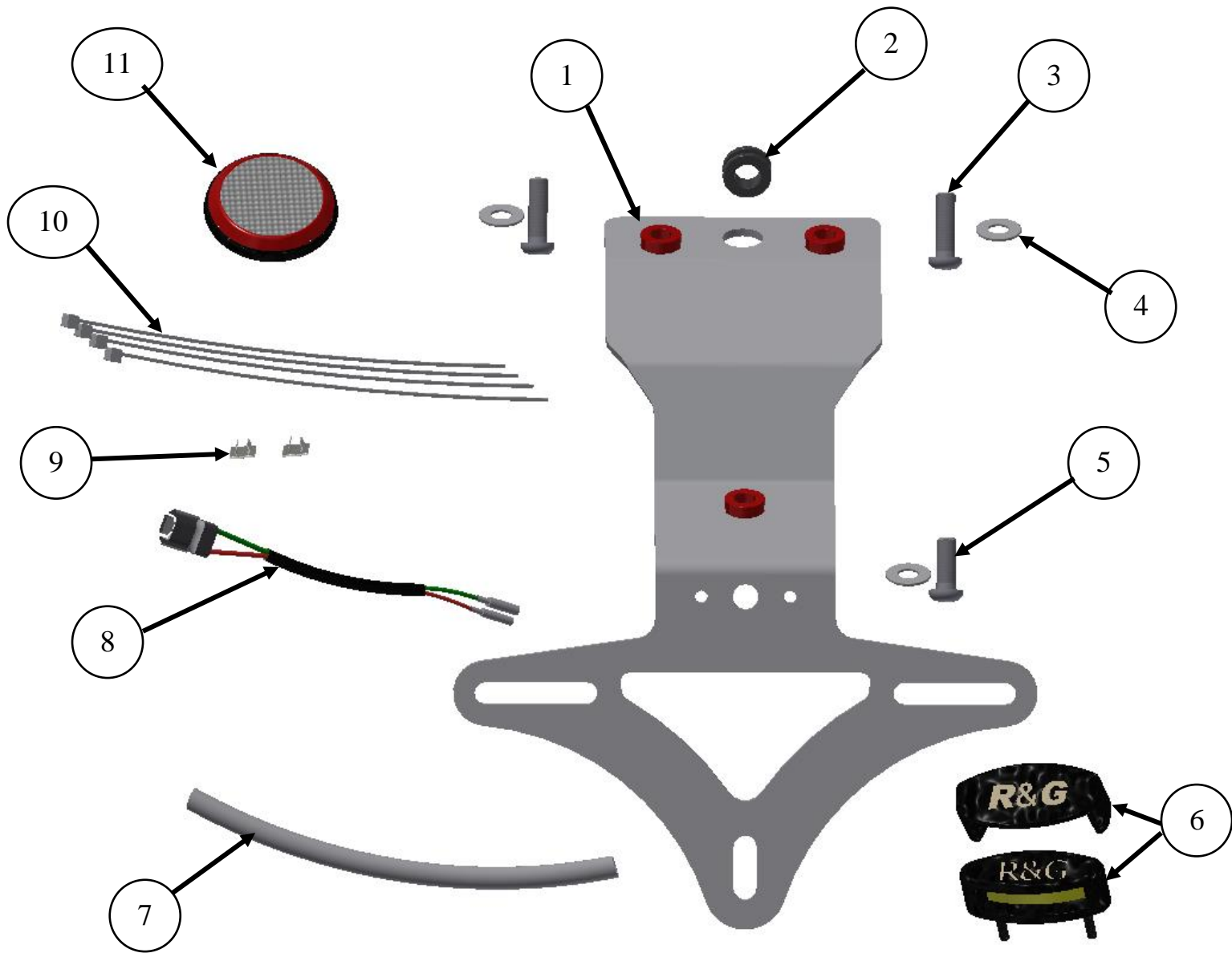


SCHÉMA D'ENSEMBLE



PHOTO 1



PHOTO 2



PHOTO 3



PHOTO 4



PHOTO 5



PHOTO 6

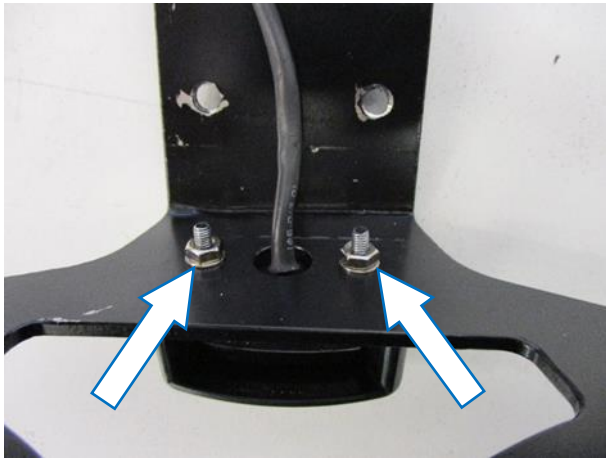


PHOTO 7



PHOTO 8

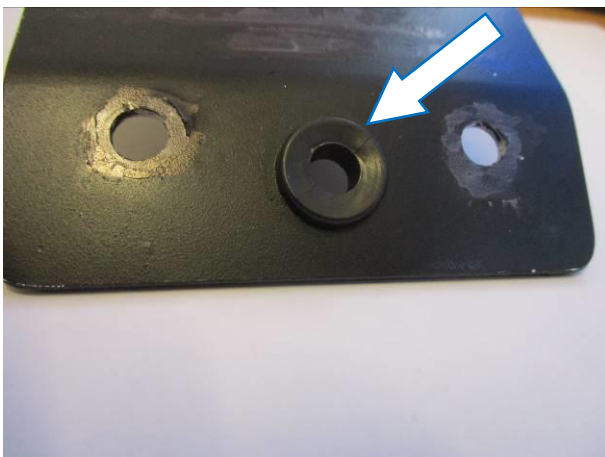


PHOTO 9

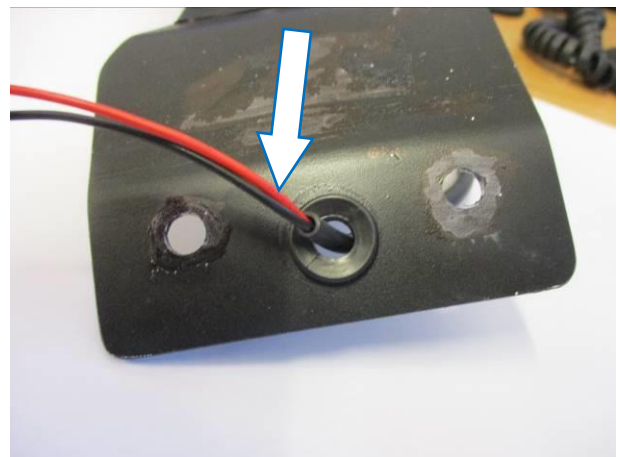


PHOTO 10

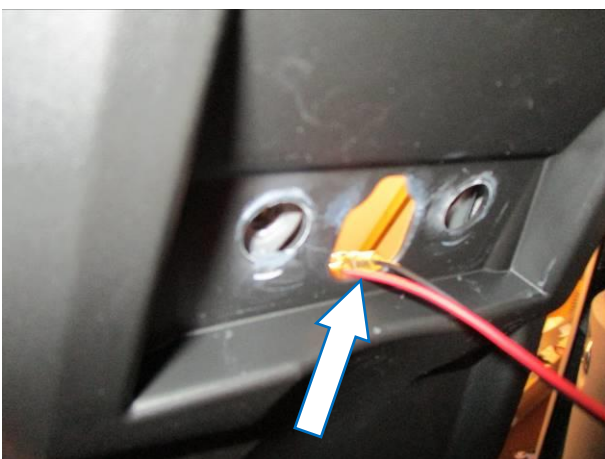


PHOTO 11



PHOTO 12

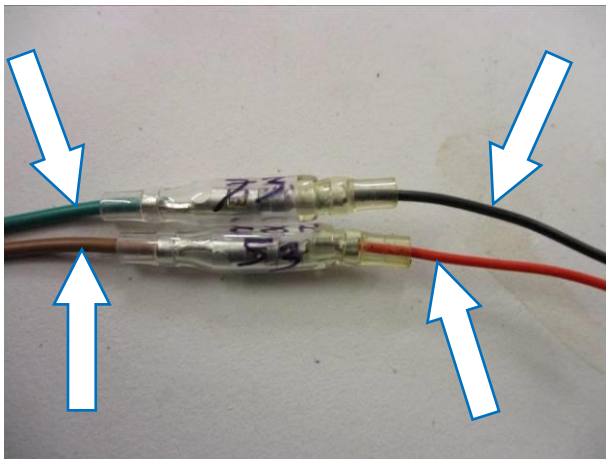


PHOTO 13



PHOTO 14

NOTICE DE MONTAGE

- Pour installer le support arrière R&G, retirez d'abord les deux crochets / boulons élastiques avant indiqués par les flèches sur les photos 1 et 2, puis retirez le siège.
- Retirez les deux crochets / boulons élastiques vers l'arrière indiqués sur les photos 3 et 4, puis retirez le capot arrière pour permettre l'accès au câblage.
- Tracez le câblage de feu de plaque d'immatriculation et débranchez la prise de câblage comme indiqué sur la photo 5.
- Retirez les trois boulons indiqués par la flèche sur la photo 6 et retirez soigneusement le support de plaque d'immatriculation d'origine tout en faisant passer le câblage à travers le trou du plateau inférieur.
- Faites passer les fils du nouveau feu de plaque d'immatriculation R&G (article 6) à travers le trou central du nouveau support de plaque d'immatriculation (article 1) comme indiqué sur les photos 7 et 8.
- Fixez à l'aide des rondelles et de l'écrou fournis comme indiqué sur la photo 7.
- Montez la protection de feu et utilisez une petite quantité d'adhésif pour le maintenir en position comme indiqué sur la photo 8.
- Montez une longueur de thermorétractable (article 7) sur les fils et chauffez doucement pour rétreindre le manchon.
- Insérez le passe-fil en caoutchouc (article 2) dans le trou central comme indiqué sur la photo 9, puis faites passer le câblage à travers le passe-fil comme indiqué sur la photo 10.
- Présentez le nouveau support de plaque d'immatriculation en position sur le plateau inférieur tout en faisant passer le câblage à travers la fente du plateau inférieur comme indiqué sur la photo 11 et fixez-le à l'aide des deux boulons plus longs avec rondelles (articles 3 et 4) dans la position indiquée dans photo 12 (illustré avec des flèches pleines), utilisez le boulon le plus court avec rondelle (articles 5 et 4) à travers le trou le plus à l'arrière comme indiqué sur la photo 12 (veuillez vous assurer que les fils ne soient pas écrasés).
- Acheminez le câblage comme d'origine et rebranchez le feu de plaque d'immatriculation à l'aide du connecteur fourni (article 8) à la prise d'origine, le câblage doit être comme indiqué ci-dessous:

R&G

Unit 1, Shelley's Lane, East Worldham, Alton, Hampshire, GU34 3AQ

Tel: +44 (0)1420 89007 Fax: +44 (0)1420 87301 www.rg-racing.com Email: info@rg-racing.com



Couleurs de câblage d'origine ----- Couleurs de câblage de feu de plaque d'immatriculation R&G :

VERT -----NOIR

MARRON ----- ROUGE

- Il est judicieux de vérifier le feu de plaque d'immatriculation à ce stade, si l'éclairage échoue, veuillez permuter les connecteurs.
- Utilisez les serre-câbles et les clips autocollants fournis (articles 9 et 10) pour ranger le câblage.
- Remontez et fixez le capot de siège arrière comme d'origine.
- Reposer le siège comme d'origine et la plaque d'immatriculation (cela peut nécessiter un perçage).
- **IMPORTANT: SI VOUS POSEZ UNE PLAQUE D'IMMATRICULATION DE GRANDE TAILLE ET LA PLACEZ LOIN SUR LE SUPPORT DE PLAQUE D'IMMATRICULATION, IL Y A UN PEU DE CHANCE QUE LA PLAQUE D'IMMATRICULATION HEURTE LA ROUE ARRIÈRE SOUS FORTE CHARGE ET EN CAS DE GROS CHOCS SUR LA ROUTE. IL EST DE VOTRE RESPONSABILITÉ DE VÉRIFIER CETTE POSSIBILITÉ ET DE PRENDRE DES MESURES DE PRÉCAUTION. NE PAS VÉRIFIER CELA POURRAIT ENTRAÎNER DES BLESSURES GRAVES.**
- En fonction des lois locales, fixez le réflecteur fourni (article 11) à un endroit approprié.
- Testez le feu de plaque d'immatriculation et tous les feux avant de rouler.

ISSUE 1 21/05/2021 (NSY)

CONSUMER NOTICE

The catalogue description and any exhibition of samples are only broad indications of the Products and R&G may make design changes which do not diminish their performance or visual appeal and supplying them in such state shall conform to the order. The Buyer acknowledges no representation or warranty (other than as to title) has been given or will apply to the Products other than those in R&G's order or confirmation and the Buyer confirms it has chosen the Products as being of merchantable quality and suitable for its particular purposes. Where R&G fits the Products or undertakes other services it shall exercise reasonable skill and care and rectify any fault free of charge unless the workmanship has been disturbed. The Buyer is responsible for ensuring that the warranty on the motorcycle is not affected by the fitting of the Products. On return of any defective Products R&G shall at its option either supply a replacement or refund the purchase money but shall not be liable if the Products have been modified or used or maintained otherwise than in accordance with R&G's or manufacturer's instructions and good engineering practice or if the defect arises from accident or neglect. Other than identified above and subject to R&G not limiting its liability for causing death and personal injury, it shall not be liable for indirect or consequential loss and otherwise its liability shall be limited to the amounts paid by the Buyer for the Products or the fitting or service concerned. These terms do not affect the Buyer's statutory rights.

R&G RETURNS POLICY (NON-FAULTY GOODS)

Returns must be pre-authorized (if not pre-authorized the return will be rejected). Goods may only be returned direct to us if they were purchased direct from us (customer must prove if necessary). Otherwise to be returned to original vendor. Goods must be in re-sellable condition, in the opinion of R&G. All returns are subject to a 25% restocking and handling fee (25% of the gross value exc. P&P – at the prevailing price at time of purchase). The customer must pay any and all carriage charges. No returns of discontinued products, unless within 14 days of purchase. This policy does not affect your statutory rights and does not refer to faulty goods.

R&G

Unit 1, Shelley's Lane, East Worldham, Alton, Hampshire, GU34 3AQ

Tel: +44 (0)1420 89007 Fax: +44 (0)1420 87301 www.rg-racing.com Email: info@rg-racing.com



**MONTAGEANLEITUNG FÜR LP0304BK KENNZEICHENHALTER
FÜR HONDA CRF300L/CRF300 RALLY 2021-**



**ALLE KIT-TEILE SIND AUF DEN NACHFOLGENDEN SEITEN ABGEBILDET UND
GEKENNZEICHNET.**

DIE ABGEBILDETEN TEILE DIENEN LEDIGLICH ZUR ERKLÄRUNG.

ÜBERPRÜFEN SIE ZUERST, DASS ALLE TEILE VORHANDEN SIND.

LESEN SIE DIE MONTAGEANLEITUNG KOMPLETT DURCH, BEVOR SIE ANFANGEN.

**WENN SIE BEI DER MONTAGE DIESES PRODUKTES UNSICHER SIND,
BITTE EINEN UNSERER HÄNDLER KONTAKTIEREN ODER DAS KIT VON
EINEM QUALIFIZIERTEN ZWEIRAD-MECHANIKER MONTIEREN LASSEN.**

DIE VERPACKUNG DER TEILE STELLT NICHT DIE REIHENFOLGE DER MONTAGE DAR.

HINWEIS FÜR KITS MIT PLASTIKUNTERLEGSscheIBEN AN DEN SCHRAUBEN –
DIESE PLASTIK-UNTERLEGSscheIBEN WERDEN NICHT FÜR DEN EINBAU BENÖTIGT.

**EINE DIGITALE VERSION DIESER MONTAGEANLEITUNG KANN AUF
FOLGENDER SEITE HERUNTERGELADEN WERDEN:**

WWW.RG-RACING.COM

R&G

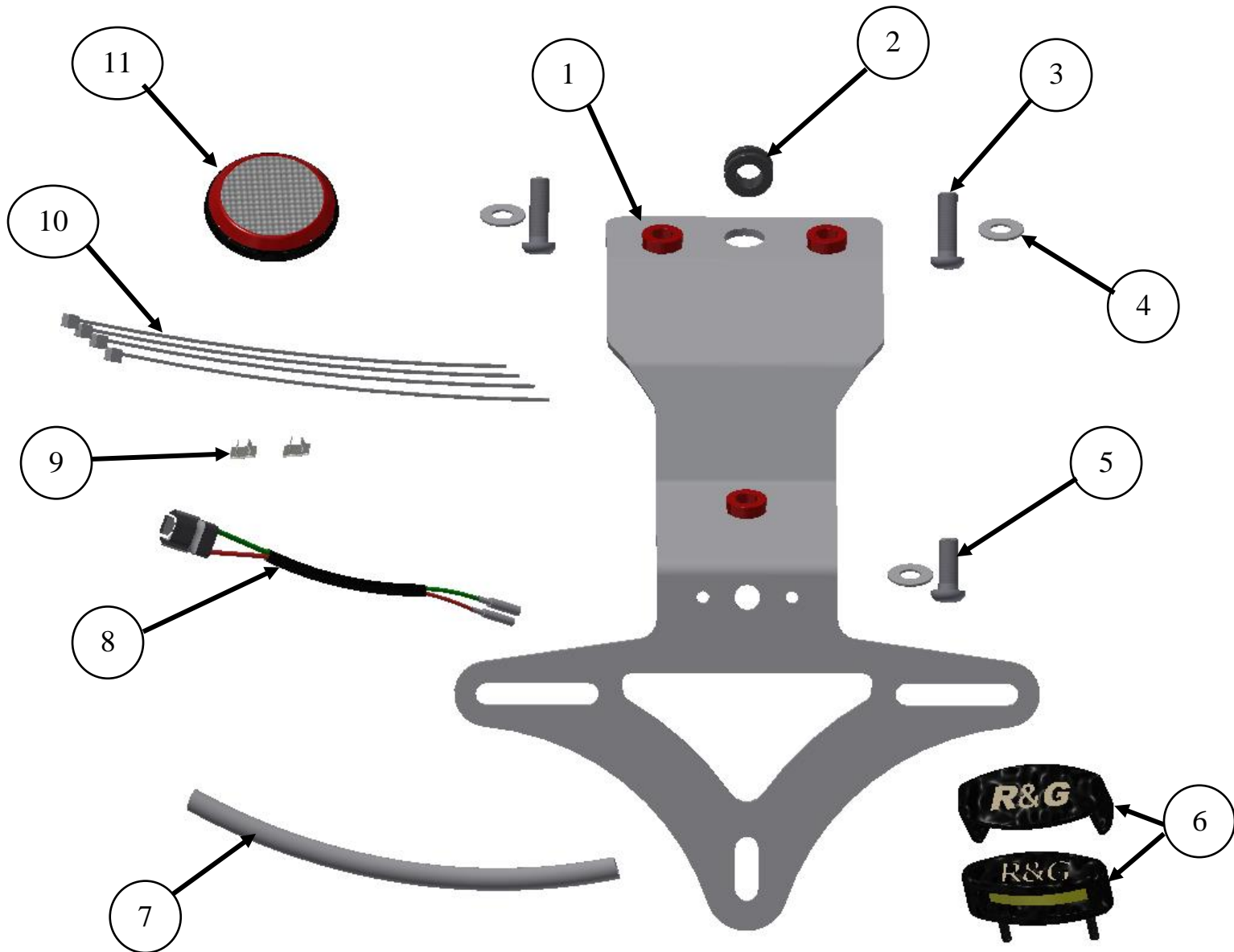
Unit 1, Shelley's Lane, East Worldham, Alton, Hampshire, GU34 3AQ

Tel: +44 (0)1420 89007 Fax: +44 (0)1420 87301 www.rg-racing.com Email: info@rg-racing.com



SIE BENÖTIGEN FOLGENDES WERKZEUG	ALLGEM. ANZUGSDREHMOMENT
<ul style="list-style-type: none"> • Satz Inbusschlüssel • Seitenschneider / Elektroniker Zange • etwas Sekundenkleber 	<p>M4 SCHRAUBE = 8Nm</p> <p>M5 SCHRAUBE = 12Nm</p> <p>M6 SCHRAUBE = 15Nm</p> <p>M8 SCHRAUBE = 20Nm</p> <p>M10 SCHRAUBE = 40Nm</p> <p>M12 SCHRAUBE = 40Nm</p>

ARTIKEL NR.	LIEFERUMFANG	MENGE
ARTIKEL 1	KENNZEICHENHALTER (TB0304)	1
ARTIKEL 2	GUMMITÜLLE FÜR DIE KABEL (RB0008)	1
ARTIKEL 3	M6 x 20mm INBUSSSCHRAUBE	2
ARTIKEL 4	M6 UNTERLEGSCHIEBE	3
ARTIKEL 5	M6 x 15mm INBUSSSCHRAUBE	1
ARTIKEL 6	KENNZEICHENBELEUCHTUNG (LA0002)	1
ARTIKEL 7	180mm SCHRUMPFSCHLAUCH	1
ARTIKEL 8	R&G KENNZEICHENBELEUCHTUNG - VERBINDUNG (CON0053)	1
ARTIKEL 9	KABELCLIPS (CLIP 1)	2
ARTIKEL 10	2.5mm KABELBINDER (CT0220)	4
ARTIKEL 11	RÜCKSTRAHLER (REFL 3)	1



Zeichnung - Zusammenbau



ABBILDUNG 1



ABBILDUNG 2



ABBILDUNG 3



ABBILDUNG 4



ABBILDUNG 5



ABBILDUNG 6

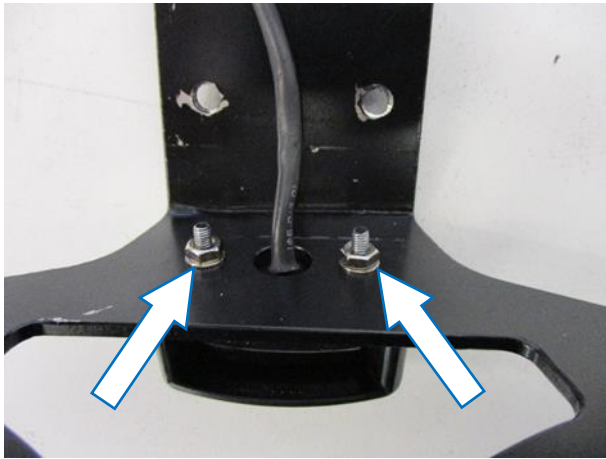


ABBILDUNG 7



ABBILDUNG 8

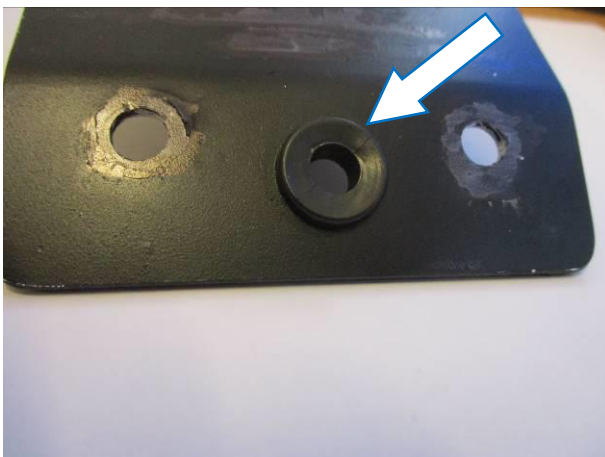


ABBILDUNG 9

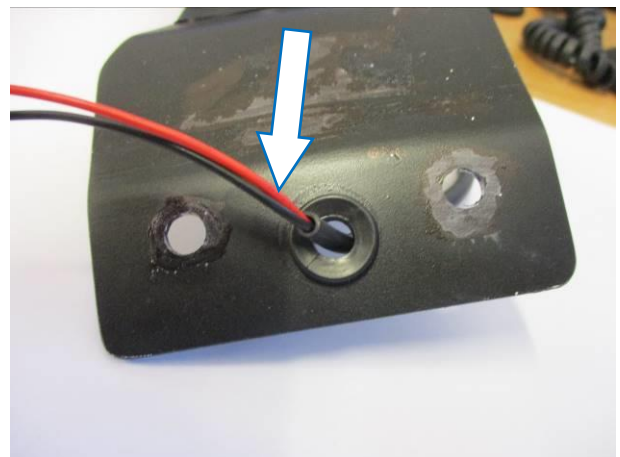


ABBILDUNG 10

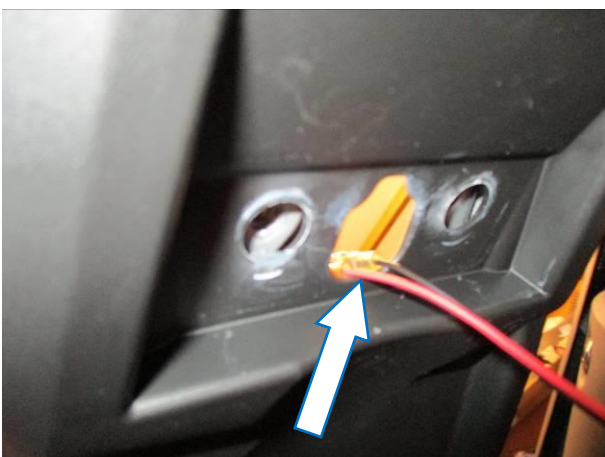


ABBILDUNG 11



ABBILDUNG 12

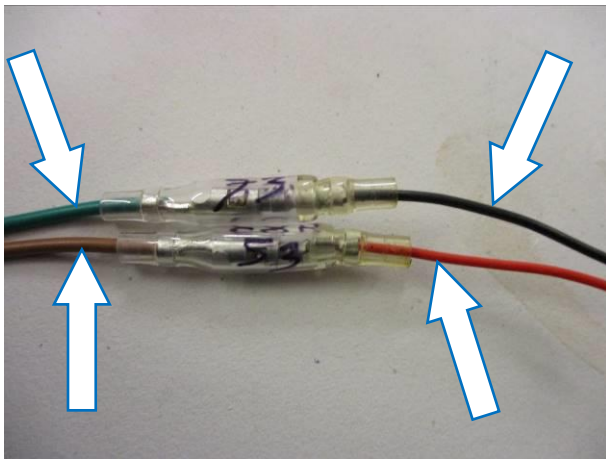


ABBILDUNG 13



ABBILDUNG 14

MONTAGEANLEITUNG

- Um den R&G Kennzeichenhalter montieren zu können, entfernen Sie zuerst die zwei vorderen Spannhaken/Schrauben, die in den **Abbildungen 1 und 2** gekennzeichnet sind, dann entfernen Sie den Sitz.
- Entfernen Sie die zwei hinteren Spannhaken/Schrauben, die in den **Abbildungen 3 und 4** abgebildet sind, dann entfernen Sie die Heckverkleidung, um Zugang zu den Kabeln zu ermöglichen.
- Trennen Sie den Steckverbinder für die Kabel der Kennzeichenbeleuchtung wie in **Abbildung 5** abgebildet.
- Entfernen Sie die drei Schrauben die in **Abbildung 6** markiert sind und entfernen Sie vorsichtig den Originalkennzeichenhalter während Sie die Kabel durch die Öffnung in der unteren Abdeckung führen.
- Führen Sie die Kabel der neuen R&G Kennzeichenbeleuchtung (**Artikel 6**) durch die mittlere Öffnung des neuen Kennzeichenhalters (**Artikel 1**) wie in den **Abbildungen 7 und 8** abgebildet.
- Mit den Unterlegscheiben und Muttern vom Kit befestigen wie in **Abbildung 7** abgebildet.
- Montieren Sie die Abdeckung für die Beleuchtung und benutzen Sie etwas Sekundenkleber, um sie in Position zu befestigen (siehe **Abbildung 8**).
- Eine Länge Schrumpfschlauch (**Artikel 7**) an den Kabeln anbringen und vorsichtig erwärmen, um den Schrumpfschlauch passend zu fixieren.
- Montieren Sie die Gummitülle für die Kabel (**Artikel 2**) an der mittleren Öffnung wie in **Abbildung 9** abgebildet und führen Sie anschließend die Kabel durch die Gummitülle wie in **Abbildung 10** abgebildet.
- Den neuen Kennzeichenhalter an der unteren Abdeckung positionieren und die Kabel durch den Schlitz in der unteren Abdeckung fädeln wie in **Abbildung 11** abgebildet. Mit den zwei längeren Schrauben und den Unterlegscheiben vom Kit (**Artikel 3 und 4**) an den vorgesehenen Positionen (siehe **Abbildung 12** – mit Pfeilen markiert) befestigen, die kürzere Schraube mit der Unterlegscheibe (**Artikel 5 und 4**) an der hintersten Öffnung anbringen wie in **Abbildung 12** abgebildet (bitte darauf achten, dass die Kabel nicht gequetscht sind).

R&G

Unit 1, Shelley's Lane, East Worldham, Alton, Hampshire, GU34 3AQ

Tel: +44 (0)1420 89007 Fax: +44 (0)1420 87301 www.rg-racing.com Email: info@rg-racing.com



- Die Kabel wie ursprünglich verlegen und die Kennzeichenbeleuchtung mittels des mitgelieferten Verbinders (**Artikel 8**) mit dem original Steckverbinder wieder verbinden wie folgt:

Farben Originalkabel -----Farben Kabel R&G Kennzeichenbeleuchtung
 GRÜN-----SCHWARZ
 BRAUN-----ROT

- Es empfiehlt sich nun, die Funktion der Kennzeichenbeleuchtung und Blinker zu prüfen. Falls die Beleuchtung nicht funktioniert, tauschen Sie die Verbinder untereinander.
- Benutzen Sie die mitgelieferten Kabelbinder und selbstklebenden Clips vom Kit (**Artikel 9** und **10**), um die Kabel ordentlich zu sichern.
- Montieren Sie das Verkleidungsteil um den Sitz wie ursprünglich wieder.
- Montieren Sie den Sitz wie ursprünglich wieder und montieren Sie das amtliche Kennzeichen (Bohrungen im Kennzeichen evtl. notwendig).
- **WICHTIG: WENN EIN GROSSES KENNZEICHEN ZU WEIT NACH UNTEN MONTIERT WIRD, BESTEHT BEI SCHWERER LAST ODER DURCH GROSSE BODENWELLEN EIN GERINGES RISIKO, DASS DAS KENNZEICHEN AN DAS HINTERRAD STOSSEN KANN. ES LIEGT IN IHRER VERANTWORTUNG DIES ZU ÜBERPRÜFEN UND, WENN NOTWENDIG, VORZUBEUGENDE MASSNAHMEN ZU ERGREIFEN. DIE NICHTBEACHTUNG DIESES SICHERHEITSHINWEIS KANN ZU SCHWEREN VERLETZUNGEN FÜHREN.**
- Entsprechend der gesetzlichen Vorschriften, den mitgelieferten Rückstrahler (**Artikel 11**) an die dafür vorgesehene Stelle anbringen.
- Überprüfen Sie die Funktion der Beleuchtung (Blinker und Kennzeichenhalter) vor Gebrauch des Fahrzeuges.

AUSGABE 1 21/05/2021 (NSY)

CONSUMER NOTICE

The catalogue description and any exhibition of samples are only broad indications of the Products and R&G may make design changes which do not diminish their performance or visual appeal and supplying them in such state shall conform to the order. The Buyer acknowledges no representation or warranty (other than as to title) has been given or will apply to the Products other than those in R&G's order or confirmation and the Buyer confirms it has chosen the Products as being of merchantable quality and suitable for its particular purposes. Where R&G fits the Products or undertakes other services it shall exercise reasonable skill and care and rectify any fault free of charge unless the workmanship has been disturbed. The Buyer is responsible for ensuring that the warranty on the motorcycle is not affected by the fitting of the Products. On return of any defective Products R&G shall at its option either supply a replacement or refund the purchase money but shall not be liable if the Products have been modified or used or maintained otherwise than in accordance with R&G's or manufacturer's instructions and good engineering practice or if the defect arises from accident or neglect. Other than identified above and subject to R&G not limiting its liability for causing death and personal injury, it shall not be liable for indirect or consequential loss and otherwise its liability shall be limited to the amounts paid by the Buyer for the Products or the fitting or service concerned. These terms do not affect the Buyer's statutory rights.

R&G RETURNS POLICY (NON-FAULTY GOODS)

Returns must be pre-authorized (if not pre-authorized the return will be rejected). Goods may only be returned direct to us if they were purchased direct from us (customer must prove if necessary). Otherwise to be returned to original vendor. Goods must be in re-sellable condition, in the opinion of R&G. All returns are subject to a 25% restocking and handling fee (25% of the gross value exc.

R&G

Unit 1, Shelley's Lane, East Worldham, Alton, Hampshire, GU34 3AQ
 Tel: +44 (0)1420 89007 Fax: +44 (0)1420 87301 www.rg-racing.com Email: info@rg-racing.com



P&P – at the prevailing price at time of purchase). The customer must pay any and all carriage charges. No returns of discontinued products, unless within 14 days of purchase. This policy does not affect your statutory rights and does not refer to faulty goods.