



FITTING INSTRUCTIONS FOR LP0319BK
LICENSE PLATE BRACKET
HONDA MSX 125 GROM 2021-



THIS KIT CONTAINS THE ITEMS PICTURED AND LABELLED OVER PAGE.

SOME PARTS MAY BE SHOWN FOR CLARITY OF INSTRUCTIONS ONLY.

DO NOT PROCEED UNTIL YOU ARE SURE ALL PARTS ARE PRESENT.

PLEASE READ ALL INSTRUCTIONS BEFORE PROCEEDING.

**IF IN ANY DOUBT WHEN FITTING OUR PRODUCTS, CONSULT ONE OF OUR DEALERS
OR HAVE FITTED BY A QUALIFIED TECHNICIAN.**

PLEASE NOTE THAT THE WAY THE KIT IS PACKED DOES NOT NECESSARILY REPRESENT THE WAY OF
MOUNTING TO THE BIKE.

IN THE EVENT OF RUBBER WASHERS BEING USED TO HOLD COMPONENTS ONTO BOLTS,
THESE RUBBER WASHERS CAN BE THROWN AWAY.

DIGITAL COPIES OF THESE INSTRUCTIONS ARE AVAILABLE FROM:

WWW.RG-RACING.COM

Racing Technique Ltd T/A R&G
Unit 1, Shelley's Lane, East Worldham, Alton, Hampshire, GU34 3AQ
Tel: +44 (0)1420 89007 Fax: +44 (0)1420 87301 www.rg-racing.com Email: info@rg-racing.com



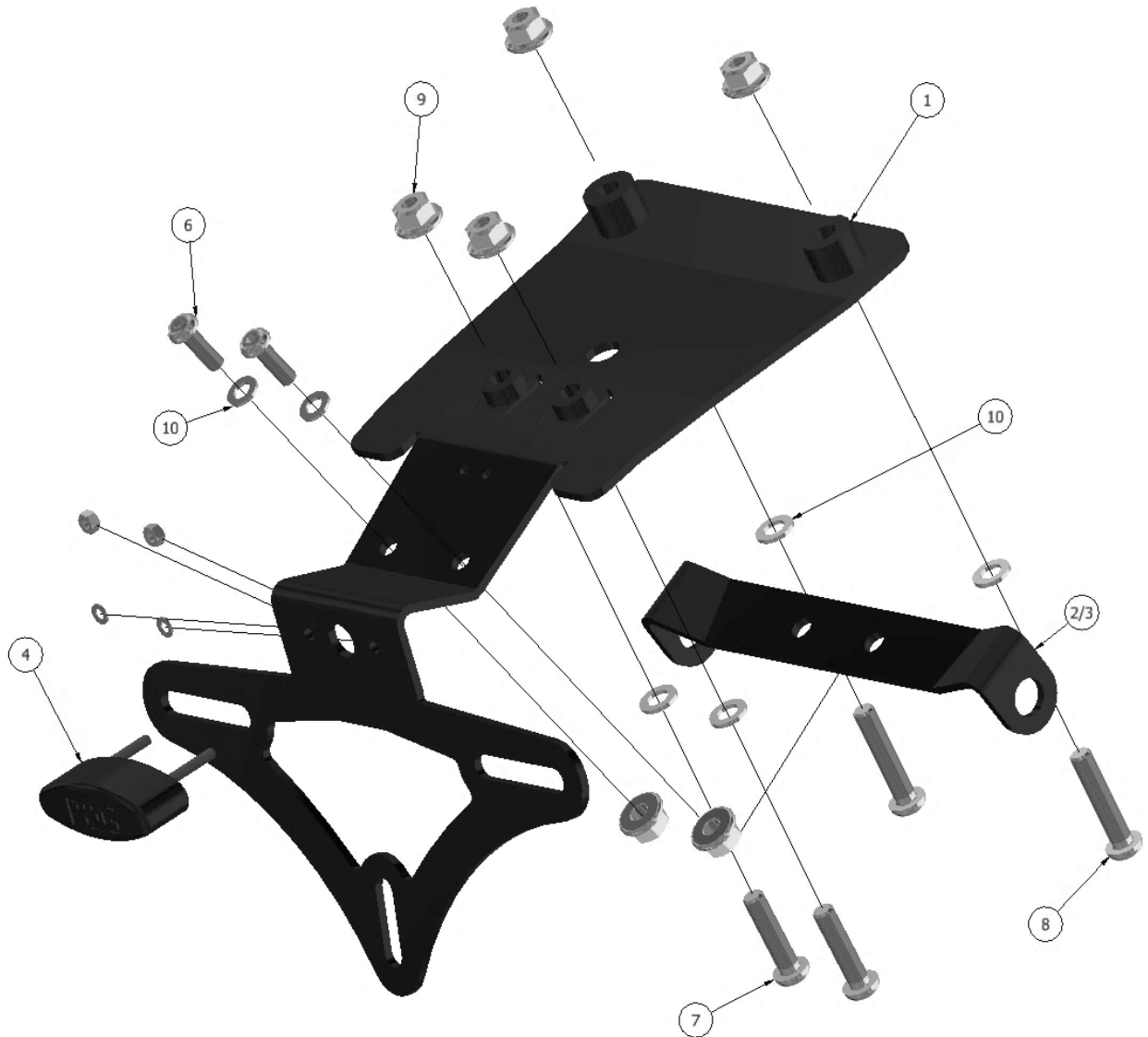
<u>TOOLS REQUIRED</u>	<u>GENERAL TORQUE SETTINGS</u>
<ul style="list-style-type: none"> • 6, 8, 10 & 12mm SPANNERS OR SOCKETS • ALLEN KEY SET • SMALL FLAT HEAD SCREWDRIVER 	M4 BOLT = 8Nm M5 BOLT = 12Nm M6 BOLT = 15Nm M8 BOLT = 20Nm M10 BOLT = 40Nm M12 BOLT = 40Nm

LEGEND

ITEM NO.	PART NUMBER	DESCRIPTION	QTY
ITEM 1	TB0319	LICENSE PLATE BRACKET	1
ITEM 2	MP0260	MINI INDICATOR BRACKET	1
ITEM 3	MP0261	OEM INDICATOR BRACKET	1
ITEM 4	LA0002	NUMBER PLATE LIGHT	1
ITEM 5	IWC0001	INDICATOR WIRING COVER	2
ITEM 6	M6x1.0x16	BUTTON HEAD BOLT (INDICATOR BRACKET)	2
ITEM 7	M6x1.0x25	BUTTON HEAD BOLT (REAR MOUNTING BOLTS)	2
ITEM 8	M6x1.0x30	BUTTON HEAD BOLT (FRONT MOUNTING BOLTS)	2
ITEM 9	M6x1.0	M6x1.00 - NYLOC NUT	6
ITEM 10	M6x12mm	WASHER	12
ITEM 11	CON0004	NUMBER PLATE LIGHT CONNECTOR	1
ITEM 12	CT100	2.5x100mm CABLE TIES	2
ITEM 13	666-896/23	230mm HEAT SHRINK	3
ITEM 14	CLIP 1	SELF ADHESIVE CLIPS	2



EXPLODED VIEW





FITTING PICTURES

PICTURE 1



PICTURE 2



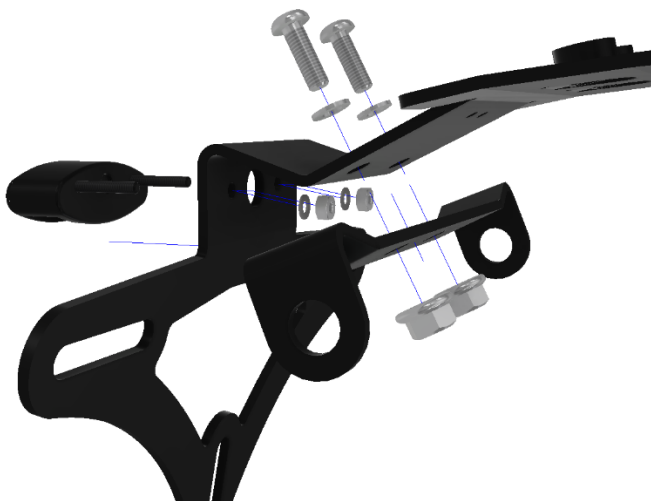
PICTURE 3



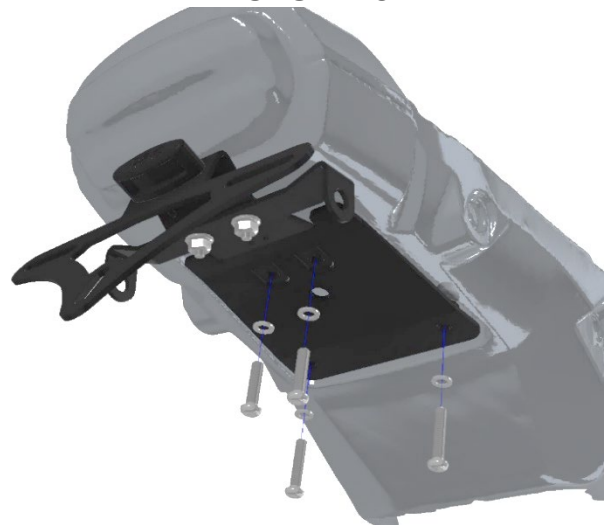
PICTURE 4



PICTURE 5

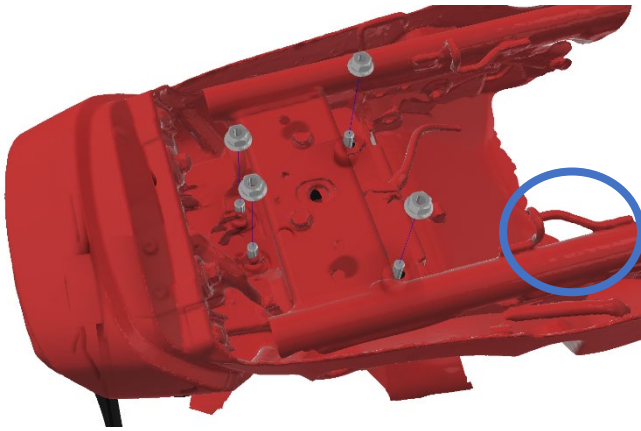


PICTURE 6





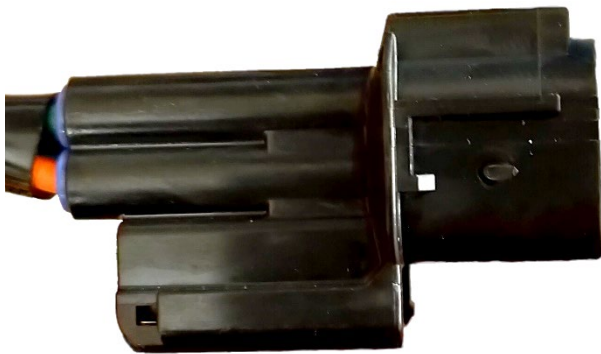
PICTURE 7



PICTURE 8



PICTURE 9



PICTURE 10



PICTURE 11





FITTING INSTRUCTIONS

Disassembly Of The Standard Tail Unit

- Firstly, remove the seat unit from the motorcycle.
- Using a small flat head screwdriver, carefully un-plug the OEM lighting connectors located in the blue circled area in **Picture 7**, the connectors should look similar to **Picture 9**.
- Using a 4mm allen key and 10mm socket, remove the four bolts circled red in **Picture 10**.
- Once the OEM bolts have been removed the tail unit can be removed.

If Re-Using OEM indicators

- Remove the bolts circled in red from the tail unit shown in **Picture 11**.
- Disconnect the bullet connectors circled in green (**Picture 11**).
- Remove the OEM indicators from the assembly.
- Remove and keep for later use the OEM indicator and plate light connectors.

Preparing The Assembly

- Please follow the exploded assembly diagram on **Page 3**.
- Firstly, prepare the wiring on the licence plate light (**Item 4**) & indicators (if mini-indicators are being fitted instead of OEM).
- **For 2025- models**, the license plate light will need to be cut off and the CON0004 (**Item 11**, **Picture 4**) attached to the OEM wiring harness in order to attach the R&G license plate light (**Item 4**).
- Cut two small sections of heat shrink (**Item 13**) roughly 10-15mm in length for use later.

If fitting micro indicators

- Push the wires through the supplied heat shrink and apply heat with a heat gun or lighter until it can no longer be moved freely (**Picture 1**).
- As shown in **Picture 2** pass the wires through the supplied OEM indicator bracket (**Item 3**) followed by a flange nut (which are supplied separately with micro indicators), then the indicator wiring cover (**Item 10**).
- Once the wiring cover is in position push over the small piece of heat shrink that was trimmed off previously and heat until the wiring cover can no longer be moved. (**Picture 3**)
- Then push the wires through the hole in the centre of the licence plate bracket.
- If the micro indicators that are being used do not have bullet connectors, please use the supplied bullet connectors (**Item 11**, **Picture 4**) which can be connected to the cables previously removed from the OEM tail unit.

If fitting OEM indicators

- Insert the indicators through the supplied OEM indicator bracket (**Item 3**) and tighten the nut that was also removed from the OEM tail unit.

- Following the diagram in **Picture 5**, insert the threaded bars of the supplied **R&G** number plate light (**Item 4**) into the licence plate bracket, then add the washers and nuts included with the licence plate light and tighten down until secure.
- Bolt together the indicator bracket (Either OEM (**Item 3**) or Mini indicator bracket (**Item 2**)) with the smaller 16mm button head bolts (**Item 6**) with 2X washers and nyloc nuts.
- Then push the cables through the hole in the centre of the licence plate bracket.

Fitting The R&G Tail Tidy

- Following the exploded diagram on **Page 3**, place washers over the remaining four bolts.

Racing Technique Ltd T/A R&G

Unit 1, Shelley's Lane, East Worldham, Alton, Hampshire, GU34 3AQ

Tel: +44 (0)1420 89007 Fax: +44 (0)1420 87301 www.rg-racing.com Email: info@rg-racing.com



- Push the 30mm button heads bolts (**Item 8**) through the front mounting points of the bracket.
- Then the smaller 25mm button head bolts (**Item 7**) can be pushed through the rear mounting points.
- The assembly can then be offered up to the motorcycle's undertray with the threaded ends of the bolts being pushed through the undertray. (**Picture 6**)
- Making sure to thread the cables through the hole in the motorcycle's undertray.
- Once through, the remaining nyloc nuts can be hand tightened onto the protruding bolts to hold the assembly in place.
- Using a 4mm allen key and a 10mm socket, tighten each bolt until secure
- Re-connect the OEM wiring that was previously removed from the standard tail unit, connecting the indicators and plate light's bullet connectors with the standard wiring.
- Tidy the cables using the supplied cable ties (**Item 12**) and self-adhesive clips (**Item 14**) so they are out of sight and will not get caught on other parts.
- Once connected, please switch on the ignition and test the function of the indicators and number plate light, ensuring that the indicators are flashing on the correct side.

IMPORTANT:

IF FITTING A FULL-SIZE LICENCE PLATE AND PLACING IT FAR DOWN ON THE LICENCE PLATE HANGER, THERE IS A SMALL CHANCE OF THE LICENCE PLATE HITTING THE BACK WHEEL UNDER HEAVY LOAD AND OVER LARGE BUMPS IN THE ROAD. IT IS YOUR RESPONSIBILITY TO CHECK FOR THIS POSSIBILITY AND TAKE AVOIDING ACTION. FAILURE TO CHECK THIS COULD RESULT IN SERIOUS INJURY.

ISSUE 2 – 11/04/2025 (MH)

CONSUMER NOTICE

The catalogue description and any exhibition of samples are only broad indications of the Products and R&G may make design changes which do not diminish their performance or visual appeal and supplying them in such state shall conform to the order. The Buyer acknowledges no representation or warranty (other than as to title) has been given or will apply to the Products other than those in R&G's order or confirmation and the Buyer confirms it has chosen the Products as being of merchantable quality and suitable for its particular purposes. Where R&G fits the Products or undertakes other services it shall exercise reasonable skill and care and rectify any fault free of charge unless the workmanship has been disturbed. The Buyer is responsible for ensuring that the warranty on the motorcycle is not affected by the fitting of the Products. On return of any defective Products R&G shall at its option either supply a replacement or refund the purchase money but shall not be liable if the Products have been modified or used or maintained otherwise than in accordance with R&G's or manufacturer's instructions and good engineering practice or if the defect arises from accident or neglect. Other than identified above and subject to R&G not limiting its liability for causing death and personal injury, it shall not be liable for indirect or consequential loss and otherwise its liability shall be limited to the amounts paid by the Buyer for the Products or the fitting or service concerned. These terms do not affect the Buyer's statutory rights.

R&G RACING RETURNS POLICY (NON-FAULTY GOODS)

Returns must be pre-authorized (if not pre-authorized the return will be rejected). Goods may only be returned direct to us if they were purchased direct from us (customer must prove if necessary). Otherwise to be returned to original vendor. Goods must be in re-sellable condition, in the opinion of R&G Racing. All returns are subject to a 25% restocking and handling fee (25% of the gross value exc. P&P – at the prevailing price at time of purchase). The customer must pay any and all carriage charges. No returns of discontinued products, unless within 14 days of purchase. This policy does not affect your statutory rights and does not refer to faulty goods.

Racing Technique Ltd T/A R&G

Unit 1, Shelley's Lane, East Worldham, Alton, Hampshire, GU34 3AQ

Tel: +44 (0)1420 89007 Fax: +44 (0)1420 87301 www.rg-racing.com Email: info@rg-racing.com



NOTICE DE MONTAGE LP0319BK SUPPORT DE PLAQUE
HONDA MSX 125 GROM 2021-



CE KIT CONTIENT LES ARTICLES ILLUSTRÉS ET ÉTIQUETES SUR LA PAGE.

CERTAINES PARTIES PEUVENT ÊTRE PRÉSENTES UNIQUEMENT POUR LA CLARTÉ DES INSTRUCTIONS.

NE PAS PROCÉDER AU MONTAGE TANT QUE VOUS N'ÊTES PAS SÛR QUE TOUTES LES PIÈCES SOIENT PRÉSENTES.

VEUILLEZ LIRE TOUTES LES INSTRUCTIONS AVANT DE CONTINUER.

**EN CAS DE DOUTE LORS DU MONTAGE DE NOS PRODUITS, CONSULTEZ UN DE NOS
REVENDEURS OU FAITES APPEL À UN TECHNICIEN QUALIFIÉ.**

VEUILLEZ NOTER QUE LA FAÇON DONT LE KIT EST EMBALLÉ NE REPRÉSENTE PAS NECESSAIREMENT LA
MANIÈRE DE LE MONTER SUR LA MOTO.

SI DES RONDELLES EN CAOUTCHOUC SONT UTILISÉES POUR MAINTENIR LES COMPOSANTS SUR LES BOULONS,
ELLES PEUVENT ÊTRE JETÉES.

NOTICE DISPONIBLE AU TÉLÉCHARGEMENT SUR :
WWW.RG-RACING.COM



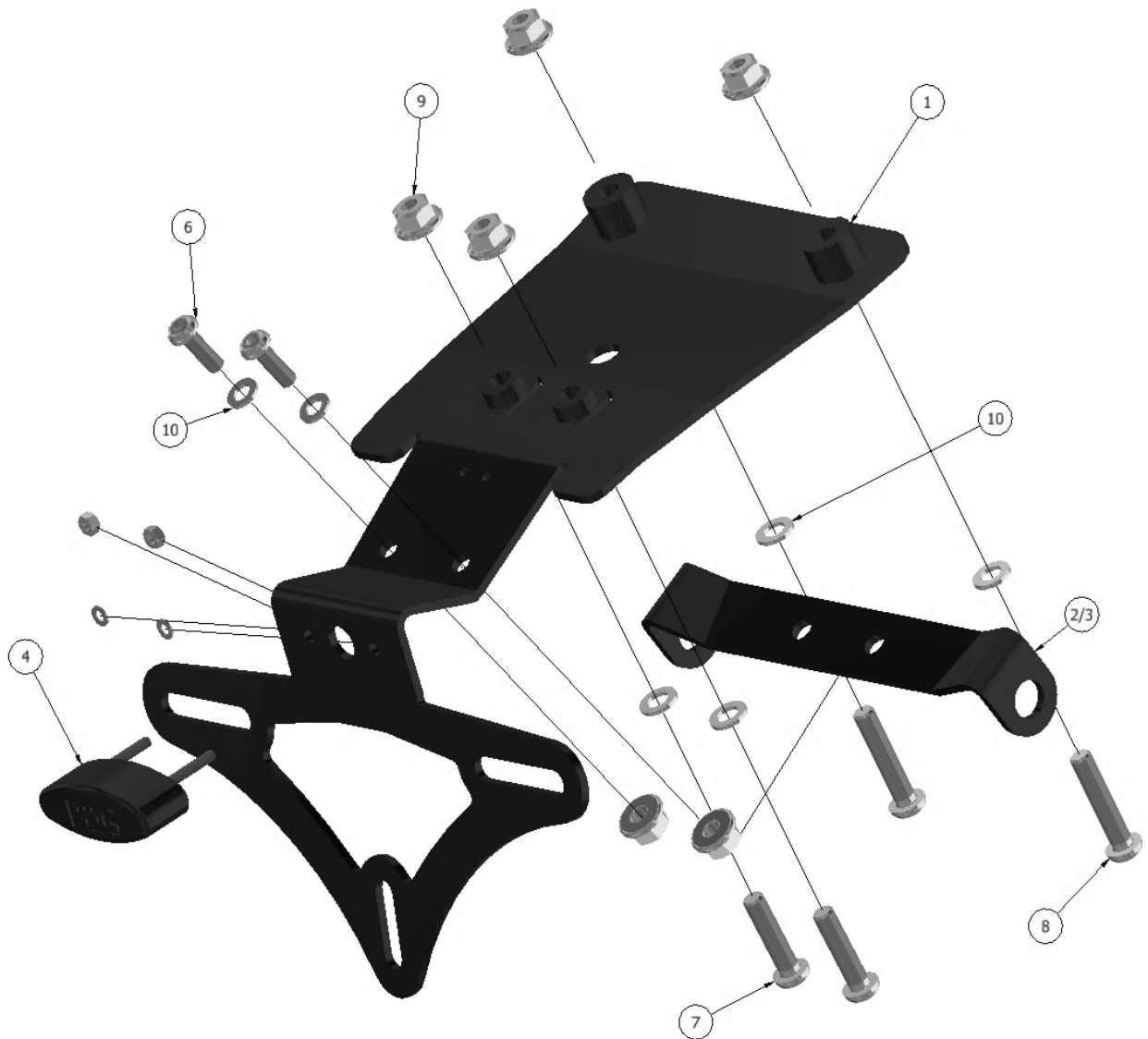
<u>OUTILS REQUIS</u>	<u>VALEURS DE SERRAGE</u>
<ul style="list-style-type: none"> • CLÉ CLIQUET + DOUILLES 6, 8, 10 & 12mm • CLÉS ALLEN • PETIT TOURNEVIS PLAT 	M4 BOULON = 8Nm M5 BOULON = 12Nm M6 BOULON = 15Nm M8 BOULON = 20Nm M10 BOULON = 40Nm M12 BOULON = 40Nm

LÉGENDE

ARTICLE NO.	PARTIE NUMÉRO	DESCRIPTION	QTÉ
ARTICLE 1	TB0319	SUPPORT DE FIXATION	1
ARTICLE 2	MP0260	SUPPORT MINI CLIGNOTANT	1
ARTICLE 3	MP0261	SUPPORT CLIGNOTANT D'ORIGINE	1
ARTICLE 4	LA0002	FEU DE PLAQUE	1
ARTICLE 5	IWC0001	CACHE FIL DE CLIGNOTANT	2
ARTICLE 6	M6x1.0x16	BOULON (SUPPORT CLIGNOTANT)	2
ARTICLE 7	M6x1.0x25	BOULON (BOULONS DE FIXATION ARRIÈRE)	2
ARTICLE 8	M6x1.0x30	BOULON (BOULONS DE FIXATION AVANT)	2
ARTICLE 9	M6x1.0	M6x1.00 - ÉCROU	6
ARTICLE 10	M6x12mm	RONDELLE	12
ARTICLE 11	CON0004	CONNECTEUR DE FEU DE PLAQUE	1
ARTICLE 12	CT100	2.5x100mm COLLIERS DE SERRAGE	2
ARTICLE 13	666-896/23	230mm MANCHON THERMO RÉTRACTABLE	3
ARTICLE 14	CLIP 1	CLIPS AUTOCOLLANTS	2



VUE D'ENSEMBLE





PHOTOS DE MONTAGE

PHOTO 1



PHOTO 2



PHOTO 3



PHOTO 4



PHOTO 5

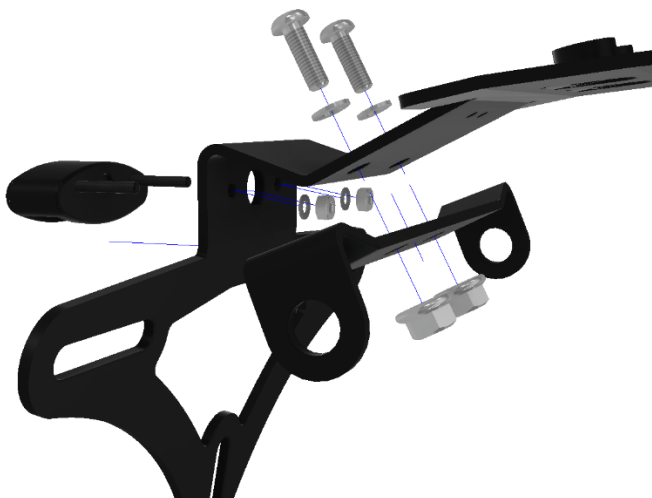


PHOTO 6

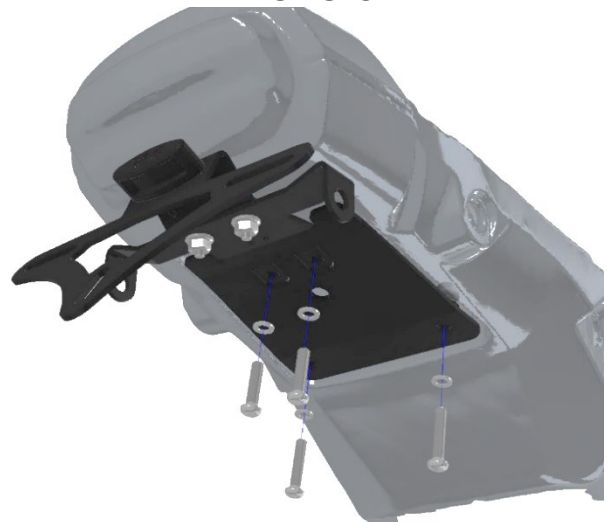




PHOTO 7

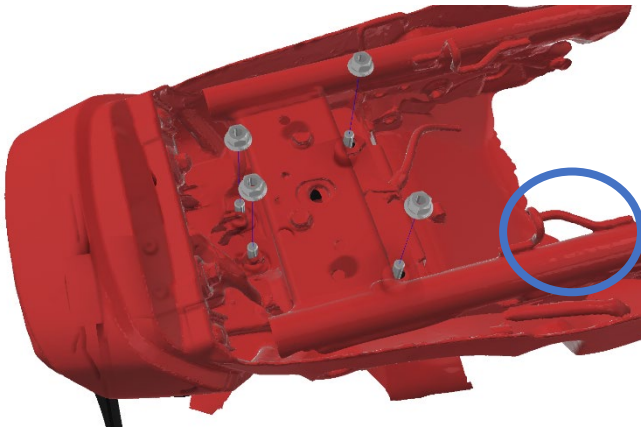


PHOTO 8



PHOTO 9

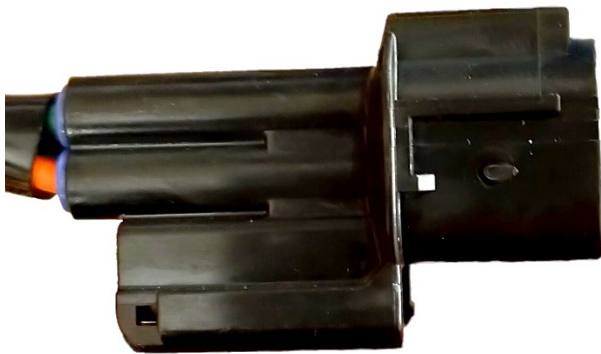
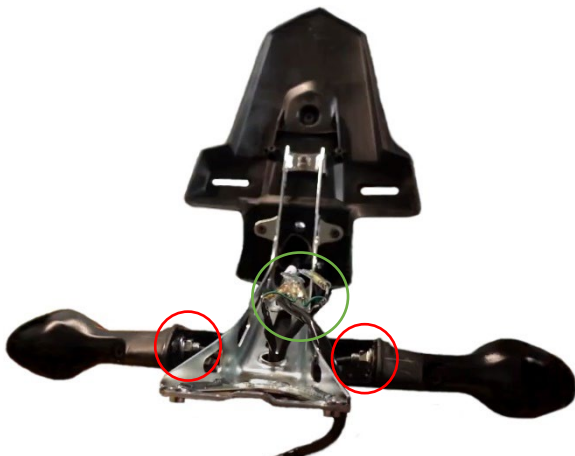


PHOTO 10



PHOTO 11





NOTICE DE MONTAGE

Démontage de l'empennage standard

- Commencez par retirer la selle de la moto.
- À l'aide d'un petit tournevis plat, débranchez délicatement les connecteurs d'éclairage d'origine situés dans la zone entourée en bleu sur la photo 7. Leur forme doit ressembler à celle de la photo 9.
- À l'aide d'une clé Allen de 4 mm et d'une douille de 10 mm, retirez les quatre boulons entourés en rouge sur la photo 10.
- Une fois les boulons d'origine retirés, vous pouvez retirer la selle..

Si vous réutilisez les clignotants d'origine

- Retirez les boulons entourés en rouge du boîtier arrière illustré sur la photo 11.
- Débranchez les connecteurs ronds entourés en vert (photo 11).
- Retirez les clignotants d'origine de l'ensemble.
- Retirez et conservez les connecteurs des clignotants et de l'éclairage de plaque d'origine.

Préparation de l'assemblage

- Veuillez suivre le schéma de montage éclaté en page 3.
- Commencez par préparer le câblage de l'éclairage de plaque d'immatriculation (article 4) et des clignotants (si des mini-clignotants sont installés à la place des clignotants d'origine).
- Pour les modèles 2025 et suivants, l'éclairage de plaque d'immatriculation devra être coupé et le CON0004 (article 11, photo 4) fixé au faisceau de câbles d'origine afin de fixer l'éclairage de plaque d'immatriculation R&G (article 4).
- Coupez deux petits morceaux de gaine thermorétractable (article 13) d'environ 10 à 15 mm de longueur pour une utilisation ultérieure..

Si vous installez des micro-clignotants

- Insérez les fils dans la gaine thermorétractable fournie et chauffez-les avec un pistolet thermique ou un briquet jusqu'à ce qu'ils ne puissent plus bouger librement (Photo 1).
- Comme illustré sur la Photo 2, passez les fils dans le support de clignotant d'origine fourni (Article 3), puis dans un écrou à bride (fourni séparément avec les micro-clignotants), puis dans le cache-câbles des clignotants (Article 10).
- Une fois le cache-câbles en place, enfiler le petit morceau de gaine thermorétractable précédemment découpé et chauffez jusqu'à ce que le cache-câbles ne puisse plus bouger. (Photo 3).
- Insérez ensuite les fils dans le trou central du support de plaque d'immatriculation.
- Si les micro-clignotants utilisés ne sont pas équipés de connecteurs à cosses rondes, utilisez les connecteurs à cosses rondes fournis (Article 11, Photo 4) qui peuvent être connectés aux câbles précédemment retirés du boîtier arrière d'origine..

Si vous réutilisez les clignotants d'origine

- Insérez les clignotants à travers le support de clignotant d'origine fourni (article 3) et serrez l'écrou qui a également été retiré de l'unité arrière d'origine.
- En suivant le schéma de la photo 5, insérez les tiges filetées de l'éclairage de plaque d'immatriculation R&G fourni (article 4) dans le support de plaque d'immatriculation, puis ajoutez les rondelles et les écrous fournis avec l'éclairage de plaque d'immatriculation et serrez fermement.
- Assemblez le support de clignotant (d'origine (article 3) ou mini (article 2)) avec les petits boulons à tête bombée de 16 mm (article 6) et deux rondelles et écrous.

Racing Technique Ltd T/A R&G

Unit 1, Shelley's Lane, East Worldham, Alton, Hampshire, GU34 3AQ

Tel: +44 (0)1420 89007 Fax: +44 (0)1420 87301 www.rg-racing.com Email: info@rg-racing.com



- Insérez ensuite les câbles dans le trou central du support de plaque d'immatriculation.

Montage du support R&G

- En suivant le schéma éclaté de la page 3, placez les rondelles sur les quatre boulons restants.
- Insérez les boulons à tête bombée de 30 mm (article 8) dans les points de fixation avant du support.
- Insérez ensuite les boulons à tête bombée plus petits de 25 mm (article 7) dans les points de fixation arrière.
- L'ensemble peut ensuite être présenté au passage de roue de la moto, les extrémités filetées des boulons étant insérées dans le passage de roue (Photo 6).
- Veillez à faire passer les câbles dans le trou du passage de roue de la moto.
- Une fois le passage effectué, serrez à la main les écrous restants sur les boulons saillants pour fixer l'ensemble.
- À l'aide d'une clé Allen de 4 mm et d'une douille de 10 mm, serrez chaque boulon jusqu'à ce qu'il soit bien serré.
- Rebranchez le câblage d'origine précédemment retiré du bloc arrière standard, en connectant les connecteurs cylindriques des clignotants et de l'éclairage de plaque au câblage standard.
- Rangez les câbles à l'aide des serre-câbles fournis (article 12) et des clips autocollants (article 14) afin qu'ils soient invisibles et ne se coincent pas.
- Une fois les câbles connectés, mettez le contact et testez le fonctionnement des clignotants et de l'éclairage de la plaque d'immatriculation, en vous assurant qu'ils clignent du bon côté.

IMPORTANT:

SI VOUS INSTALLEZ UNE PLAQUE D'IMMATRICULATION DE TAILLE STANDARD ET QUE VOUS LA PLACEZ BASSE SUR LE SUPPORT DE PLAQUE D'IMMATRICULATION, IL Y A UN RISQUE POTENTIEL QUE LA PLAQUE D'IMMATRICULATION PUISSE HEURTER LA ROUE ARRIÈRE SOUS UNE LOURDE CHARGE ET SUR DE GROSSES BOSSES DE LA ROUTE. IL EST DE VOTRE RESPONSABILITÉ DE VÉRIFIER CETTE POSSIBILITÉ ET DE PRENDRE DES MESURES POUR L'ÉVITER. LE NON-RESPECT DE CE POINT PEUT ENTRAÎNER DES BLESSURES GRAVES.

ISSUE 2 – 11/04/2025 (MH)

CONSUMER NOTICE

The catalogue description and any exhibition of samples are only broad indications of the Products and R&G may make design changes which do not diminish their performance or visual appeal and supplying them in such state shall conform to the order. The Buyer acknowledges no representation or warranty (other than as to title) has been given or will apply to the Products other than those in R&G's order or confirmation and the Buyer confirms it has chosen the Products as being of merchantable quality and suitable for its particular purposes. Where R&G fits the Products or undertakes other services it shall exercise reasonable skill and care and rectify any fault free of charge unless the workmanship has been disturbed. The Buyer is responsible for ensuring that the warranty on the motorcycle is not affected by the fitting of the Products. On return of any defective Products R&G shall at its option either supply a replacement or refund the purchase money but shall not be liable if the Products have been modified or used or maintained otherwise than in accordance with R&G's or manufacturer's instructions and good engineering practice or if the defect arises from accident or neglect. Other than identified above and subject to R&G not limiting its liability for causing death and personal injury, it shall not be liable for indirect or consequential loss and otherwise its liability shall be limited to the amounts paid by the Buyer for the Products or the fitting or service concerned. These terms do not affect the Buyer's statutory rights.

R&G RACING RETURNS POLICY (NON-FAULTY GOODS)

Returns must be pre-authorized (if not pre-authorized the return will be rejected). Goods may only be returned direct to us if they were purchased direct from us (customer must prove if necessary). Otherwise to be returned to original vendor. Goods must be in re-sellable condition, in the opinion of R&G Racing. All returns are subject to a 25% restocking and handling fee (25% of the gross value exc. P&P – at the prevailing price at time of purchase).

Racing Technique Ltd T/A R&G

Unit 1, Shelley's Lane, East Worldham, Alton, Hampshire, GU34 3AQ

Tel: +44 (0)1420 89007 Fax: +44 (0)1420 87301 www.rg-racing.com Email: info@rg-racing.com



The customer must pay any and all carriage charges. No returns of discontinued products, unless within 14 days of purchase. This policy does not