



FITTING INSTRUCTIONS FOR LP0376BK
LICENCE PLATE BRACKET



This kit contains the items pictured and labelled over page.
Some parts may be shown for clarity of instructions only.
Do not proceed until you are sure all parts are present.
Please read all instructions before proceeding.

IF IN ANY DOUBT WHEN FITTING OUR PRODUCTS, CONSULT ONE OF OUR DEALERS
OR HAVE FITTED BY A QUALIFIED TECHNICIAN.

Please note that the way the kit is packed does not necessarily represent the way of mounting to the bike.

In the event of rubber washers being used to hold components onto bolts, these rubber washers can be thrown away.



<u>TOOLS REQUIRED</u>	<u>GENERAL TORQUE SETTINGS</u>
<ul style="list-style-type: none"> • Set of metric Hex keys to include 5mm & 6mm. • Set of metric sockets and wrench. To include 8mm, 10mm & 12mm. <ul style="list-style-type: none"> • Cable cutters 	<p>M4 BOLT = 8Nm</p> <p>M5 BOLT = 12Nm</p> <p>M6 BOLT = 15Nm</p> <p>M8 BOLT = 20Nm</p> <p>M10 BOLT = 40Nm</p> <p>M12 BOLT = 40Nm</p>

LEGEND

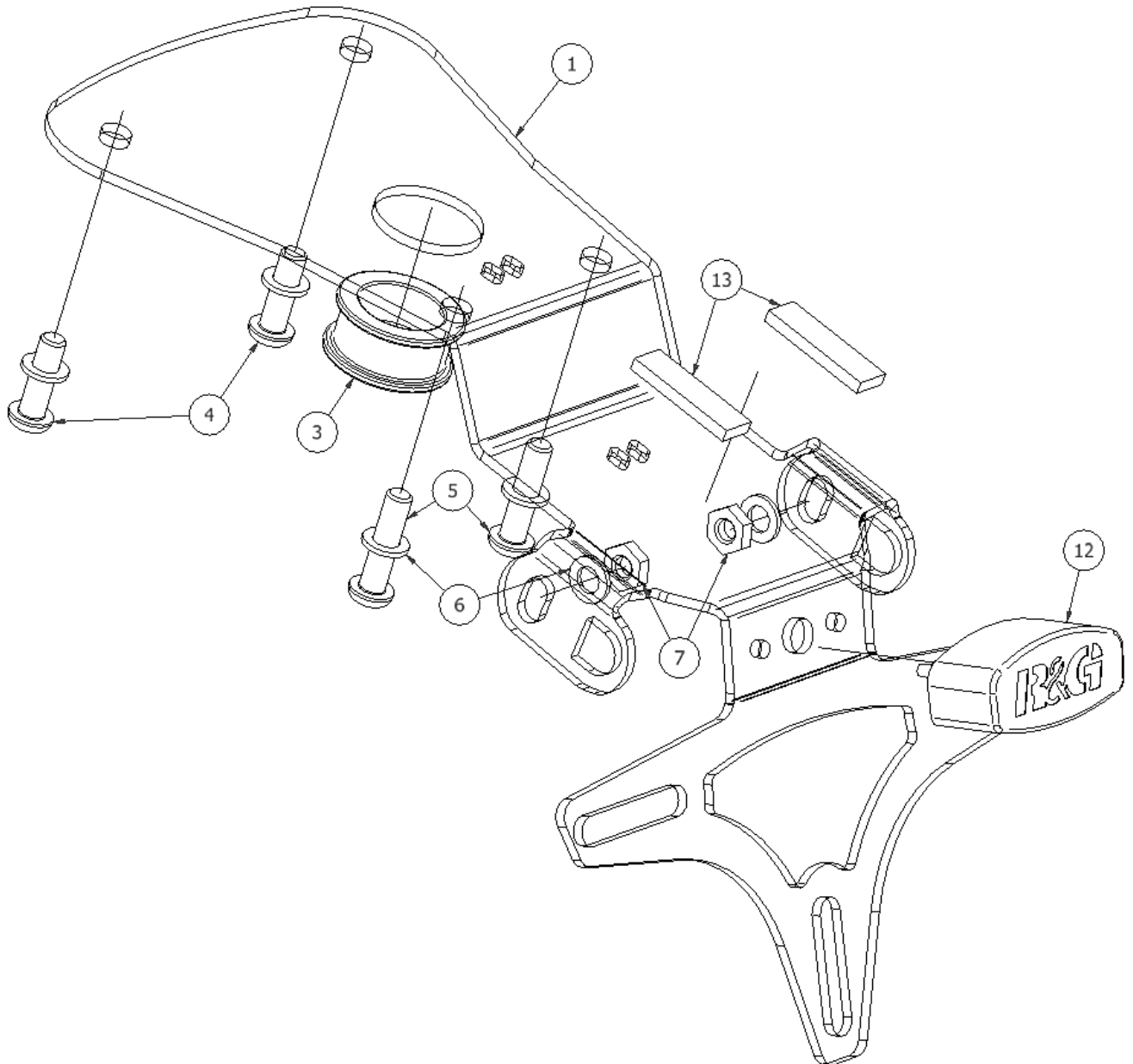
ITEM No.	DESCRIPTION	QTY
ITEM 1	MAIN BRACKET	1
ITEM 2	NUMBER PLATE LIGHT CONNECTOR	1
ITEM 3	RUBBER BUNG	1
ITEM 4	20mm BUTTON HEAD BOLT	2
ITEM 5	25mm BUTTON HEAD BOLT	2
ITEM 6	FLAT WASHER	6
ITEM 7	NYLOC NUT	2
ITEM 8	75mm CABLE TIE - BLACK	4
ITEM 10	200mm LENGTH OF Ø18mm HEAT SHRINK	1
ITEM 11	200mm LENGTH OF HEAT SHRINK	1
ITEM 12	LICENCE PLATE LIGHT (W/SHROUD)	1
ITEM 13	100mm LENGTH OF SELF-ADHESIVE FOAM	1

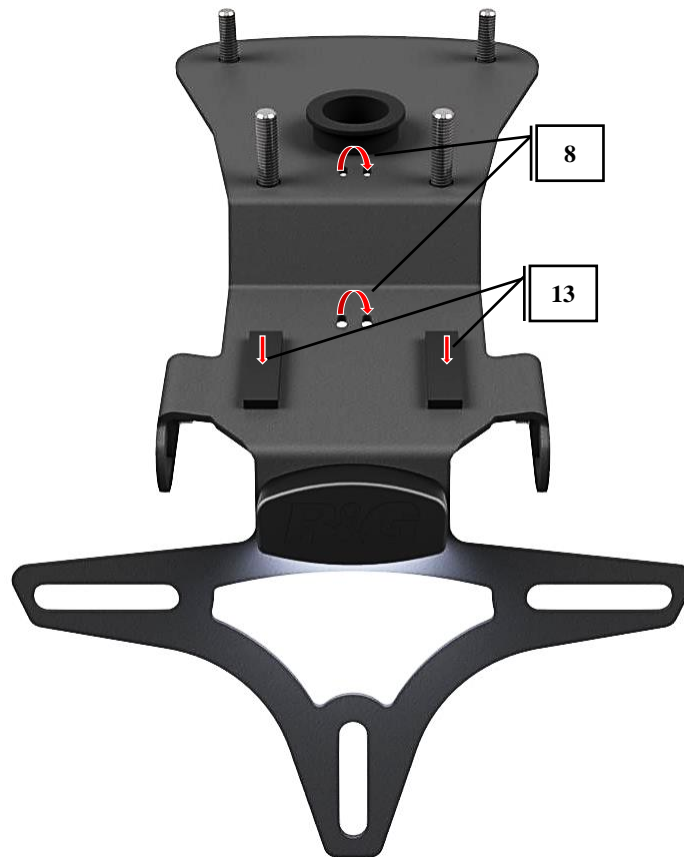
R&G

Unit 1, Shelley's Lane, East Worldham, Alton, Hampshire, GU34 3AQ
 Tel: +44 (0)1420 89007 www.rg-racing.com Email: info@rg-racing.com



ASSEMBLY DIAGRAM





FITTING INSTRUCTIONS

Disassembly of OEM Tail Unit:

- Disconnect the wiring connector going to the OEM number plate light unit located under the passenger seat.
- Remove the OEM tail unit via the four bolts on the tail unit/ undertray of the motorcycle.
- Once removed, un-screw all visible bolts on the OEM Tail Unit, disassemble the unit, then remove the OEM indicators for later use.
- Also remove the sub-loom for use with the R&G tail tidy.
- Re-assemble the OEM Tail unit without the indicators and store away safely.

Tail Tidy Assembly:

- Insert the supplied rubber bung into the 1" hole on the tail tidy bracket.
- If required cut the supplied self-adhesive foam strips to a similar size shown in the assembly diagram above and stick in the position shown.
- Fasten the supplied R&G number plate light to the tail tidy assembly.
- Bolt the OEM indicators onto the tail tidy, using the supplied nyloc nuts and washers with the OEM bolts.

R&G

Unit 1, Shelley's Lane, East Worldham, Alton, Hampshire, GU34 3AQ
 Tel: +44 (0)1420 89007 Fax: +44 (0)1420 87301 www.rg-racing.com Email: info@rg-racing.com



- Use the larger diameter heat shrink supplied to cover the sub loom and the smaller heat shrink to cover the number plate light and indicator wiring, using electrical tape to seal/cover any gaps as required.
- Pass the wiring through the rubber bung, then cable tie the loom in place using the cable tie slots as shown in the second diagram.
- Offer up the tail tidy to the motorcycle and pass the connectors through the hole in the undertray.
- Then pass 2x of the supplied 25mm button head bolts (**Item 6**) with washers through the rearward holes in the main bracket then through the motorcycles undertray and hand tighten.
***Please note:** It is important you do not tighten the longer 25mm bolts into the mounting holes closest to the front of the bike as this will damage the captive dome nuts on the inside of the tail unit.*
- Then pass the remaining 2x 20mm button head bolts (**Item 4**) through the forward mounting holes and hand tighten.
- Connect the indicator and number plate light connectors to the original sub loom.
Test the indicators and number plate light function correctly before continuing with the fitting.
- Then fully tighten the bolts to the required torque spec.

IMPORTANT: FOR SAFETY, ENSURE THE LICENCE PLATE IS PLACED AS HIGH AS POSSIBLE ON THE TAIL TIDY (IT MAY REQUIRE DRILLING). IF FITTING A LICENCE PLATE OF 200MM OR LONGER (INCLUDING ANY SHROUD OR REFLECTOR ATTACHMENT) TO THE BRACKET, BEFORE RIDING, FULLY COMPRESS THE SUSPENSION TO ENSURE NO PART OF THE ASSEMBLY CAN CONTACT THE TYRE WHILE THE VEHICLE IS IN MOTION OR UNDER LOAD. IT IS YOUR RESPONSIBILITY TO CHECK FOR THIS POSSIBILITY AND TAKE AVOIDING ACTION. FAILURE TO CHECK THIS COULD RESULT IN SERIOUS INJURY OR DAMAGE TO THE MOTORCYCLE.

ISSUE 1 30/05/2024 TB

CONSUMER NOTICE

The catalogue description and any exhibition of samples are only broad indications of the Products and R&G may make design changes which do not diminish their performance or visual appeal and supplying them in such state shall conform to the order. The Buyer acknowledges no representation or warranty (other than as to title) has been given or will apply to the Products other than those in R&G's order or confirmation and the Buyer confirms it has chosen the Products as being of merchantable quality and suitable for its particular purposes. Where R&G fits the Products or undertakes other services it shall exercise reasonable skill and care and rectify any fault free of charge unless the workmanship has been disturbed. The Buyer is responsible for ensuring that the warranty on the motorcycle is not affected by the fitting of the Products. On return of any defective Products R&G shall at its option either supply a replacement or refund the purchase money but shall not be liable if the Products have been modified or used or maintained otherwise than in accordance with R&G's or manufacturer's instructions and good engineering practice or if the defect arises from accident or neglect. Other than identified above and subject to R&G not limiting its liability for causing death and personal injury, it shall not be liable for indirect or consequential loss and otherwise its liability shall be limited to the amounts paid by the Buyer for the Products or the fitting or service concerned. These terms do not affect the Buyer's statutory rights.

R&G RACING RETURNS POLICY (NON-FAULTY GOODS)

Returns must be pre-authorized (if not pre-authorized the return will be rejected). Goods may only be returned direct to us if they were purchased direct from us (customer must prove if necessary). Otherwise to be returned to original vendor. Goods must be in re-sellable condition, in the opinion of R&G Racing. All returns are subject to a 25% restocking and handling fee (25% of the gross value exc. P&P – at the prevailing price at time of purchase). The customer must pay any and all carriage charges. No returns of discontinued products, unless within 14 days of purchase. This policy does not affect your statutory rights and does not refer to faulty goods.

R&G

Unit 1, Shelley's Lane, East Worldham, Alton, Hampshire, GU34 3AQ
Tel: +44 (0)1420 89007 Fax: +44 (0)1420 87301 www.rg-racing.com Email: info@rg-racing.com