



FITTING INSTRUCTIONS FOR LP0389BK
LICENCE PLATE BRACKET



This kit contains the items pictured and labelled over page.
Some parts may be shown for clarity of instructions only.
Do not proceed until you are sure all parts are present.
Please read all instructions before proceeding.

IF IN ANY DOUBT WHEN FITTING OUR PRODUCTS, CONSULT ONE OF OUR DEALERS
OR HAVE FITTED BY A QUALIFIED TECHNICIAN.

Please note that the way the kit is packed does not necessarily represent the way of mounting to the bike.

In the event of rubber washers being used to hold components onto bolts, these rubber washers can be thrown away.



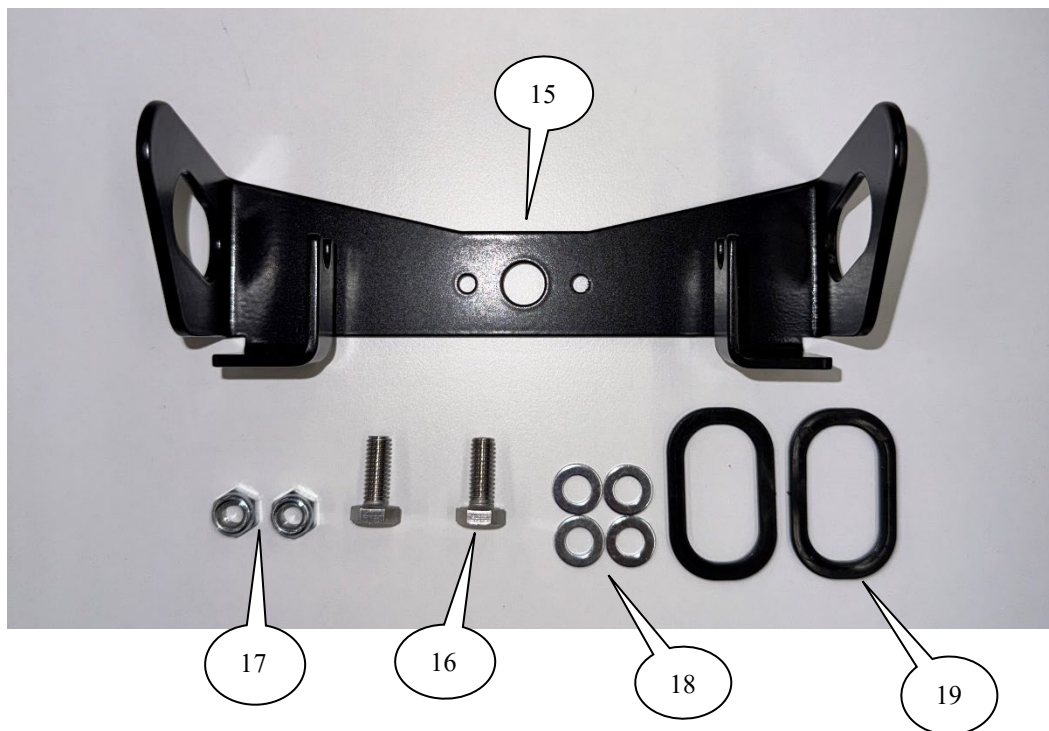
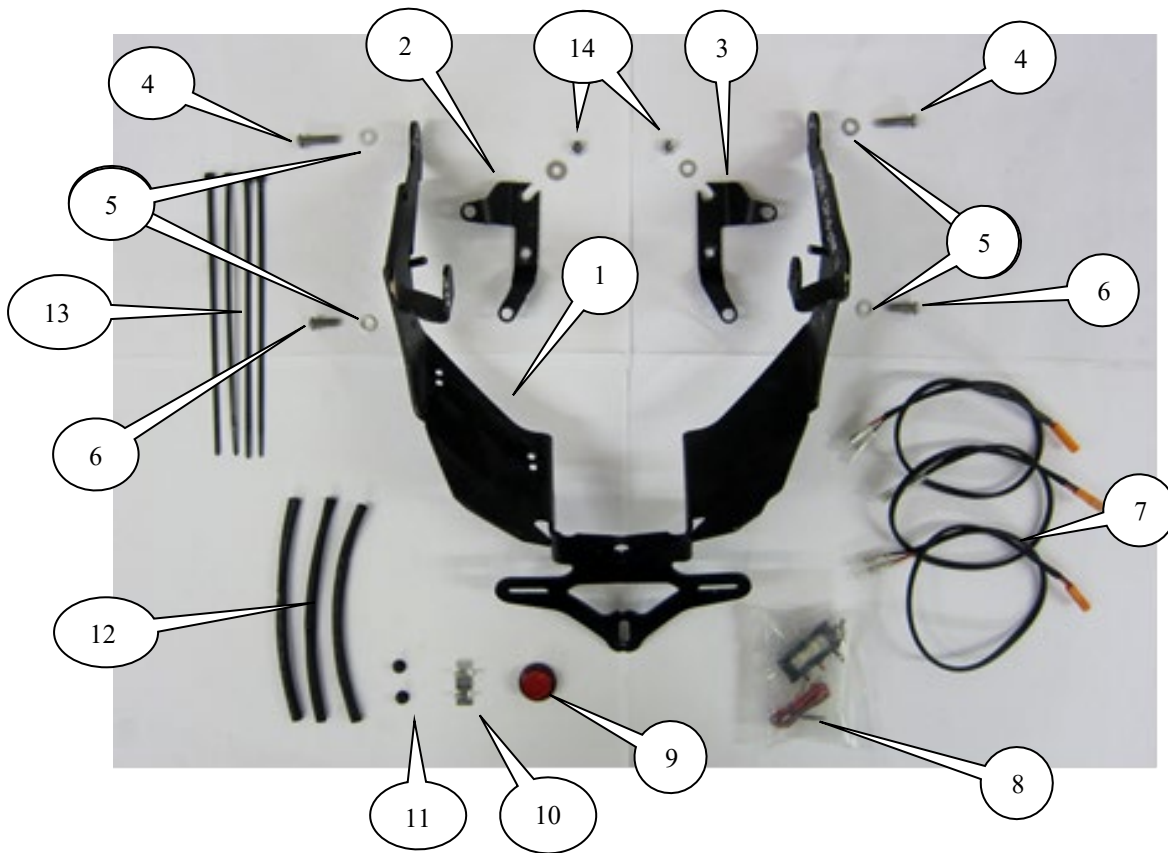
<u>TOOLS REQUIRED</u>	<u>GENERAL TORQUE SETTINGS</u>
<ul style="list-style-type: none"> • Set of metric Allen keys to include 4 & 5mm A/F sizes. • Socket set to include 6, 10 & 12mm sockets and wrench. • 12mm open-ended spanner. <ul style="list-style-type: none"> • Phillips screwdriver. • Small amount of superglue. <ul style="list-style-type: none"> • Cable cutters. 	<p>M4 BOLT = 8Nm</p> <p>M5 BOLT = 12Nm</p> <p>M6 BOLT = 15Nm</p> <p>M8 BOLT = 20Nm</p> <p>M10 BOLT = 40Nm</p> <p>M12 BOLT = 40Nm</p>

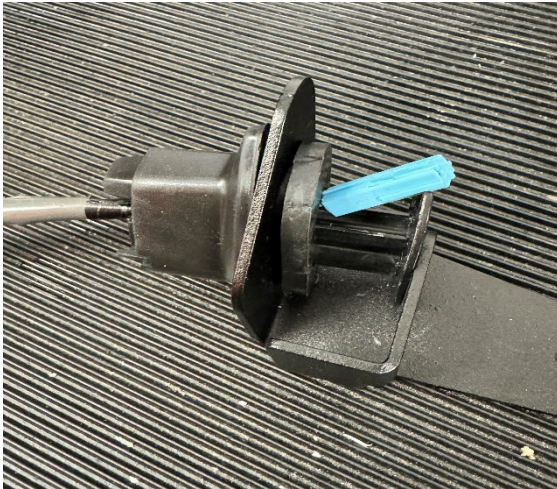
LEGEND

ITEM No.	DESCRIPTION	QTY
ITEM 1	LICENCE PLATE BRACKET (TB0139 Part 1)	1
ITEM 2	LICENCE PLATE LEFT SIDE BRACKET (TB0139 Part 2)	1
ITEM 3	LICENCE PLATE RIGHT SIDE BRACKET (TB0139 Part 3)	1
ITEM 4	M6 x 25mm LONG BUTTON HEAD BOLT	2
ITEM 5	M6 WASHER	6
ITEM 6	M6 x 16mm LONG BUTTON HEAD BOLT	2
ITEM 7	CON0009 INDICATOR & No PLATE LIGHT CONNECTORS	3
ITEM 8	LA0002 No. PLATE LIGHT ASSEMBLY	1
ITEM 9	REFLECTOR	1
ITEM 10	SELF ADHESIVE CABLE CLIPS	2
ITEM 11	RUBBER BUNGS	2
ITEM 12	150mm LENGTH OF HEATSHRINK	3
ITEM 13	2.5mm CABLE TIES	4
ITEM 14	M6 NYLOC NUTS	2
ITEM 15	TB0389 INDICATOR ADAPTOR	1
ITEM 16	M6 x 1.00 x 16mm HEX HEAD BOLT	4
ITEM 17	M6 NYLOC NUTS	2
ITEM 18	M6 x 12mm WASHER	4
ITEM 19	I0032 INDICATOR SPACER	2



EXPLODED DIAGRAMS

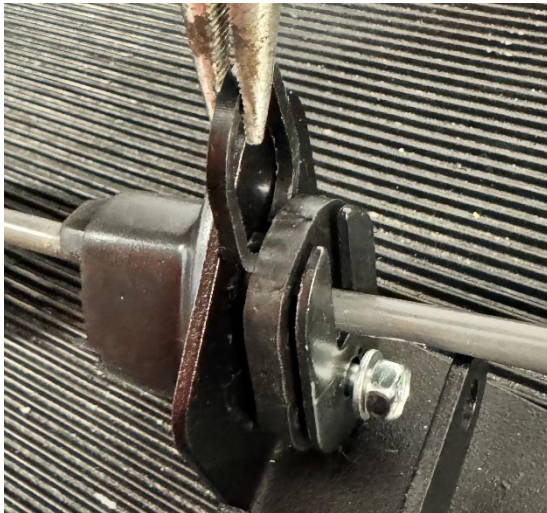




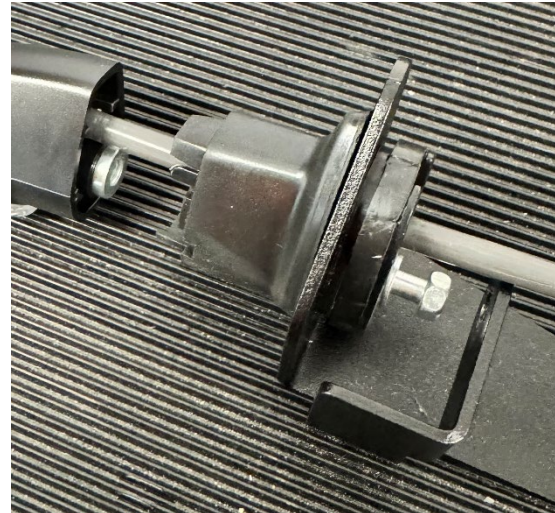
PICTURE 1



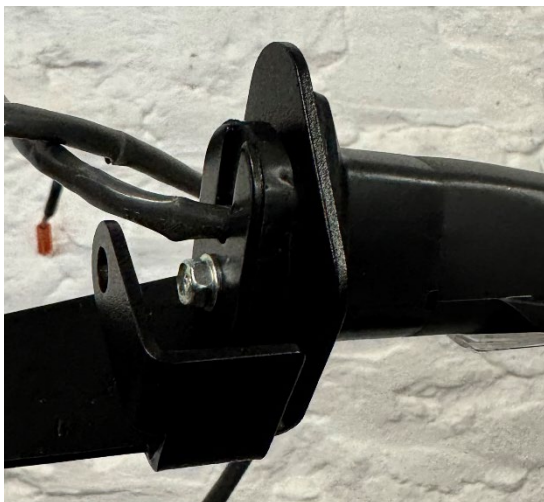
PICTURE 2



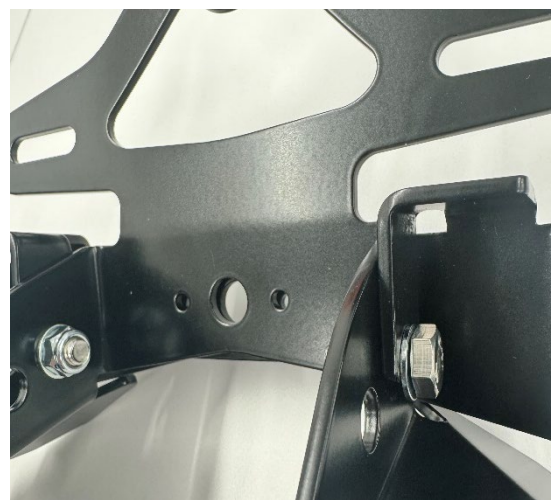
PICTURE 3



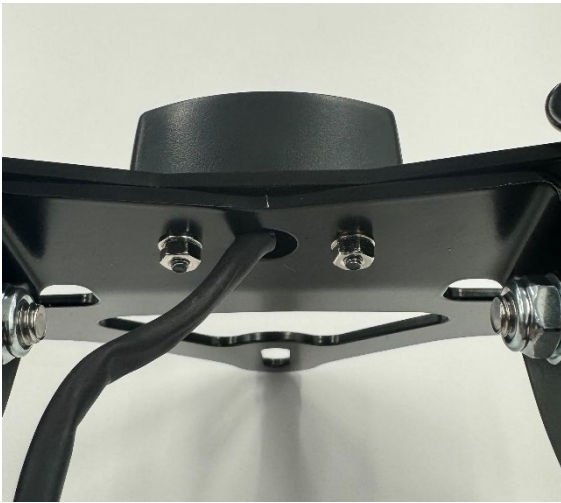
PICTURE 4



PICTURE 5



PICTURE 6



PICTURE 7



PICTURE 8



PICTURE 9



PICTURE 10



PICTURE 11



PICTURE 12



PICTURE 13



PICTURE 14



PICTURE 15



PICTURE 16



REMOVE / LOOSEN / DISCONNECT BEFORE FITTING

- BOTH SEATS (REMOVE) **RE-INSTAL AFTER FITING R&G TAIL TIDY**
- SIDE PLASTICS (LOOSEN) **RE-INSTAL AFTER FITING R&G TAIL TIDY**
- REAR SUB FRAME PLASTIC (REMOVE) **RE-INSTAL AFTER FITING R&G TAIL TIDY**
- OEM NUMBER PLATE BRACKET (REMOVE) **NOT TO BE USED AGAIN**
- INDICATOR CONNECTORS (DISCONNECT) **RE-INSTAL AFTER FITING R&G TAIL TIDY**
- NUMBER PLATE (REMOVE) **RE-USE ON R&G TAIL TIDY**
- EXHAUST SHEILD (REMOVE) **RE-USE ON R&G TAIL TIDY**
- EXHAUST PLASTIC COVERS (REMOVE) **RE-USE ON R&G TAIL TIDY**
- INDICATORS (REMOVE) **REMEMBER THE OEM ORIENTATION. RE-USE ON R&G TAIL TIDY**

FITTING INSTRUCTIONS

Once the pre fitting list is completed, fitting the R&G tail tidy can begin.

1. Start by fitting the indicators into the correct side of the Indicator Bracket (**ITEM 15**), follow the order of pictures to assist the correct fitment.
 - PICTURE 1 instal OEM rubber spacer, slot metal bracket and wire through.
 - PICTURE 2 pull wire through and push metal spacer in through.
 - PICTURE 3 install R&G Indicator spacer (**ITEM 19**) cut to assist.
 - PICTURE 4 push indicator on and tighten bolt.
 - PICTURE 5 repeat for other side.
2. Once the indicators are fitted. You need to place the hex head bolts (**ITEM 16**), washers (**ITEM 18**) and nyloc nuts (**ITEM 18**) through the licence plate bracket (**ITEM 1**) and slot the indicator bracket (**ITEM 15**) onto the bolts as shown in PICTURE 6 and tighten.
3. Once slotted into position, the plate light assembly (**ITEM 8**) can be placed through the front of the tail tidy unit as shown in PICTURE 7 and tighten.
(ENSURE LIGHT CABLES ARE PROTECTED WITH THE SUPPLIED HEAT SHRINK, USE A HEAT GUN TO APPLY).



4. Connect the two OEM plastic exhaust shields using the OEM screws to the licence plate left and right side brackets (**ITEM 2/ ITEM 3**) as shown in PICTURE 8-9.
5. Mount the now assembled OEM plastic exhaust shields to the tail tidy using two washers (**ITEM 5**) and two nyloc nuts (**ITEM 14**) as shown in PICTURE 10 (**DO NOT FULLY TIGHTEN YET**).
6. Once mounted, connect the OEM exhaust shield on both sides by slotting it into place and shown in PICTURE 11.
7. Now the tail tidy is fully assembled. Next is some cable management, use PICTURE 11 / 12 to see how it should be correctly cable tied using (**ITEM 13 / 10**)
8. The next step is to mount the assembly onto the bike. Slide the assembly into position ensuring all mounting holes and exhaust heat shield OEM bolts line up. Use the bolts and washers as shown in the EXPLODED PARTS PICTURE bolts (**ITEM 4 / 6**) and washers (**ITEM 5**), use PICTURES 13 / 14 to assist and then tighten using the Torque setting on page 2.
9. Now the tail tidy is mounted securely it is time to connect the indicators/ number plate light wires. Firstly connect the number plate light connector (**ITEM 7**), **BLACK MALE BULLET CONNECTOR INTO RED FEMALE BULLET CONNECTOR AND RED MALE BULLET CONNECTOR INTO BLACK FEMALE BULLET CONNECTOR**. Then connect the orange plug end of (**ITEM 7**) into the OEM white number plate light connector as shown in PICTURE 15. Now reconnect the indicator plugs into the correct colour matching connectors as shown in PICTURE 16. Check all lights and indicators are working.



Now the R&G Tail Tidy is fitted, it is time to reinstall all OEM components that were removed at the start of the process. Remember to refer to the at the start of the instruction on Page 7 (**REMOVE/ LOOSEN / DISCONNECT BEFORE FITTING**).

IMPORTANT: FOR SAFETY, ENSURE THE LICENCE PLATE IS PLACED AS HIGH AS POSSIBLE ON THE TAIL TIDY (IT MAY REQUIRE DRILLING). IF FITTING A LICENCE PLATE OF 200MM OR LONGER (INCLUDING ANY SHROUD OR REFLECTOR ATTACHMENT) TO THE BRACKET, BEFORE RIDING, FULLY COMPRESS THE SUSPENSION TO ENSURE NO PART OF THE ASSEMBLY CAN CONTACT THE TYRE WHILE THE VEHICLE IS IN MOTION OR UNDER LOAD. IT IS YOUR RESPONSIBILITY TO CHECK FOR THIS POSSIBILITY AND TAKE AVOIDING ACTION. FAILURE TO CHECK THIS COULD RESULT IN SERIOUS INJURY OR DAMAGE TO THE MOTORCYCLE.

ISSUE 1 – 18/12/2024 (JH)

CONSUMER NOTICE

The catalogue description and any exhibition of samples are only broad indications of the Products and R&G may make design changes which do not diminish their performance or visual appeal and supplying them in such state shall conform to the order. The Buyer acknowledges no representation or warranty (other than as to title) has been given or will apply to the Products other than those in R&G's order or confirmation and the Buyer confirms it has chosen the Products as being of merchantable quality and suitable for its particular purposes. Where R&G fits the Products or undertakes other services it shall exercise reasonable skill and care and rectify any fault free of charge unless the workmanship has been disturbed. The Buyer is responsible for ensuring that the warranty on the motorcycle is not affected by the fitting of the Products. On return of any defective Products R&G shall at its option either supply a replacement or refund the purchase money but shall not be liable if the Products have been modified or used or maintained otherwise than in accordance with R&G's or manufacturer's instructions and good engineering practice or if the defect arises from accident or neglect. Other than identified above and subject to R&G not limiting its liability for causing death and personal injury, it shall not be liable for indirect or consequential loss and otherwise its liability shall be limited to the amounts paid by the Buyer for the Products or the fitting or service concerned. These terms do not affect the Buyer's statutory rights.

R&G RACING RETURNS POLICY (NON-FAULTY GOODS)

Returns must be pre-authorized (if not pre-authorized the return will be rejected). Goods may only be returned direct to us if they were purchased direct from us (customer must prove if necessary). Otherwise to be returned to original vendor. Goods must be in re-sellable condition, in the opinion of R&G Racing. All returns are subject to a 25% restocking and handling fee (25% of the gross value exc. P&P – at the prevailing price at time of purchase). The customer must pay any and all carriage charges. No returns of discontinued products, unless within 14 days of purchase. This policy does not affect your statutory rights and does not refer to faulty goods.



NOTICE DE MONTAGE LP0389BK
SUPPORT DE PLAQUE



CE KIT CONTIENT LES ARTICLES ILLUSTRÉS ET ÉTIQUETES SUR LA PAGE.

CERTAINES PARTIES PEUVENT ÊTRE PRÉSENTES UNIQUEMENT POUR LA CLARTE DES INSTRUCTIONS.

NE PAS PROCÉDER AU MONTAGE TANT QUE VOUS N'ÊTES PAS SÛR QUE TOUTES LES PIÈCES SOIENT PRÉSENTES.

VEUILLEZ LIRE TOUTES LES INSTRUCTIONS AVANT DE CONTINUER.

**EN CAS DE DOUTE LORS DU MONTAGE DE NOS PRODUITS, CONSULTEZ UN DE NOS
REVENDEURS OU FAITES APPEL À UN TECHNICIEN QUALIFIÉ.**

VEUILLEZ NOTER QUE LA FAÇON DONT LE KIT EST EMBALLÉ NE REPRÉSENTE PAS NECESSAIREMENT LA
MANIÈRE DE LE MONTER SUR LA MOTO.

SI DES RONDELLES EN CAOUTCHOUC SONT UTILISÉES POUR MAINTENIR LES COMPOSANTS SUR LES
BOULONS, ELLES PEUVENT ÊTRE JETÉES.

NOTICE DISPONIBLE AU TÉLÉCHARGEMENT SUR :
WWW.RG-RACING.COM



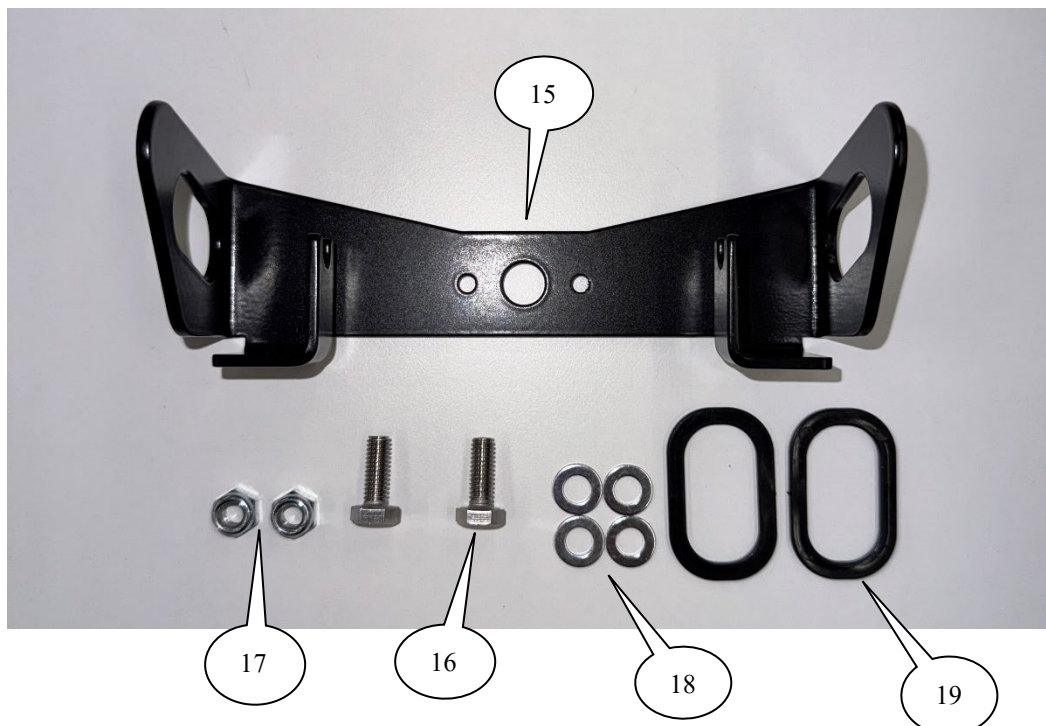
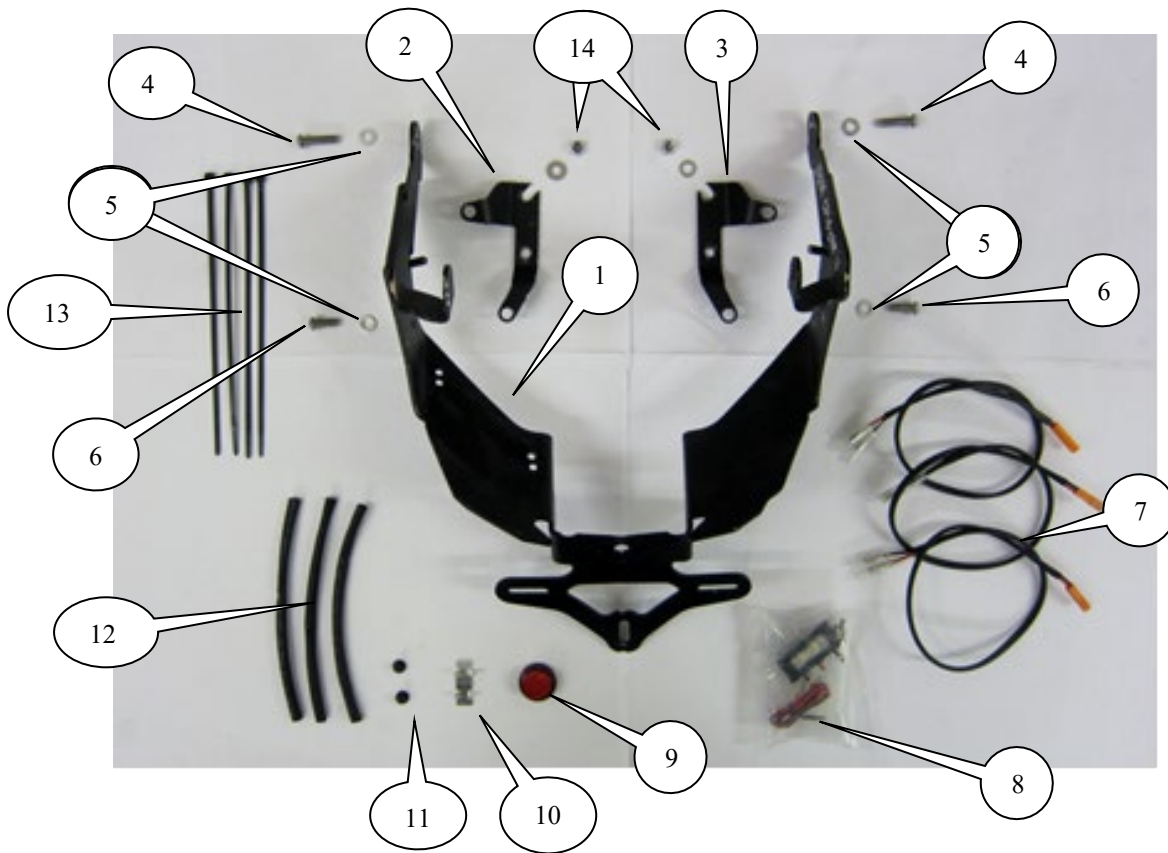
<u>OUTILS REQUIS</u>	<u>VALEURS DE SERRAGE</u>
<ul style="list-style-type: none"> • Clés Allen 4 & 5mm. • Clé à cliquet + douilles 6, 10 & 12mm. <ul style="list-style-type: none"> • Clé plate de 12 mm. • Tournevis cruciforme. • Petite quantité de superglue <ul style="list-style-type: none"> • Coupe-câble. 	M4 BOULON = 8Nm M5 BOULON = 12Nm M6 BOULON = 15Nm M8 BOULON = 20Nm M10 BOULON = 40Nm M12 BOULON = 40Nm

LÉGENDE

ARTICLE No.	DESCRIPTION	QTÉ
ARTICLE 1	SUPPORT DE PLAQUE (TB0139 Partie 1)	1
ARTICLE 2	SUPPORT DE PLAQUE GAUCHE (TB0139 Partie 2)	1
ARTICLE 3	SUPPORT DE PLAQUE DROIT (TB0139 Partie 3)	1
ARTICLE 4	M6 x 25mm BOULON	2
ARTICLE 5	M6 RONDELLE	6
ARTICLE 6	M6 x 16mm BOULON	2
ARTICLE 7	CON0009 CLIGNOTANT & CONNECTEURS DE FEU DE PLAQUE	3
ARTICLE 8	LA0002 No. ASSEMBLAGE FEU DE PLAQUE	1
ARTICLE 9	RÉFLECTEUR	1
ARTICLE 10	CLIPS AUTOCOLLANTS	2
ARTICLE 11	BOUCHONS EN CAOUTCHOUC	2
ARTICLE 12	150mm LONGUEUR DU GAINÉ THERMORETRACTABLE	3
ARTICLE 13	2.5mm COLLIERS DE SERRAGE	4
ARTICLE 14	M6 ÉCROUS	2
ARTICLE 15	TB0389 ADAPTATEUR DE CLIGNOTANT	1
ARTICLE 16	M6 x 1.00 x 16mm BOULON	4
ARTICLE 17	M6 ÉCROUS	2
ARTICLE 18	M6 x 12mm RONDELLE	4
ARTICLE 19	I0032 ENTRETOISE DE CLIGNOTANT	2



SCHÉMA D'ENSEMBLE



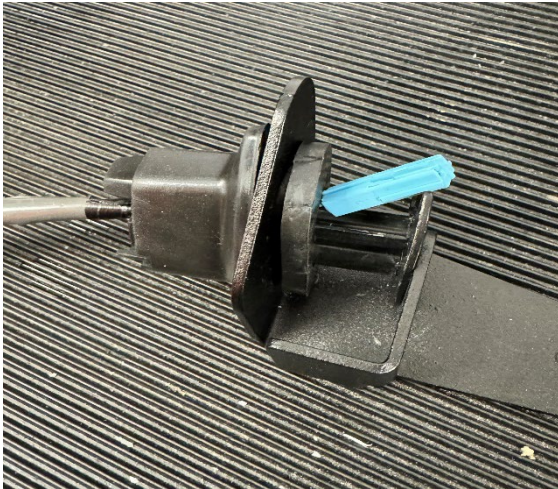


PHOTO 1

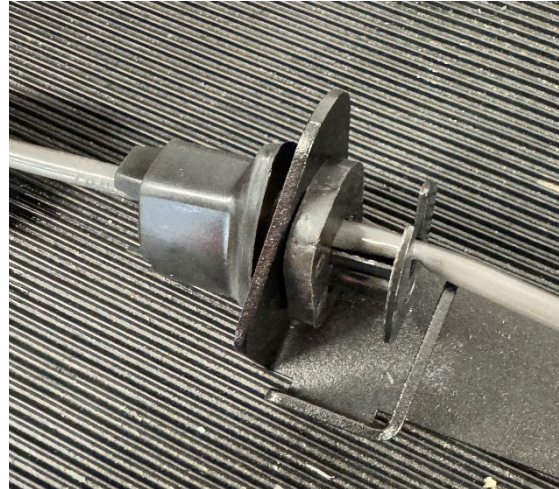


PHOTO 2

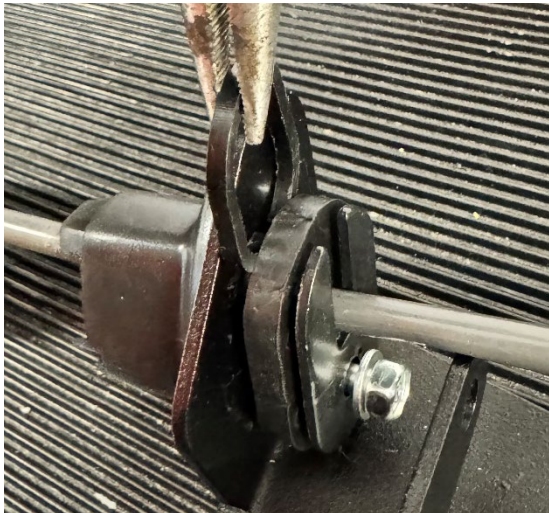


PHOTO 3

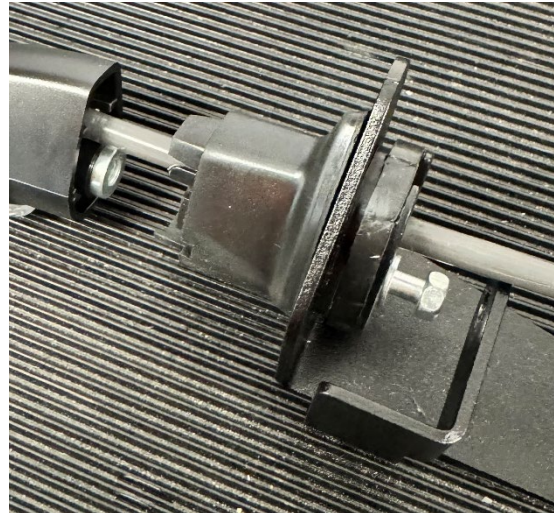


PHOTO 4

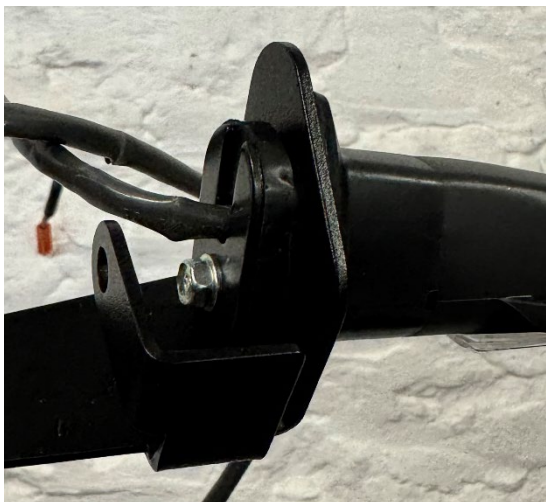


PHOTO 5

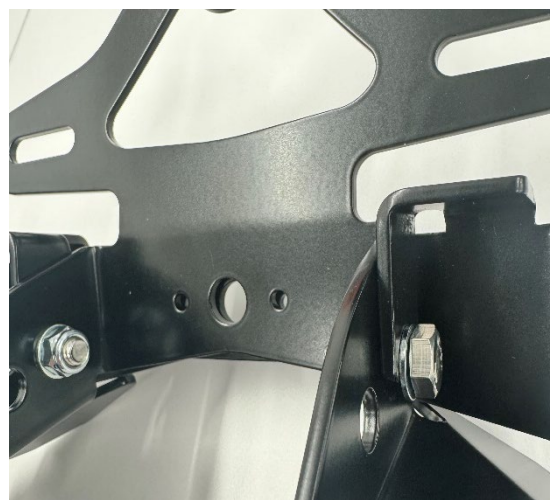


PHOTO 6



PHOTO 7



PHOTO 8



PHOTO 9



PHOTO 10



PHOTO 11



PHOTO 12



PHOTO 13



PHOTO 14



PHOTO 15



PHOTO 16



RETIRER/DESSERRER/DÉCONNECTER AVANT LE MONTAGE

- LES DEUX SIÈGES (RETIRER) **RÉINSTALLER APRÈS LE MONTAGE DU SUPPORT R&G**
- PLASTIQUES LATÉRAUX (DESERRER) **RÉINSTALLER APRÈS LE MONTAGE DU SUPPORT R&G**
- SOUS-CHÂSSIS ARRIÈRE EN PLASTIQUE (RETIRER) **RÉINSTALLER APRÈS LE MONTAGE DU SIPPOT R&G**
- SUPPORT DE PLAQUE D'IMMATRICULATION D'ORIGINE (RETIRER) **À NE PAS RÉUTILISER**
- CONNECTEURS D'INDICATEURS (DÉCONNECTER) **RÉINSTALLER APRÈS LE MONTAGE DU R&G TAIL TIDY**
- PLAQUE D'IMMATRICULATION (RETIRER) **RÉUTILISER SUR LE SUPPORT R&G**
- PROTECTION D'ÉCHAPPEMENT (RETIRER) **RÉUTILISER SUR LE SUPPORT R&G**
- COUVERCLES D'ÉCHAPPEMENT EN PLASTIQUE (RETIRER) **RÉUTILISER SUR LE SUPPORT R&G**
- CLIGNOTANTS (RETIRER) **N'OUBLIEZ PAS L'ORIENTATION D'ORIGINE. RÉUTILISER SUR LE SUPPORT R&G**

NOTICE DE MONTAGE

Une fois la liste de pré-montage terminée, le montage du support R&G peut commencer.

10. Commencez par installer les clignotants du bon côté du support de clignotant (ARTICLE 15), suivez l'ordre des photos pour faciliter le montage correct.
 - PHOTO 1 : installez l'entretoise en caoutchouc d'origine, insérez le support métallique et le fil à travers.
 - PHOTO 2 : tirez le fil à travers et poussez l'entretoise métallique à travers.
 - PHOTO 3 : installez l'entretoise de clignotant R&G (ARTICLE 19) coupée pour faciliter.
 - PHOTO 4 : poussez le clignotant et serrez le boulon.
 - PHOTO 5 : répétez de l'autre côté.
11. Une fois les clignotants installés, vous devez placer les boulons à tête hexagonale (ARTICLE 16), les rondelles (ARTICLE 18) et les écrous (ARTICLE 18) à travers le support de plaque d'immatriculation (ARTICLE 1) et insérer le



support de clignotant (ARTICLE 15) sur les boulons comme indiqué sur la PHOTO 6 et serrer.

12. Une fois inséré en position, l'ensemble d'éclairage de la plaque (ARTICLE 8) peut être placé à travers l'avant de l'unité de support arrière comme indiqué sur la PHOTO 7 et serré (ASSUREZ-VOUS QUE LES CÂBLES D'ÉCLAIRAGE SOIENT PROTÉGÉS AVEC LE RÉTRACTABLE THERMIQUE FOURNI, UTILISEZ UN PISTOLET THERMIQUE POUR APPLIQUER).
13. Connectez les deux protections d'échappement en plastique d'origine à l'aide des vis d'origine aux supports latéraux gauche et droit de la plaque d'immatriculation (ARTICLE 2/ARTICLE 3) comme indiqué sur la PHOTO 8-9.
14. Montez les protections d'échappement en plastique d'origine maintenant assemblés sur le support arrière à l'aide de deux rondelles (ARTICLE 5) et de deux écrous nyloc (ARTICLE 14) comme indiqué sur la PHOTO 10 (NE SERREZ PAS ENCORE COMPLÈTEMENT).
15. Une fois monté, connectez la protection d'échappement d'origine des deux côtés en l'insérant en place et comme indiqué sur la PHOTO 11.
16. Le support arrière est maintenant entièrement assemblé. Ensuite, il y a une gestion des câbles, utilisez la PHOTO 11 / 12 pour voir comment il doit être correctement attaché à l'aide de (ARTICLE 13 / 10).
17. L'étape suivante consiste à monter l'ensemble sur la moto. Faites glisser l'ensemble en position en vous assurant que tous les trous de montage et les boulons d'origine de la protection thermique d'échappement soient alignés. Utilisez les boulons et les rondelles comme indiqué sur la PHOTO D'ENSEMBLE (ARTICLE 4 / 6) et rondelles (ARTICLE 5), utilisez les PHOTOS 13 / 14 pour vous aider, puis serrez en utilisant le réglage du couple de serrage à la page 2.
18. Maintenant que le support arrière est solidement fixé, il est temps de connecter les câbles des clignotants/éclairage de la plaque d'immatriculation. Tout d'abord, connectez le connecteur d'éclairage de la plaque d'immatriculation (ARTICLE 7), **CONNECTEUR MÂLE NOIR DANS LE CONNECTEUR FEMELLE**



ROUGE ET CONNECTEUR MÂLE ROUGE DANS LE CONNECTEUR FEMELLE NOIR.
Connectez ensuite l'extrémité de la fiche orange de (ARTICLE 7) au connecteur d'éclairage de plaque d'immatriculation blanc d'origine comme indiqué sur la PHOTO 15. Reconnectez maintenant les fiches des clignotants dans les connecteurs de couleur correspondante comme indiqué sur la PHOTO 16.
Vérifiez que tous les feux et clignotants fonctionnent.

Maintenant que le support R&G est installé, il est temps de réinstaller tous les composants d'origine qui ont été retirés au début du processus. N'oubliez pas de vous référer au début des instructions à la page 7 (RETIRER/DESSERRER/DÉCONNECTER AVANT LE MONTAGE)).

IMPORTANT : POUR PLUS DE SÉCURITÉ, ASSUREZ-VOUS QUE LA PLAQUE D'IMMATRICULATION SOIT PLACÉE AUSSI HAUT QUE POSSIBLE SUR LE SUPPORT ARRIÈRE (CELA PEUT NÉCESSITER DE PERÇER). SI VOUS MONTEZ UNE PLAQUE D'IMMATRICULATION DE 200 MM OU PLUS (Y COMPRIS TOUT CARÉNAGE OU FIXATION DE RÉFLECTEUR) SUR LE SUPPORT, AVANT DE CONDUIRE, COMPRIEZ COMPLÈTEMENT LA SUSPENSION POUR VOUS ASSURER QU'AUCUNE PARTIE DE L'ENSEMBLE NE PUISSE ENTRER EN CONTACT AVEC LE PNEU PENDANT QUE LE VÉHICULE EST EN MOUVEMENT OU SOUS CHARGE. IL EST DE VOTRE RESPONSABILITÉ DE VÉRIFIER CETTE POSSIBILITÉ ET DE PRENDRE DES MESURES POUR L'ÉVITER. LE NON-RESPECT DE CETTE VÉRIFICATION PEUT ENTRAÎNER DES BLESSURES GRAVES OU DES DOMMAGES À LA MOTO.

ISSUE 1 – 18/12/2024 (JH)

CONSUMER NOTICE

The catalogue description and any exhibition of samples are only broad indications of the Products and R&G may make design changes which do not diminish their performance or visual appeal and supplying them in such state shall conform to the order. The Buyer acknowledges no representation or warranty (other than as to title) has been given or will apply to the Products other than those in R&G's order or confirmation and the Buyer confirms it has chosen the Products as being of merchantable quality and suitable for its particular purposes. Where R&G fits the Products or undertakes other services it shall exercise reasonable skill and care and rectify any fault free of charge unless the workmanship has been disturbed. The Buyer is responsible for ensuring that the warranty on the motorcycle is not affected by the fitting of the Products. On return of any defective Products R&G shall at its option either supply a replacement or refund the purchase money but shall not be liable if the Products have been modified or used or maintained otherwise than in accordance with R&G's or manufacturer's instructions and good engineering practice or if the defect arises from accident or neglect. Other than identified above and subject to R&G not limiting its liability for causing death and personal injury, it shall not be liable for indirect or consequential loss and otherwise its liability shall be limited to the amounts paid by the Buyer for the Products or the fitting or service concerned. These terms do not affect the Buyer's statutory rights.

R&G RACING RETURNS POLICY (NON-FAULTY GOODS)

Returns must be pre-authorized (if not pre-authorized the return will be rejected). Goods may only be returned direct to us if they were purchased direct from us (customer must prove if necessary). Otherwise to be returned to original vendor. Goods must be in re-sellable condition, in the opinion of R&G Racing. All returns are subject to a 25% restocking and handling fee (25% of the gross value exc. P&P – at the prevailing price at time of purchase). The customer must pay any and all carriage charges. No returns of discontinued products, unless within 14 days of purchase. This policy does not affect your statutory rights and does not refer to faulty goods.

Racing Technique Ltd t/A R&G
Unit 1, Shelleys Lane, East Worldham, Alton, Hampshire, GU34 3AQ
Tel: +44 (0)1420 89007 www.rg-racing.com Email: info@rg-racing.com

