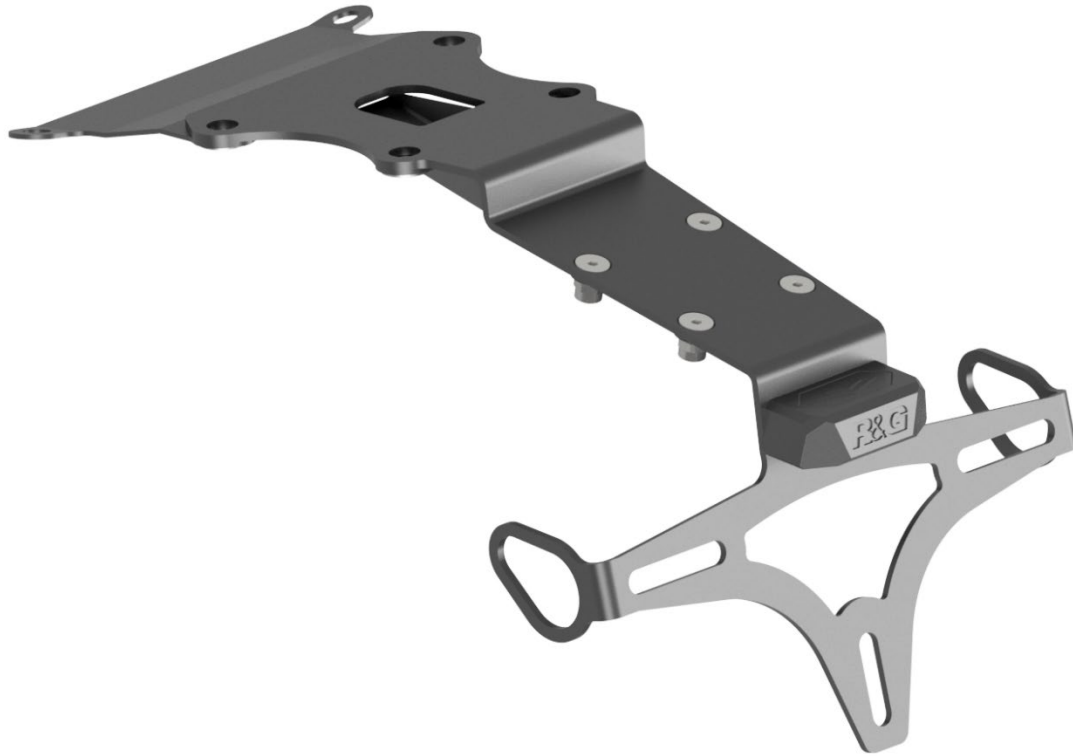




FITTING INSTRUCTIONS FOR LP0401 LICENCE PLATE BRACKET



This kit contains the items pictured and labelled over page.

Some parts may be shown for clarity of instructions only.

Do not proceed until you are sure all parts are present.

Please read all instructions before proceeding.

**IF IN ANY DOUBT WHEN FITTING OUR PRODUCTS, CONSULT ONE OF OUR DEALERS
OR HAVE FITTED BY A QUALIFIED TECHNICIAN.**

Please note that the way the kit is packed does not necessarily represent the way of mounting to the bike.

In the event of rubber washers being used to hold components onto bolts, these rubber washers can be thrown away.



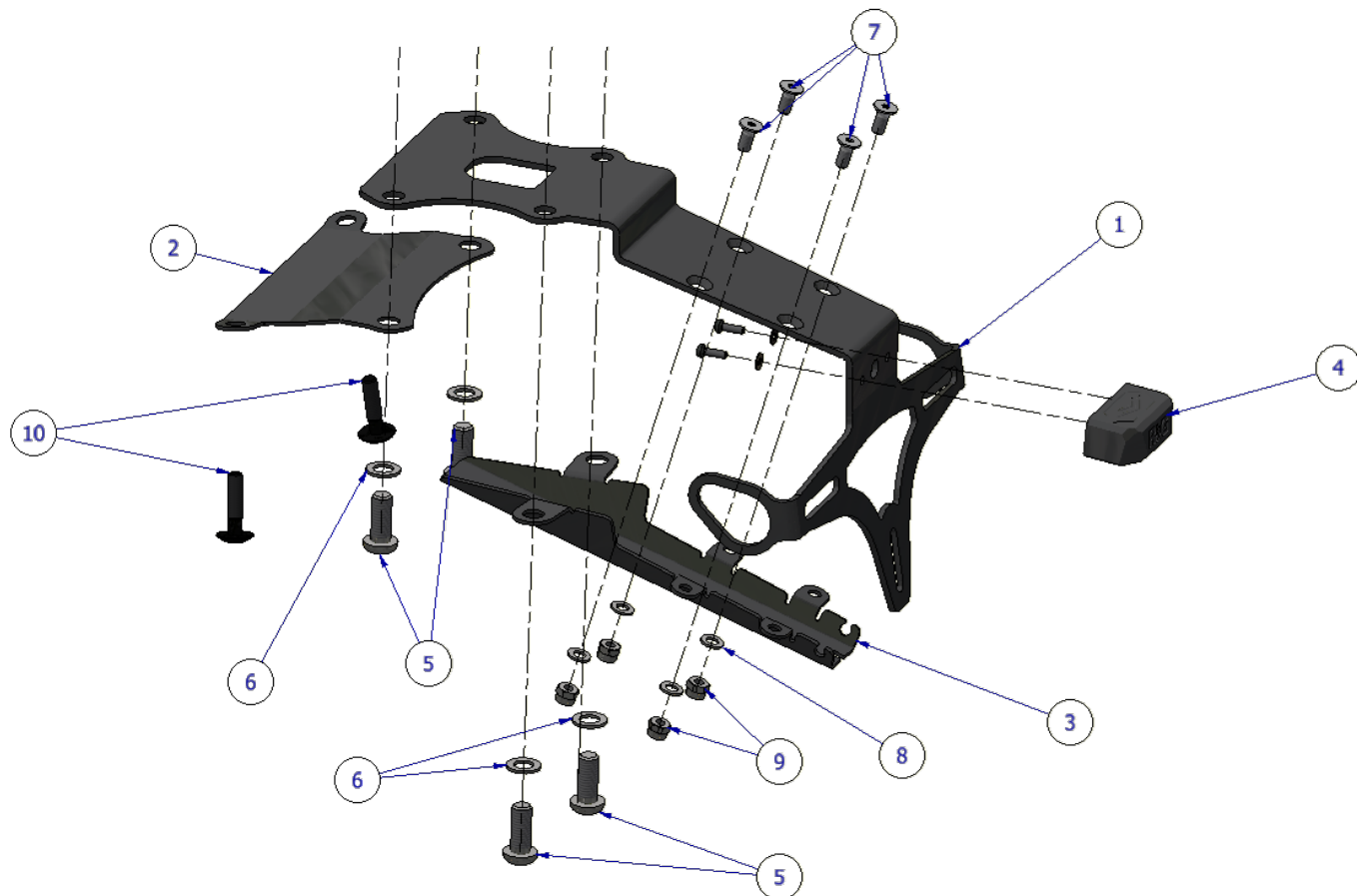
<u>TOOLS REQUIRED</u>	<u>GENERAL TORQUE SETTINGS</u>
<ul style="list-style-type: none"> Set of metric Hex keys to include 5mm. Set of metric sockets and wrench. To include 8mm, 10mm & 12mm. <ul style="list-style-type: none"> Cable cutters Phillips screwdriver 	M4 BOLT = 8Nm M5 BOLT = 12Nm M6 BOLT = 15Nm M8 BOLT = 20Nm M10 BOLT = 40Nm M12 BOLT = 40Nm

LEGEND

ITEM No.	DESCRIPTION	QTY
ITEM 1	TAIL TIDY BRACKET (TB0401 PART 1)	1
ITEM 2	COVER PLATE (TB0401 PART 2)	1
ITEM 3	WIRING COVER PLATE (TB0401 PART 3)	1
ITEM 4	LICENSE PLATE LIGHT INCLUDING BOLTS & SPACERS (LA0012)	1
ITEM 5	M8 x 20mm BOLT	4
ITEM 6	M8 WASHER	4
ITEM 7	M5 x 12mm BOLT	4
ITEM 8	M5 WASHER	4
ITEM 9	M5 NUT	4
ITEM 10	OEM PLASTIC POPPERS	2
ITEM 11	LICENSE PLATE LIGHT CONNECTOR (CON027 – NOT SHOWN)	1
ITEM 12	HEAT SHRINK (NOT SHOWN)	1



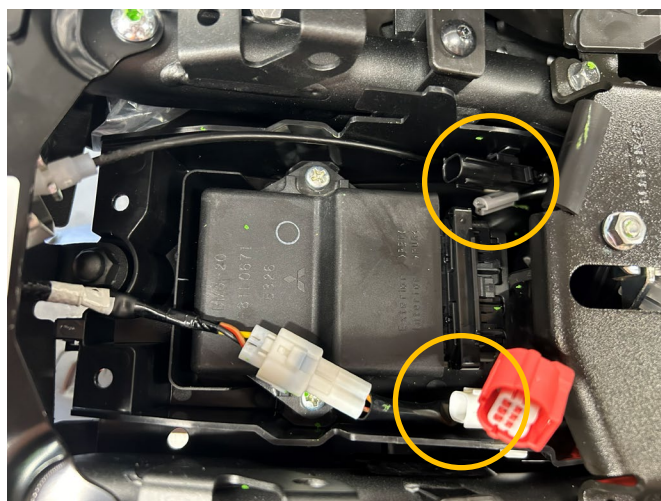
Assembly Diagram



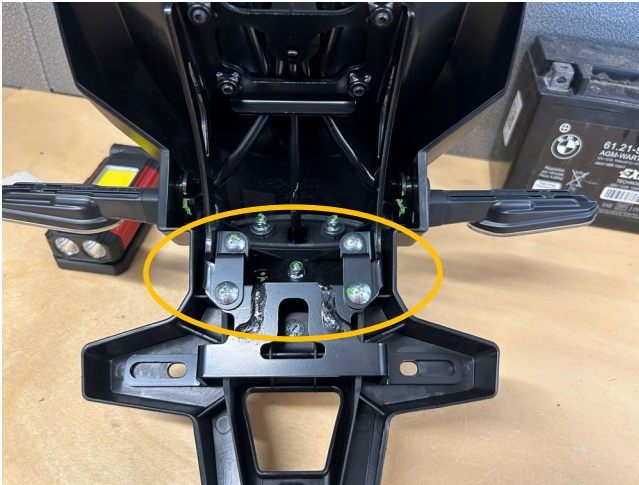
FITTING PICTURES



Picture 1



Picture 2



Picture 3



Picture 4

FITTING GUIDE

Disassembly Instructions:

- Remove the 2 black plastic poppers circled in **ORANGE** in **Picture 1** and keep them for re-use later.
- Remove the rear seat and unplug the 3x connectors circled in **ORANGE** in **Picture 2**.
- Now remove the bolts holding the OEM tail unit in place, while supporting the tail unit assembly to prevent it falling.
- Remove the indicators from the OEM tail unit. It will be necessary to disassemble the OEM tail unit to do so, all visible fixings must be removed (see **Pictures 3 & 4**).

Assembly Instructions:

- Using the supplied 100mm heat shrink (**Item 12**), cover the license plate light wires and secure the license plate light (**Item 4**) to the main tail tidy bracket (**Item 1**). **Please use the supplied spacers & bolts to ensure the light clears any plate frame installed and fully illuminates the number plate.**
- Attach the OEM indicators to the main tail tidy bracket, and connect the License plate light connector (**Item 11**) to the license plate light (**Item 4**). You can then pass the wires through the cutout in the main bracket.
- The wires can now be covered using **Item 3**. Attach **Item 3** to the underside of **Item 1** using the M5 bolts, washers & nuts (**Items 7, 8 & 9**) as shown in the assembly diagram, ensuring no wires are pinched between the brackets.
- Passing the wires thorough the hole arrowed in **Picture 1**, hold the assembly to the undertray of the bike (shown in **Picture 1**) and attach it to the bike using the most rearward 2 mounts (circled in **RED** in **Picture 1**), using 2x of the M8 bolts & M8 washers (**Items 5 & 6**), passing them through both **Item 3** and **Item 1**.
- Fit the license plate connector and indicators to the OEM wiring harness.



- Test the indicators and license plate illuminator to ensure they are working correctly, if not the connectors may need to be swapped around.
- Now fit Item 2 to the underside of the bike using the remaining M8 bolts & washers (**Items 5 & 6**) and the 2x OEM plastic poppers (**Item 10**) that you removed earlier, as shown in the assembly diagram.
- Fully tighten the bolts to their required torque.
- Refit the rear seat.

IMPORTANT: FOR SAFETY, ENSURE THE LICENCE PLATE IS PLACED AS HIGH AS POSSIBLE ON THE TAIL TIDY (IT MAY REQUIRE DRILLING). IF FITTING A LICENCE PLATE OF 200MM OR LONGER (INCLUDING ANY SHROUD OR REFLECTOR ATTACHMENT) TO THE BRACKET, BEFORE RIDING, FULLY COMPRESS THE SUSPENSION TO ENSURE NO PART OF THE ASSEMBLY CAN CONTACT THE TYRE WHILE THE VEHICLE IS IN MOTION OR UNDER LOAD. IT IS YOUR RESPONSIBILITY TO CHECK FOR THIS POSSIBILITY AND TAKE AVOIDING ACTION. FAILURE TO CHECK THIS COULD RESULT IN SERIOUS INJURY OR DAMAGE TO THE MOTORCYCLE.

ISSUE 2 – 14/01/2026 (MH)

CONSUMER NOTICE

The catalogue description and any exhibition of samples are only broad indications of the Products and R&G may make design changes which do not diminish their performance or visual appeal and supplying them in such state shall conform to the order. The Buyer acknowledges no representation or warranty (other than as to title) has been given or will apply to the Products other than those in R&G's order or confirmation and the Buyer confirms it has chosen the Products as being of merchantable quality and suitable for its particular purposes. Where R&G fits the Products or undertakes other services it shall exercise reasonable skill and care and rectify any fault free of charge unless the workmanship has been disturbed. The Buyer is responsible for ensuring that the warranty on the motorcycle is not affected by the fitting of the Products. On return of any defective Products R&G shall at its option either supply a replacement or refund the purchase money but shall not be liable if the Products have been modified or used or maintained otherwise than in accordance with R&G's or manufacturer's instructions and good engineering practice or if the defect arises from accident or neglect. Other than identified above and subject to R&G not limiting its liability for causing death and personal injury, it shall not be liable for indirect or consequential loss and otherwise its liability shall be limited to the amounts paid by the Buyer for the Products or the fitting or service concerned. These terms do not affect the Buyer's statutory rights.

R&G RACING RETURNS POLICY (NON-FAULTY GOODS)

Returns must be pre-authorized (if not pre-authorized the return will be rejected). Goods may only be returned direct to us if they were purchased direct from us (customer must prove if necessary). Otherwise to be returned to original vendor. Goods must be in re-sellable condition, in the opinion of R&G Racing. All returns are subject to a 25% restocking and handling fee (25% of the gross value exc. P&P – at the prevailing price at time of purchase). The customer must pay any and all carriage charges. No returns of discontinued products, unless within 14 days of purchase. This policy does not affect your statutory rights and does not refer to faulty goods.