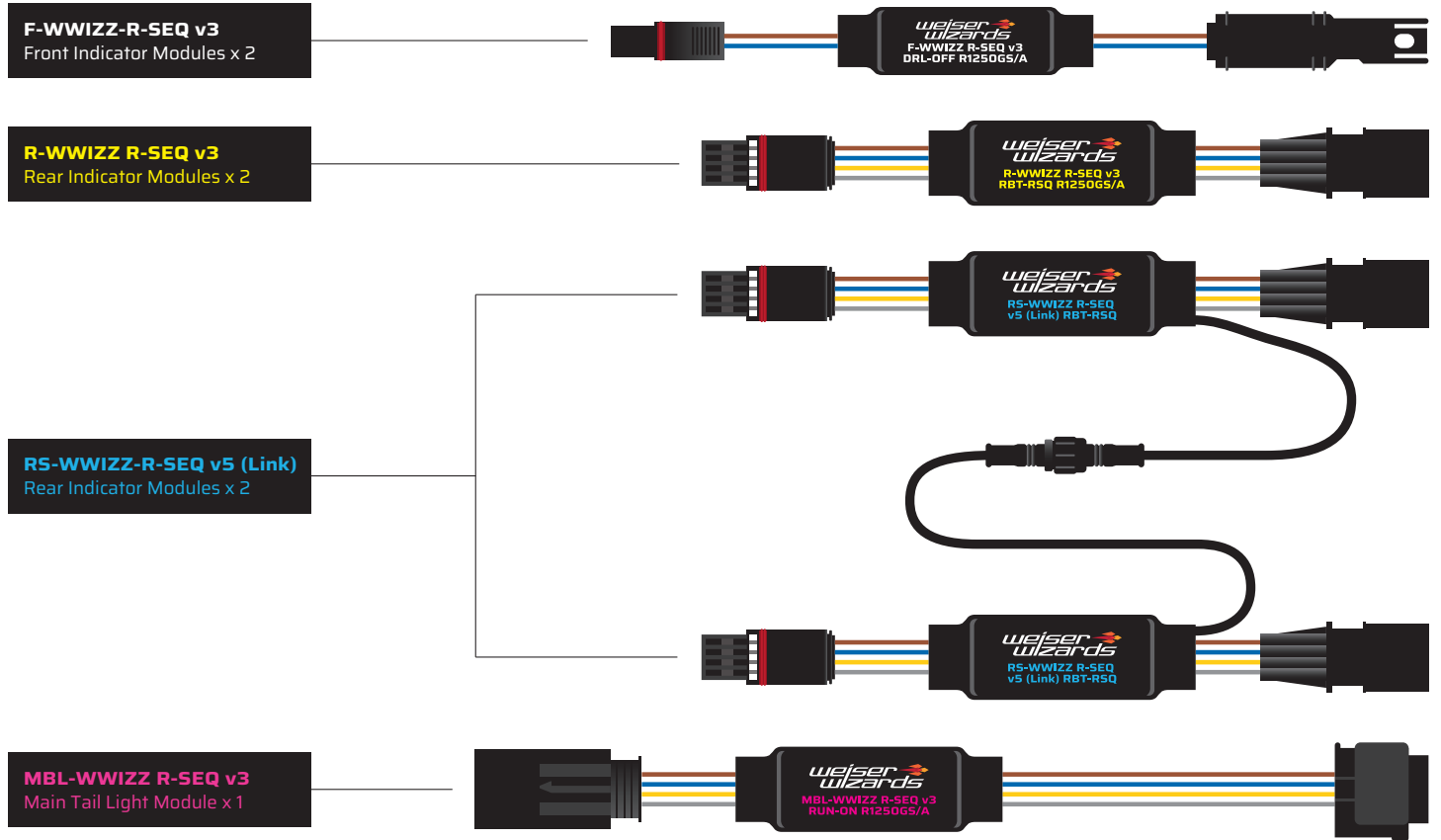


# INSTALLATION INSTRUCTIONS



## BMW OEM Multifunction Indicator and Tail Light Re-Sequencing Modules



- F-WWIZZ-R-SEQ v3** (Front Indicator Modules): Compatible with BMW R1250 GS/A 2021-24
- R-WWIZZ R-SEQ v3** (Rear Indicator Modules): Compatible with BMW R1250 GS/A 2021-24
- MBL-WWIZZ R-SEQ v3** (Tail Light Module): Compatible with BMW R1250 GS/A 2021-24
- RS-WWIZZ-R-SEQ v5 (Link)** (Rear Modules): Compatible with BMW R1300 GS 2024+ / S Series R/RR/XR 2020+ / BMW M Series all models 2023+ / BMW F900 GS 2024+



The current range of modules is not compatible with BMW North American specification multifunction rear lights. Installation of these Plug + Play modules is very simple and full video instructions are available online via the QR code here or on the install section of our website: [weisertechnik.co.uk](http://weisertechnik.co.uk)



### Key Features:

- 100% Plug & Play
- Retain OEM BMW indicators
- Plugs directly inline to bikes indicator/tail light connectors
- Innovative microcontroller design solution
- No reprogramming necessary
- BMW CANbus compatible
- No fault codes guaranteed
- Easy to install
- 4 Year Warranty



Designed & Manufactured in the UK

# REAR INDICATOR MODULE INSTALLATION

## R-WWIZZ R-SEQ v3 - (BMW R1250GS/A)

The Weiser Wizards Rear set includes 2 x rear indicator modules which cancel out both running and brake lights when indicating leaving only the amber indicator light...clearly visible on that side.

Remove body panels to gain access to your bikes rear indicator connectors. You may need to cut zip ties to do this (replacements provided). Release the OEM indicators from their connectors. Put the indicators to one side whilst you connect the modules. Plug the WEISER 'Wizard' modules into where you released the indicator from. Then plug the indicators back into the other end of the 'Wizard' modules. TEST indicator functions to make sure you have the connectors fitted correctly. That's it! Re zip tie to tidy your install. If you are installing the rear tail light module do it now. If not replace body panels.



↑ Plug module into bike here    Plug indicator back into module here ↑



Installing Rear Wizard modules

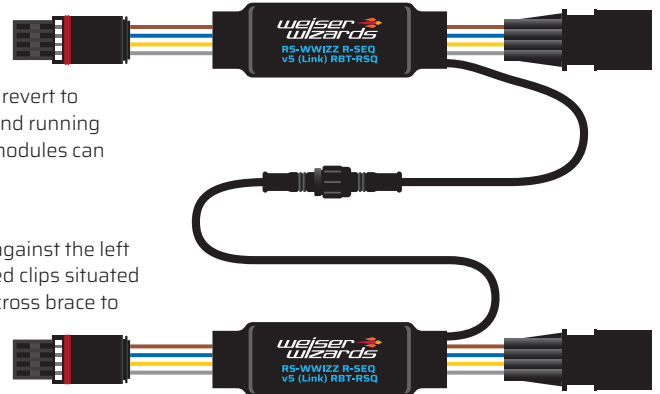
## RS-WWIZZ-R-SEQ v5 (Link)

The updated RS-WWIZZ R-SEQ V5 module is designed to improve the functionality of the previous V4 module when fitted to a motorcycle without an OEM center brake light (such as the S1000 models and the new R1300 GS).

This linked module version allows the added functionality of allowing the operation to revert to OEM functionality when the hazard light function is switched on (The hazards, brake and running lights will operate all together). If you have an auxiliary brake/running light fitted the modules can be unlinked to give a clearer indicating and hazard function.

Installation is the same as the R-WWIZZ R-SEQ V3 modules described above.

In this instance on the R1300 GS both left and right indicator connectors are installed against the left hand side of the bike under the seat release cable. These are clipped into silver coloured clips situated either side of the bikes 'left to right' cross brace. You should remove the 4 bolts in this cross brace to get good access and this will aid install. The modules can also be unlinked if required to help install. If you are using the modules when unlinked; we recommend sealing the cable connectors with electrical tape to keep the connections clean.



# MAIN TAIL LIGHT MODULE INSTALLATION

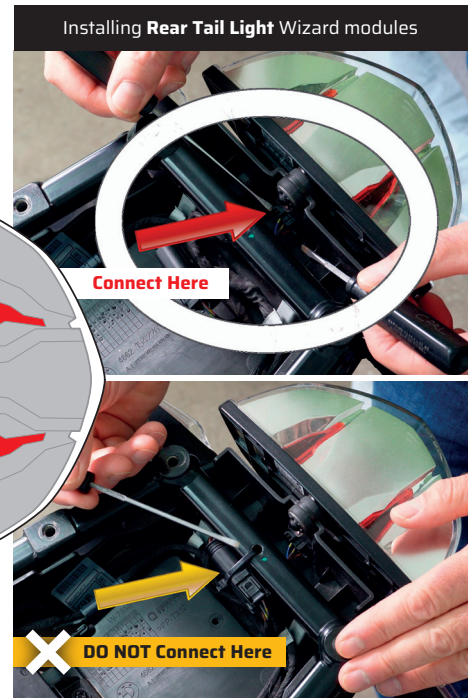
## MBL-WWIZZ R-SEQ v3 - (BMW R1250GS/A)

The Weiser Wizards Tail Light set includes 1 x tail light module, this reactivates the central missing main rear running light function decommissioned on the 21-24 R1250 GS/A models.

After removing body panels to gain access to the indicators you can also access the tail light in the same way. Remove the tail light connector, you may have to cut a zip tie (replacements provided). Plug the WEISER 'Wizard' module directly into the tail light. Going to the other end of the module take the connector that came from the tail light and plug that into the 'Wizard' module completing the circuit. TEST brake light functions to make sure you have the connectors fitted correctly. That's it! Zip tie wiring to tidy your install. If you are fitting rear indicator modules do them now, then replace body panels.



↑ Plug connector from tail light here    Plug module directly into tail light connector  
Do not plug into any other connector



Installing Rear Tail Light Wizard modules

# FRONT INDICATOR MODULE INSTALLATION

## F-WWIZZ R-SEQ v3 - (BMW R1250GS/A)

The Weiser Wizards Front set includes 2 x front indicator modules which cancel out the 'always on' low level amber day/night time running lights. Only the indicators activate...clearly.

Remove body panels to gain access to your bikes front indicator connectors. You may need to cut zip ties to do this (replacements provided). Release the OEM indicators from their connectors. Put the indicators to one side whilst you connect the modules. Plug the WEISER 'Wizard' modules into where you released the indicators from. Then plug the indicators themselves back into the other end of the 'Wizard' modules. TEST the indicator functions to make sure you have the connectors fitted correctly. That's it! Re zip tie to tidy your install. Replace body panels.



↑ Plug module into bike here    Plug indicator back into module here ↑



Installing Front Wizard modules