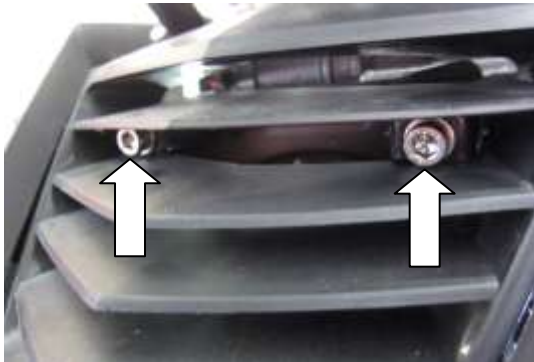
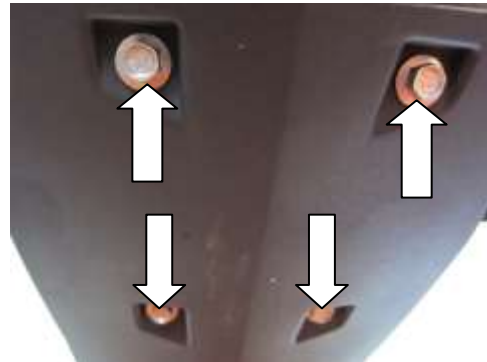




FITTING INSTRUCTIONS FOR ECC0114 LHS ENGINE CASE COVER
KTM DUKE 125 2011-



PICTURE 1



PICTURE 2



PICTURE 3

R&G RACING

Unit 1 Shelleys Lane, East Worldham, Alton, Hants GU34 3AQ
Tel: +44 (0)1420 89007 Fax: +44 (0)1420 87301 www.rg-racing.com Email: info@rg-racing.com



In this kit there should be
1 x Engine Case Cover (ECC0114).
4 x M6x40mm long button head bolts.
3 x M6 Washers

PLEASE READ THESE INSTRUCTIONS FULLY BEFORE STARTING

- Please make sure the engine is cold before proceeding with the fitting of the R&G cover.
- Remove the belly-pan (you will need to remove the bolts arrowed in pictures 1 and 2).
- Remove the four engine case bolts arrowed above in picture 3. Hold the cover loosely over the case to help identify the correct ones. **DO NOT REMOVE ALL OF THE CASE BOLTS.**
- Offer up the R&G cover to the engine and carefully fit it over the engine casing. Ensure that the three R&G bolt holes are lined up with the holes in the engine casing, and then push on as far as it will go.
- With a 4mm Allen key tighten the bolts with washers equally so that they pull the cover into place. **DO NOT FULLY TIGHTEN.**
- Finally use a torque wrench set at 10 nm (7 Lb ft) to fully tighten.
- Refit the belly-pan.
- It is suggested that you check the tightness of the mounting bolts on a regular basis i.e. when cleaning or once a month.
- NOTE for the cleaning of this product you should only use a soft polishing cloth and a mild general cleaning agent
- **AVOID HARMFUL CHEMICALS IF IN DOUBT DO NOT USE AS THEY COULD ALTER THE STRENGTH OF THE COVER.**
- R&G will accept no liability if the above procedure and torque settings are not followed.

Issue 1 24/10/2011 (NSY)

CONSUMER NOTICE

The catalogue description and any exhibition of samples are only broad indications of the Products and R&G may make design changes which do not diminish their performance or visual appeal and supplying them in such state shall conform to the order. The Buyer acknowledges no representation or warranty (other than as to title) has been given or will apply to the Products other than those in R&G's order or confirmation and the Buyer confirms it has chosen the Products as being of merchantable quality and suitable for its particular purposes. Where R&G fits the Products or undertakes other services it shall exercise reasonable skill and care and rectify any fault free of charge unless the workmanship has been disturbed. The Buyer is responsible for ensuring that the warranty on the motorcycle is not affected by the fitting of the Products. On return of any defective Products R&G shall at its option either supply a replacement or refund the purchase money but shall not be liable if the Products have been modified or used or maintained otherwise than in accordance with R&G's or manufacturer's instructions and good engineering practice or if the defect arises from accident or neglect. Other than identified above and subject to R&G not limiting its liability for causing death and personal injury, it shall not be liable for indirect or consequential loss and otherwise its liability shall be limited to the amounts paid by the Buyer for the Products or the fitting or service concerned. These terms do not affect the Buyer's statutory rights.

R&G RACING RETURNS POLICY (NON-FAULTY GOODS)

Returns must be pre-authorized (if not pre-authorized the return will be rejected). Goods may only be returned direct to us if they were purchased direct from us (customer must prove if necessary). Otherwise to be returned to original vendor. Goods must be in re-sellable condition, in the opinion of R&G Racing. All returns are subject to a 25% restocking and handling fee (25% of the gross value exc. P&P – at the prevailing price at time of purchase). The customer must pay any and all carriage charges. No returns of discontinued products, unless within 14 days of purchase. This policy does not affect your statutory rights and does not refer to faulty goods.

R&G RACING

Unit 1 Shelleys Lane, East Worldham, Alton, Hants GU34 3AQ
Tel: +44 (0)1420 89007 Fax: +44 (0)1420 87301 www.rg-racing.com Email: info@rg-racing.com



INSTRUCTIONS DE MONTAGE POUR ECC0114 (COTE GAUCHE)
PROTECTION CARTER MOTEUR
KTM DUKE 125 2011-

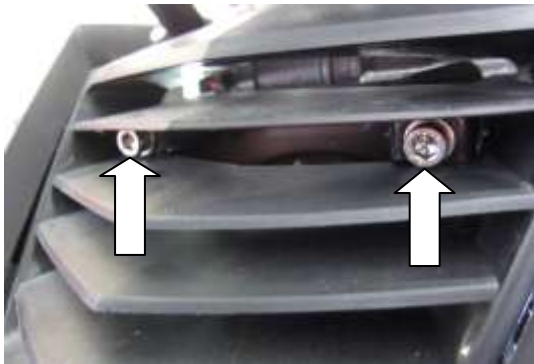


IMAGE 1

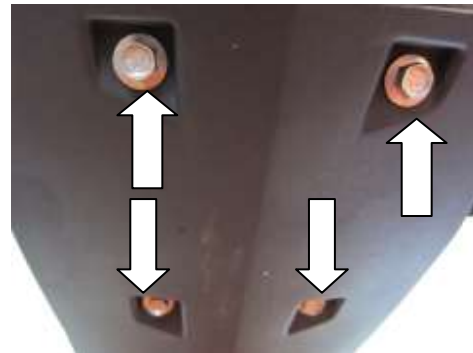


IMAGE 2



PICTURE 3

R&G RACING

Unit 1 Shelleys Lane, East Worldham, Alton, Hants GU34 3AQ
Tel: +44 (0)1420 89007 Fax: +44 (0)1420 87301 www.rg-racing.com Email: info@rg-racing.com



CE KIT CONTIENT

- 1 x Protection carter moteur (ECC0114).
- 4 x M6x40mm longs boulons à tête ronde.
- 3 x Rondelles M6

LIRE ATTENTIVEMENT LA NOTICE AVANT DE PROCEDER A L'INSTALLATION

- S'assurer que le moteur soit froid avant de procéder au montage.
- Enlever le carénage inférieur (enlevant l'ensemble des boulons comme sur les images 1 et 2)
- Enlever les 4 boulons du carter moteur comme en image 1. Appliquer brièvement la protection pour bien identifier ces boulons. **NE PAS RETIRER TOUS LES BOULONS DU MOTEUR.**
- Appliquer la protection R&G Racing au moteur en veillant à ce que sa position soit adéquate. S'assurer que les 3 trous pour boulons R&G soient bien alignés avec les trous du carter moteur. Ensuite, serrer jusqu'au bout.
- A l'aide d'une clé Allen de 4mm, serrer les boulons avec rondelles de façon identique afin que la protection se mette naturellement en place. **NE PAS SERRER AU MAXIMUM.**
- Utiliser une clé dynamométrique réglée à 10 nm (7 Lb ft) pour serrer définitivement.
- Remettre le carénage inférieur.
- Note importante:
 - vérifier le serrage des vis au moins une fois par mois.
 - Le nettoyage de la protection doit se faire à l'aide d'un produit nettoyant non agressif et à l'aide d'un chiffon doux.
- **NE PAS UTILISER D'AGENTS CHIMIQUES QUI POURRAIENT ALTERER LA RESISTANCE DE LA PROTECTION.**
- R&G décline toute responsabilité si la procédure indiquée ci-dessus et les couples de serrages ne sont pas respectés.

Issue 1 24/10/2011 (NSY)

R&G RACING

Unit 1 Shelleys Lane, East Worldham, Alton, Hants GU34 3AQ
Tel: +44 (0)1420 89007 Fax: +44 (0)1420 87301 www.rg-racing.com Email: info@rg-racing.com