



EP0023BK

**FITTING INSTRUCTIONS FOR EP0023BK EXHAUST PROTECTORS**  
**NORTON COMMANDO 961 ALL MODELS '09-**



*Left side*



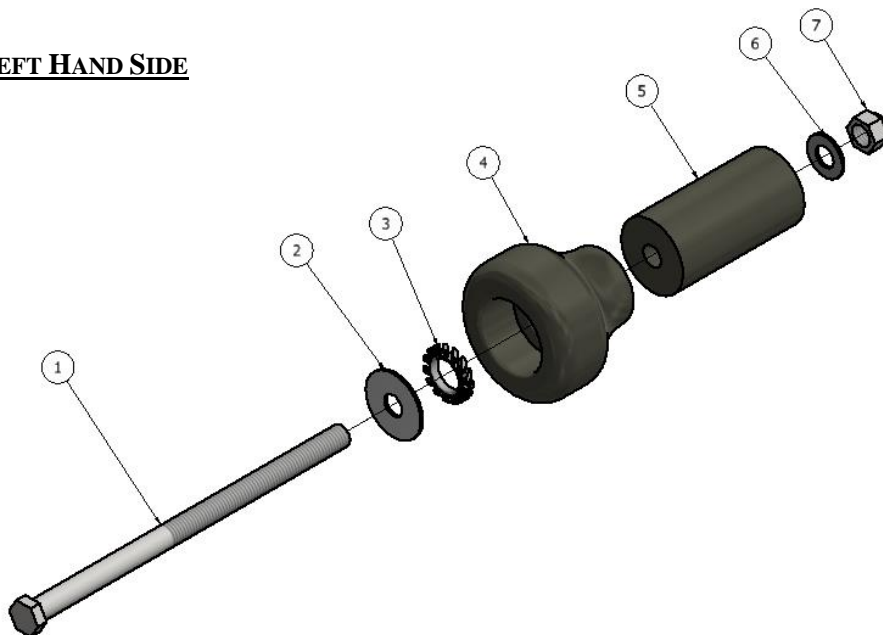
*Right side*

**THIS KIT CONTAINS THE ITEMS PICTURED AND LABELLED BELOW.**  
**DO NOT PROCEED UNTIL YOU ARE SURE ALL PARTS ARE PRESENT.**

**Please note that the way the kit is packed does not necessarily represent the way of mounting to the bike.**

Please note that in cases where kits are packed with a plastic tube separating components on the spindle bar (this tube  
THE PARTS SHOWN MAY BE REPRESENTATIVE ONLY (FOR CLARITY OF INSTRUCTIONS ONLY)

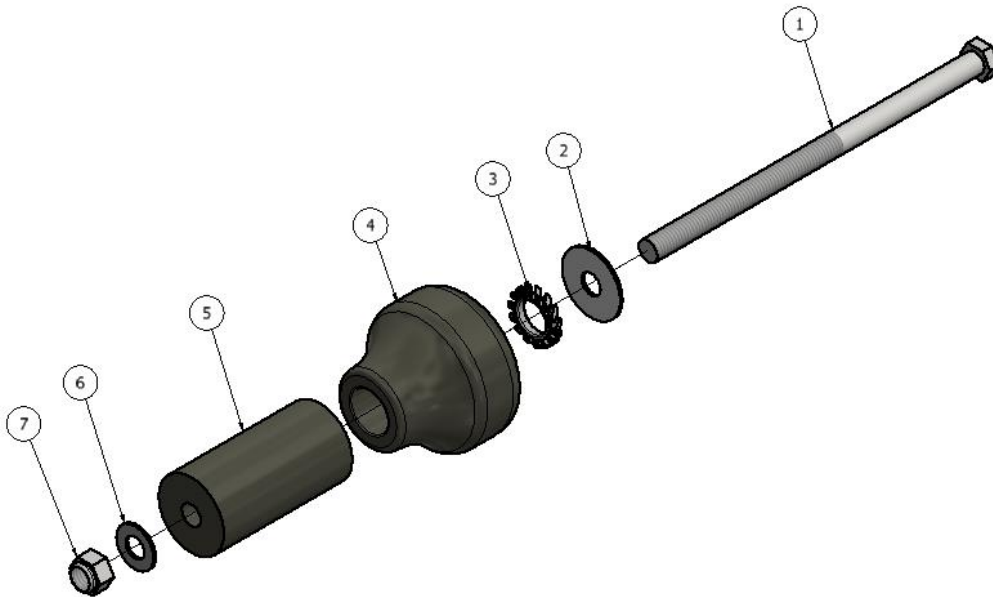
**LEFT HAND SIDE**





EP0023BK

**RIGHT HAND SIDE**



**LEGEND**

- ITEM 1 = 2 x M8 x 140mm long hex bolts
- ITEM 2 = 2 x M8 x 25mm OD washers
- ITEM 3 = 2 x Shake proof washers
- ITEM 4 = 2 x R&G Crash Bobbins (B0435BK with CS407)
- ITEM 5 = 2 x Spacers 55mm long (S0943)
- ITEM 6 = 2 x M8 x 16mm OD washers
- ITEM 7 = 2 X M8 nyloc nuts

**TOOLS REQUIRED**

- Socket set to include 1 x 13mm socket, a wrench and 13mm spanner
  - 6mm Allen key
- Torque wrench up to 20Nm.



EP0023BK



OEM lock nut and washer

Silencer hanger mount

OEM silencer hanger bolt

Illustration 1



Silencer hanger mount

Silencer hanger

M8 140mm bolt, M8x25mm OD washer and a shake proof washer to be inserted here

Illustration 2



Silencer hanger mount

M8x16mm OD washer and nyloc nut

Silencer hanger

Illustration 3



EP0023BK

### **FITTING INSTRUCTIONS**

- Starting from L/H (as you sit on bike), Using a 6mm allen key and a 13mm spanner, remove the original silencer hanger bolt, washer and locking nut (Illustration 1)
- Feed the M8x140mm hex head bolt (Item 1) with M8x25mm washer (Item 2), shake proof washer (Item 3), R&G Bobbin (Item 4) and a 55m long spacer (Item 5) through the hanger mount and silencer hanger (Illustration 2)
- Fit the M8x16mm washer (Item 6) and M8 Nyloc nut (Item 7) onto the thread and tighten until the nut is engaged in nylon (Illustration 3)
- Using 13mm spanner and a torque wrench, tighten the nyloc nut to 20Nm.
- Repeat the procedure for R/H exhaust protector

ISSUE 1 24/02/2016 (HH)

### **CONSUMER NOTICE**

The catalogue description and any exhibition of samples are only broad indications of the Products and R&G may make design changes which do not diminish their performance or visual appeal and supplying them in such state shall conform to the order. The Buyer acknowledges no representation or warranty (other than as to title) has been given or will apply to the Products other than those in R&G's order or confirmation and the Buyer confirms it has chosen the Products as being of merchantable quality and suitable for its particular purposes. Where R&G fits the Products or undertakes other services it shall exercise reasonable skill and care and rectify any fault free of charge unless the workmanship has been disturbed. The Buyer is responsible for ensuring that the warranty on the motorcycle is not affected by the fitting of the Products. On return of any defective Products R&G shall at its option either supply a replacement or refund the purchase money but shall not be liable if the Products have been modified or used or maintained otherwise than in accordance with R&G's or manufacturer's instructions and good engineering practice or if the defect arises from accident or neglect. Other than identified above and subject to R&G not limiting its liability for causing death and personal injury, it shall not be liable for indirect or consequential loss and otherwise its liability shall be limited to the amounts paid by the Buyer for the Products or the fitting or service concerned. These terms do not affect the Buyer's statutory rights.

### **R&G RACING RETURNS POLICY (NON-FAULTY GOODS)**

Returns must be pre-authorized (if not pre-authorized the return will be rejected). Goods may only be returned direct to us if they were purchased direct from us (customer must prove if necessary). Otherwise to be returned to original vendor. Goods must be in re-sellable condition, in the opinion of R&G Racing. All returns are subject to a 25% restocking and handling fee (25% of the gross value exc. P&P – at the prevailing price at time of purchase). The customer must pay any and all carriage charges. No returns of discontinued products, unless within 14 days of purchase. This policy does not affect your statutory rights and does not refer to faulty goods.

R&G Racing  
Unit 1, Shelley's Lane, East Worldham, Alton, Hampshire, GU34 3AQ  
Tel: +44 (0)1420 89007 Fax: +44 (0)1420 87301 [www.rg-racing.com](http://www.rg-racing.com) Email: [info@rg-racing.com](mailto:info@rg-racing.com)



EP0023BK

**NOTICE DE MONTAGE EP0023BK PROTECTIONS ECHAPPEMENTS  
NORTON COMMANDO 961 TOUS MODELES '09-**



*Gauche*

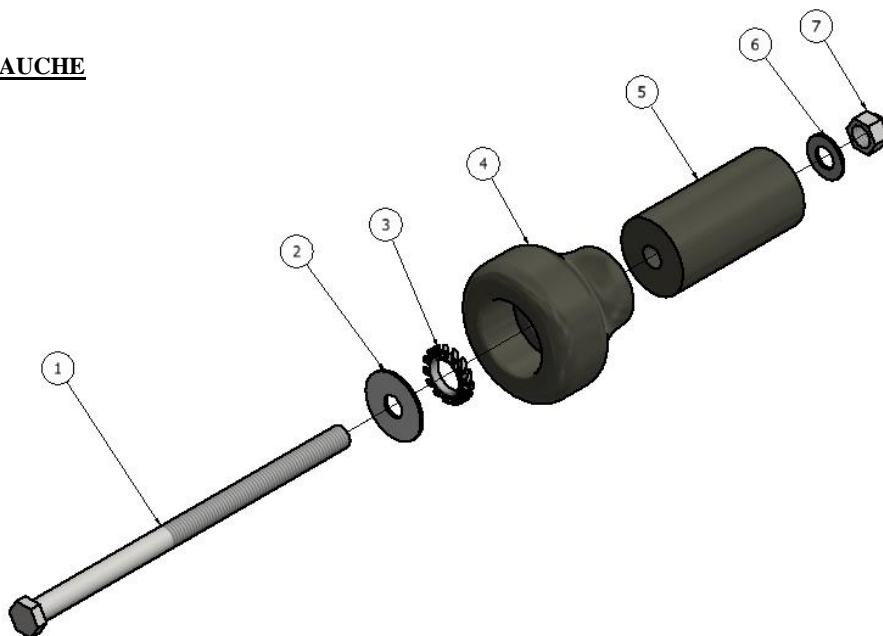
*Droite*

**LE KIT CONTIENT LES ARTICLES EXPOSES CI-DESSOUS, VERIFIER QUE TOUTES LES PIECES SOIENT PRESENTES AVANT DE PROCEDER AU MONTAGE.**

**LA FAÇON DONT LE KIT EST EMBALLE NE CORRESPOND PAS FORCEMENT A LA FAÇON DE MONTER LES PIECES SUR LA MOTO.**

Notez que si les kits sont emballés avec un tube en plastic qui sépare les composants sur l'axe, ce tube doit être jeté.

**GAUCHE**

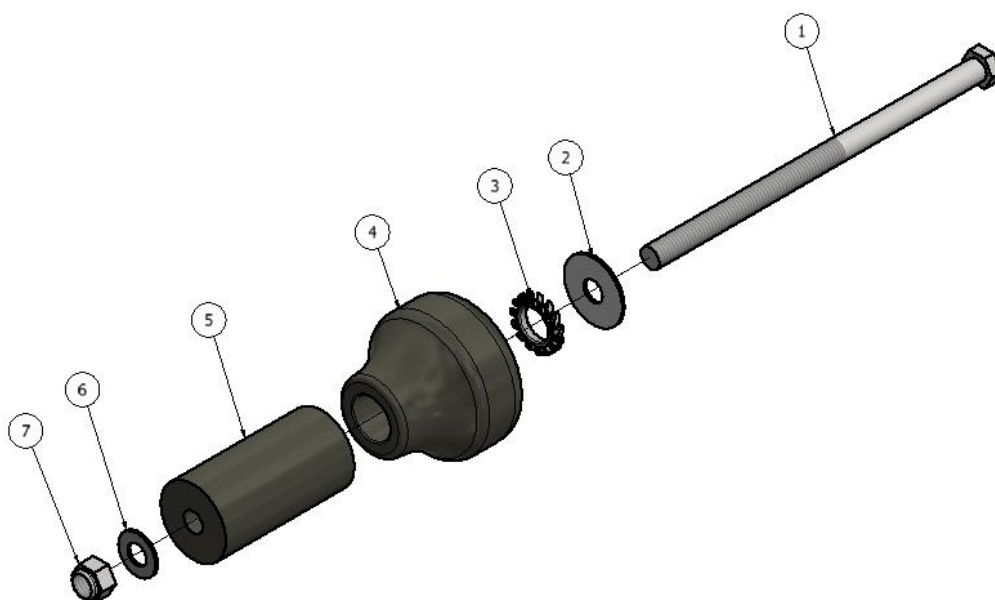






EP0023BK

**DROITE**



**LEGENDE**

- ARTICLE 1 = 2 x M8 x 140mm Boulons
- ARTICLE 2 = 2 x M8 x 25mm Rondelles
- ARTICLE 3 = 2 x Rondelles d'étanchéité
- ARTICLE 4 = 2 x R&G Bobines de protection (B0435BK avec CS407)
- ARTICLE 5 = 2 x Entretoises 55mm de long (S0943)
- ARTICLE 6 = 2 x M8 x 16mm Rondelles
- ARTICLE 7 = 2 X M8 Ecrous

**OUTILS REQUIS**

- Clé et douille et Clé à molette 1 x 13mm
  - Clé Allen 6mm
  - Clé dynamométrique à 20Nm.



EP0023BK



Illustration 1

Ecrou de blocage d'origine et rondelle

Support silencieux

Boulon d'origine du support silencieux



Illustration 2

Support fixation Silencieux

Support Silencieux

Boulon M8 140mm, Rondelle M8x25mm OD et une rondelle d'étanchéité à insérer ici.



Illustration 3

Support fixation

Rondelle M8x16mm et écrou

Support Silencieux



EP0023BK

### **NOTICE**

- Commencer du côté gauche (lorsqu'on est assis sur la moto), utiliser une clé Allen de 6mm et une clé à molette de 13mm. Enlever le boulon, la rondelle et l'écrou de blocage d'origine du support Silencieux (Illustration 1).
- Insérer le boulon M8x140mm (Article 1) et une rondelle M8x25mm (Article 2), une rondelle anti vibration (Article 3), une bobine R&G (Article 4) et une entretoise de 55mm (Article 5) dans le support de fixation et le support Silencieux (Illustration 2)
- Insérer une rondelle M8x16mm (Article 6) et un écrou M8 (Article 7) sur le filetage et serrer jusqu'à ce que l'écrou soit engagé dans le nylon (Illustration 3)
- Utiliser une clé de 13mm et une clé dynamométrique, serrer l'écrou à 20Nm.
- Renouveler la procédure pour la protection échappement du côté droit.

ISSUE 1 24/02/2016 (HH)

### **CONSUMER NOTICE**

The catalogue description and any exhibition of samples are only broad indications of the Products and R&G may make design changes which do not diminish their performance or visual appeal and supplying them in such state shall conform to the order. The Buyer acknowledges no representation or warranty (other than as to title) has been given or will apply to the Products other than those in R&G's order or confirmation and the Buyer confirms it has chosen the Products as being of merchantable quality and suitable for its particular purposes. Where R&G fits the Products or undertakes other services it shall exercise reasonable skill and care and rectify any fault free of charge unless the workmanship has been disturbed. The Buyer is responsible for ensuring that the warranty on the motorcycle is not affected by the fitting of the Products. On return of any defective Products R&G shall at its option either supply a replacement or refund the purchase money but shall not be liable if the Products have been modified or used or maintained otherwise than in accordance with R&G's or manufacturer's instructions and good engineering practice or if the defect arises from accident or neglect. Other than identified above and subject to R&G not limiting its liability for causing death and personal injury, it shall not be liable for indirect or consequential loss and otherwise its liability shall be limited to the amounts paid by the Buyer for the Products or the fitting or service concerned. These terms do not affect the Buyer's statutory rights.

### **R&G RACING RETURNS POLICY (NON-FAULTY GOODS)**

Returns must be pre-authorized (if not pre-authorized the return will be rejected). Goods may only be returned direct to us if they were purchased direct from us (customer must prove if necessary). Otherwise to be returned to original vendor. Goods must be in re-sellable condition, in the opinion of R&G Racing. All returns are subject to a 25% restocking and handling fee (25% of the gross value exc. P&P – at the prevailing price at time of purchase). The customer must pay any and all carriage charges. No returns of discontinued products, unless within 14 days of purchase. This policy does not affect your statutory rights and does not refer to faulty goods.

R&G Racing  
Unit 1, Shelley's Lane, East Worldham, Alton, Hampshire, GU34 3AQ  
Tel: +44 (0)1420 89007 Fax: +44 (0)1420 87301 [www.rg-racing.com](http://www.rg-racing.com) Email: [info@rg-racing.com](mailto:info@rg-racing.com)