



FAP0019

FITTING INSTRUCTIONS FOR FAP0019BK
FRONT INDICATOR ADAPTORS
HONDA X-ADV '17-

Page | 1



THIS KIT CONTAINS THE ITEMS PICTURED AND LABELLED BELOW.
DO NOT PROCEED UNTIL YOU ARE SURE ALL PARTS ARE PRESENT.

Please note that the way the kit is packed does not necessarily represent the way of mounting to the bike.

THE PARTS SHOWN MAY BE REPRESENTATIVE ONLY (FOR CLARITY OF INSTRUCTIONS ONLY).

GENERAL TORQUE SETTINGS

M4 BOLT = 8Nm
M5 BOLT = 12Nm
M6 BOLT = 15Nm
M8 BOLT = 20Nm
M10 BOLT = 40Nm

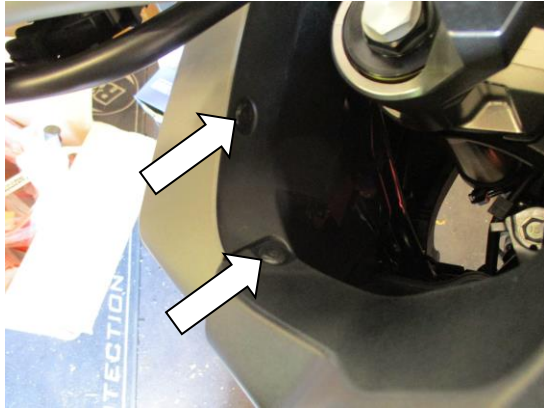
All the above settings are general and the manufacturers setting should be followed unless stated

TOOLS REQUIRED

- 8mm socket and a wrench
- 4 and 5mm Allen keys or socket bits.
 - 12mm spanner.



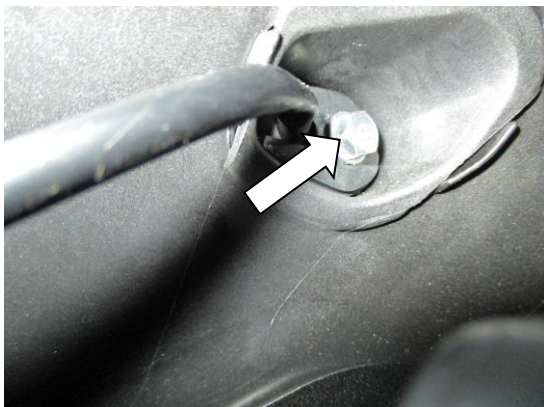
FAP0019



Picture 1



Picture 2



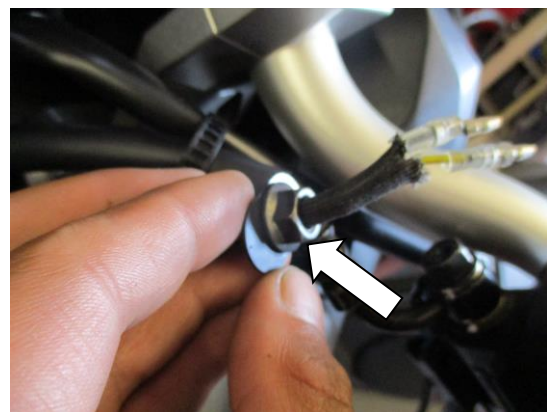
Picture 3



Picture 4



Picture 5



Picture 6

FITTING INSTRUCTIONS

- Starting from the left hand side (as you sit on the bike), remove the three push-in rivets as arrowed in Picture 1 & 2.



FAP0019

Page | 3

- Disconnect the OEM indicator connector.
- Using an 8mm socket and a wrench, remove the bolt that holds the indicator in place as arrowed in picture 3.
- Remove the indicator metal bracket from its rubber stem as shown in picture 4.
- Take the R&G indicator of choice and feed the wires through the two adaptor plates and feed the two adaptor plates onto the indicator stem, ensure that the raised profiles of the adaptor plates are facing each other.
- Offer the indicator assembly onto the LHS indicator hole on the left hand side front panel with the raised profiles of the adaptor plates inserted into the front panel as shown in picture 5.
- Take the indicator nut, feed the wires through and screw the nut into the stem. Ensure that the nut flange sits against the adaptor plate as shown in picture 6.
- Tighten the nut to a maximum of 15Nm.
- In order to get the indicator flash rate to run correctly, an Indicator Resistor (RGR0002) (This is not included in the kit) need to be used, please connect the resistor's female bullet connectors to the indicator's male connectors in this scheme:
 1. Indicator Yellow -----→ Resistor Yellow
 2. Indicator Black -----→ Resistor Black
- From the kit, take indicator connector and connect the female bullet connector to the resistor's male bullet connector in this scheme:
 1. Resistor Yellow -----→ Connector Red
 2. Resistor Black -----→ Connector BlackPlease swap the connectors around if lights fail to illuminate.
- Connect the new male connector to the female connector on the bike as original.
- Re-fit the left hand side infill panel as original and repeat the procedure for the right hand side indicator.
- Please check the operation of indicators before riding the motorcycle

ISSUE 1 23/08/2017 (HH)

Digital copies of these instructions are available to download from www.rg-racing.com

CONSUMER NOTICE

The catalogue description and any exhibition of samples are only broad indications of the Products and R&G may make design changes which do not diminish their performance or visual appeal and supplying them in such state shall conform to the order. The Buyer acknowledges no representation or warranty (other than as to title) has been given or will apply to the Products other than those in R&G's order or confirmation and the Buyer confirms it has chosen the Products as being of merchantable quality and suitable for its particular purposes. Where R&G fits the Products or undertakes other services it shall exercise reasonable skill and care and rectify any fault free of charge unless the workmanship has been disturbed. The Buyer is responsible for ensuring that the warranty on the motorcycle is not affected by the fitting of the Products. On return of any defective Products R&G shall at its option either supply a replacement or refund the purchase money but shall not be liable if the Products have been modified or used or maintained otherwise than in accordance with R&G's or manufacturer's instructions and good engineering practice or if the defect arises from accident or neglect. Other than identified above and subject to R&G not limiting its liability for causing death and personal injury, it shall not be liable for indirect or consequential loss and otherwise its liability shall be limited to the amounts paid by the Buyer for the Products or the fitting or service concerned. These terms do not affect the Buyer's statutory rights.

R&G RACING RETURNS POLICY (NON-FAULTY GOODS)

Returns must be pre-authorized (if not pre-authorized the return will be rejected). Goods may only be returned direct to us if they were purchased direct from us (customer must prove if necessary). Otherwise to be returned to original vendor. Goods must be in re-sellable condition, in the opinion of R&G Racing. All returns are subject to a 25% restocking and handling fee (25% of the gross value exc. P&P – at the prevailing price at time of purchase). The customer must pay any and all carriage charges. No returns of discontinued products, unless within 14 days of purchase. This policy does not affect your statutory rights and does not refer to faulty goods.

R&G Racing

Unit 1, Shelley's Lane, East Worldham, Alton, Hampshire, GU34 3AQ

Tel: +44 (0)1420 89007 Fax: +44 (0)1420 87301 www.rg-racing.com Email: info@rg-racing.com



FAP0019

NOTICE DE MONTAGE POUR FAP0019BK
ADAPTATEURS DE CLIGNOTANT AVANT
HONDA X-ADV '17-

Page | 4



Le kit contient les articles exposés ci-dessous, vérifier que toutes les pièces soient présentes avant de procéder au montage.

La façon dont le kit est emballé ne correspond pas forcément à la façon de monter les pièces sur la moto.

LES PARTIES PRESENTEES PEUVENT ETRE UNIQUEMENT REPRESENTATIVES (POUR LA CLARTE DES INSTRUCTIONS UNIQUEMENT).

VALEURS DE SERRAGE RECOMMANDEES

M4 BOULON = 8Nm
M5 BOULON = 12Nm
M6 BOULON = 15Nm
M8 BOULON = 20Nm
M10 BOULON = 40Nm

Tous les réglages ci-dessus et valeurs d'usine doivent être respectés sauf contre-indication.

OUTILS REQUIS

- Clé à cliquet + douille 8mm
- Clés Allen 4 et 5mm
- Clés à molette 10 & 12mm.



FAP0019

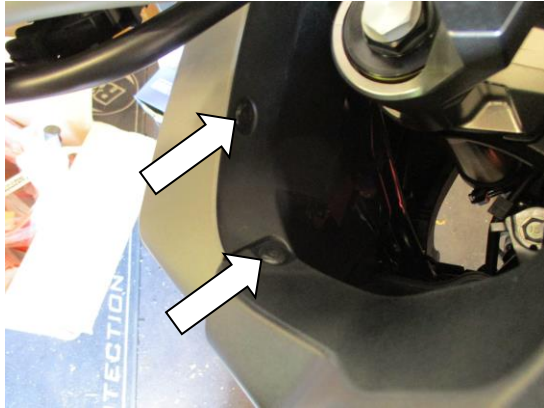


Photo 1



Photo 2

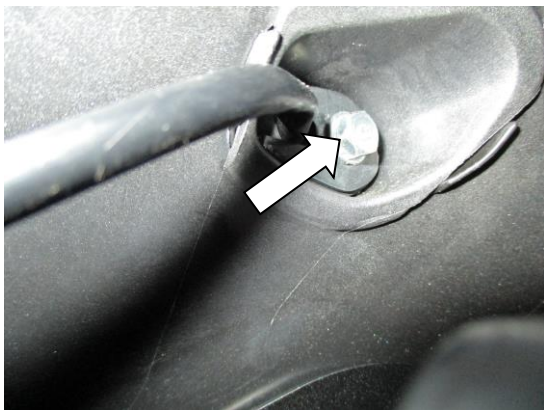


Photo 3



Photo 4



Photo 5

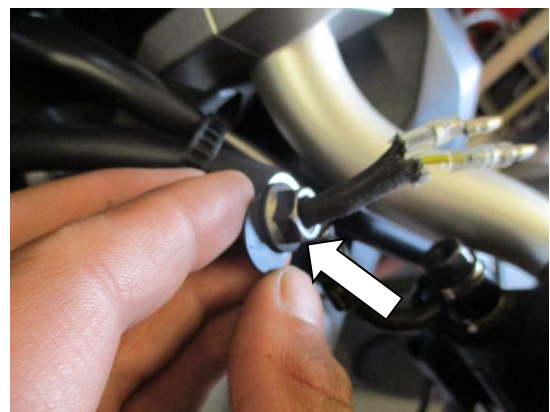


Photo 6



FAP0019

NOTICE DE MONTAGE:

Page | 6

- En partant du côté gauche (lorsqu'on est assis sur la moto), enlever les 3 rivets, voir Photo 1 & 2.
- Déconnecter le connecteur de clignotant d'origine.
- Utiliser une clé à cliquet + douille de 8mm, Enlever le boulon qui fixe le clignotant en place, voir photo 3.
- Enlever le support métallique de clignotant de la tige en caoutchouc, voir photo 4.
- Prendre le clignotant R&G de votre choix et passer les fils dans les 2 plaques d'adaptateur puis passez ces 2 plaques sur la tige de clignotants, en veillant à ce que les profils relevés des plaques d'adaptateur soient en face l'une de l'autre.
- Monter l'assemblage de clignotant sur le trou du clignotant gauche sur le panneau avant du côté gauche avec les profils relevés des plaques d'adaptateur insérés dans le panneau avant, voir photo 5.
- Prendre l'écrou de clignotant, passez les fils dedans et visser l'écrou dans la tige. Veiller à ce que la bride d'écrou se place contre la plaque d'adaptateur, voir photo 6.
- Serrer l'écrou à maximum 15Nm.
- Pour que le niveau d'éclairage du clignotant soit correct, une résistance (RGR0002) (non incluse dans le kit) doit être utilisée, svp connectez les connecteurs femelles de la résistance aux connecteurs mâle de la résistance, selon ce schéma :
 - 3. Clignotant Jaune -----> Résistance Jaune
 - 4. Clignotant Noir -----> Résistance Noire
- Dans le kit, prendre le connecteur de clignotant et connectez le connecteur femelle au connecteur mâle de la résistance, selon ce schéma :
 - 3. Résistance Jaune -----> Connecteur Rouge
 - 4. Résistance Noir -----> Connecteur NoirTournez les connecteurs si l'éclairage échoue.
- Connecter le nouveau connecteur mâle au connecteur femelle sur la moto, comme à l'origine.
- Remonter le panneau interne du côté gauche comme à l'origine, puis répéter la procédure pour le clignotant du côté droit.
- Vérifier que tous les feux fonctionnent avant d'utiliser la moto.

ISSUE 1 23/08/2017 (HH)

Notice disponible au téléchargement sur www.rg-racing.com

CONSUMER NOTICE

The catalogue description and any exhibition of samples are only broad indications of the Products and R&G may make design changes which do not diminish their performance or visual appeal and supplying them in such state shall conform to the order. The Buyer acknowledges no representation or warranty (other than as to title) has been given or will apply to the Products other than those in R&G's order or confirmation and the Buyer confirms it has chosen the Products as being of merchantable quality and suitable for its particular purposes. Where R&G fits the Products or undertakes other services it shall exercise reasonable skill and care and rectify any fault free of charge unless the workmanship has been disturbed. The Buyer is responsible for ensuring that the warranty on the motorcycle is not affected by the fitting of the Products. On return of any defective Products R&G shall at its option either supply a replacement or refund the purchase money but shall not be liable if the Products have been modified or used or maintained otherwise than in accordance with R&G's or manufacturer's instructions and good engineering practice or if the defect arises from accident or neglect. Other than identified above and subject to R&G not limiting its liability for causing death and personal injury, it shall not be liable for indirect or consequential loss and otherwise its liability shall be limited to the amounts paid by the Buyer for the Products or the fitting or service concerned. These terms do not affect the Buyer's statutory rights.

R&G Racing

Unit 1, Shelley's Lane, East Worldham, Alton, Hampshire, GU34 3AQ

Tel: +44 (0)1420 89007 Fax: +44 (0)1420 87301 www.rg-racing.com Email: info@rg-racing.com



FAP0019

R&G RACING RETURNS POLICY (NON-FAULTY GOODS)

Returns must be pre-authorized (if not pre-authorized the return will be rejected). Goods may only be returned direct to us if they were purchased direct from us (customer must prove if necessary). Otherwise to be returned to original vendor. Goods must be in re-sellable condition, in the opinion of R&G Racing. All returns are subject to a 25% restocking and handling fee (25% of the gross value exc. P&P – at the prevailing price at time of purchase). The customer must pay any and all carriage charges. No returns of discontinued products, unless within 14 days of purchase. This policy does not affect your statutory rights and does not refer to faulty goods.